

RESCUE UNIFED SCHOOL DISTRICT

2390 Bass Lake Rd.
Rescue, CA 95672-9608
Phone: (530) 677-4461

Superintendent: Jim Shoemake

SchoolWorks, Inc.

8700 Auburn Folsom Rd, 200
Granite Bay, CA 95746

Phone: 916-733-0402
www.SchoolWorksGIS.com

2022/23 DEMOGRAPHICS AND ENROLLMENT PROJECTIONS

NOVEMBER 2022



DRAFT

TABLE OF CONTENTS

	Page
EXECUTIVE SUMMARY	1
INTRODUCTION.....	3
METHODOLOGY	4
DISTRICT BOUNDARIES.....	6
HISTORIC BIRTH RATES	10
NEW HOUSING DEVELOPMENTS	14
CLASSROOM COUNTS AND CAPACITY	17
SCHOOL PROJECTIONS.....	18
SCHOOL FACILITY UTILIZATION	38

DRAFT

CHARTS

	Page
10 YEAR ENROLLMENT HISTORY AND 6 YEAR ENROLLMENT PROJECTIONS.....	2
TRANSITIONAL KINDERGARTEN PROJECTIONS BASED ON BIRTHS	9
KINDERGARTEN PROJECTIONS BASED ON BIRTHS.....	10
KINDERGARTEN ENROLLMENT TO BIRTH RATIO	11
COHORT CHANGE SINCE KINDERGARTEN	12
HISTORIC ENROLLMENT AND COHORTS	13
NEW DEVELOPMENT PROJECTIONS.....	15
STUDENT YIELD RATE ANALYSIS.....	15
NEW DEVELOPMENT CONSTRUCTION	16
LOADING STANDARDS.....	18
CAPACITY & PROJECTED ENROLLMENT	
GREEN VALLEY ELEMENTARY SCHOOL	20
JACKSON ELEMENTARY SCHOOL.....	22
LAKE FOREST ELEMENTARY SCHOOL.....	24
LAKEVIEW ELEMENTARY SCHOOL.....	26
RESCUE ELEMENTARY SCHOOL.....	28
MARINA VILLAGE MIDDLE SCHOOL	30
PLEASANT GROVE MIDDLE SCHOOL.....	32
INDEPENDENT STUDY	33
STUDENT ATTENDANCE MATRIX.....	33
ELEMENTARY SCHOOLS STUDENT RESIDENTS & ENROLLMENT.....	34
10 YEAR ENROLLMENT HISTORY & 6 YEAR ENROLLMENT PROJECTION.....	35
ENROLLMENT PROJECTION SUMMARY BY GRADE	36
ENROLLMENT PROJECTION SUMMARY BY SCHOOL	36
ENROLLMENT PROJECTIONS	37
SCHOOL FACILITY UTILIZATION	38

DRAFT

MAPS

	Page
DISTRICT MAP WITH STUDENT RESIDENTIAL LOCATIONS	6
SCHOOL LOCATIONS AND ELEMENTARY BOUNDARIES.....	7
MIDDLE SCHOOL BOUNDARIES AND ELEMENTARY FEEDERS	8
NEW HOUSING DEVELOPMENTS	14
SCHOOL BOUNDARY MAPS	
GREEN VALLEY ELEMENTARY SCHOOL	19
JACKSON ELEMENTARY SCHOOL.....	21
LAKE FOREST ELEMENTARY SCHOOL.....	23
LAKEVIEW ELEMENTARY SCHOOL.....	25
RESCUE ELEMENTARY SCHOOL.....	27
MARINA VILLAGE MIDDLE SCHOOL	29
PLEASANT GROVE MIDDLE SCHOOL.....	31
SCHOOL FACILITY UTILIZATION – ELEMENTARY SCHOOLS	39
SCHOOL FACILITY UTILIZATION – MIDDLE SCHOOLS.....	40

DRAFT

Rescue Union School District

2022/23 Demographics and Enrollment Projections

EXECUTIVE SUMMARY

Rescue Union School District consists of five elementary schools and two middle schools. Rescue Union School District has experienced a slightly declining enrollment over the past ten years from an enrollment of 3,768 students during the 2013/14 school year to the current enrollment of 3,483 students. The enrollment numbers in this report do not include Non-Public School (NPS) students.

Rescue Union School District is projected to grow in enrollment by 2.56% (or 89 students) for the 2023/24 school year. The expanding TK program is projected to have an impact of 82 new TK students next year. The District is projected to have a growing enrollment over the next six years, with a projected 3,669 students in the 2028/29 school year. This is a total growth of 186 students, which is an increase of 5.34%. The expanding TK program is projected to have an impact of 191 new TK students over the next six years.

Future impacts from new housing development is predicated upon information provided by local municipalities on the development of 456 housing units over the next six years. If the building rates increase or decrease, then the timeline shown in this Study will need to be modified accordingly. These projected new developments in the District's boundary are expected to generate 20 students next year, or a total of 93 students in the next six years.

Based on current District loading standards and classroom space, the District has a net classroom capacity of 5,156 students, and a current enrollment of 3,483. This gives the District a current utilization factor of 67.6%. The projected utilization factor in six years will be 71.2%. This assumes loading standards remain constant and no additional facilities are built or removed.

This report includes the anticipated growth in the Transitional Kindergarten program to reflect the recent "TK for All" initiative which will allow a phased plan for all 4 year olds to attend TK over the next three years. The projections in this report assume TK will be offered at each elementary site as the numbers will justify classes for each campus.

These projections assume the transfers between schools remain consistent. If changes in facilities, schedules, programs or policies are made, then the patterns may be impacted.

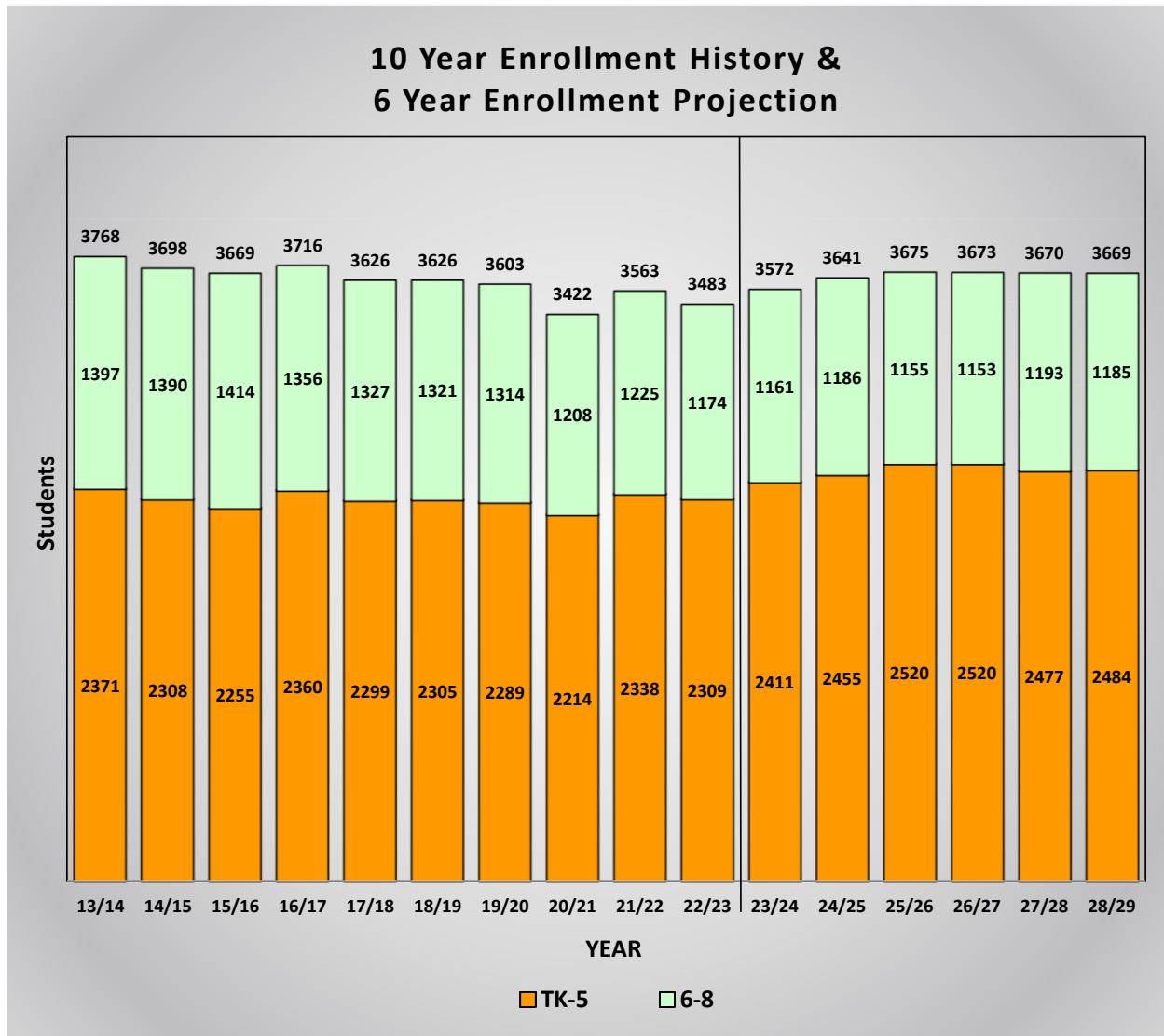
DRAFT

Rescue Union School District

2022/23 Demographics and Enrollment Projections

Ten Year Enrollment History and Six Year Enrollment Projections

This graph shows a summary of the projections for the entire District. It shows the current enrollment for 2022/23, the historic enrollment for the past nine years, and the projected enrollment for the next six years. The end result is a total of 3,669 students in the District in 2028/29. Non-Public School (NPS) students are not included in these enrollment numbers.



Non-Public School (NPS) students are not included in these enrollment numbers.

The Rescue Union School District has declined slightly in enrollment over the past ten years from an enrollment of 3,768 in 2013/14 to the current enrollment of 3,483.

This graph is color coded by grade groupings:

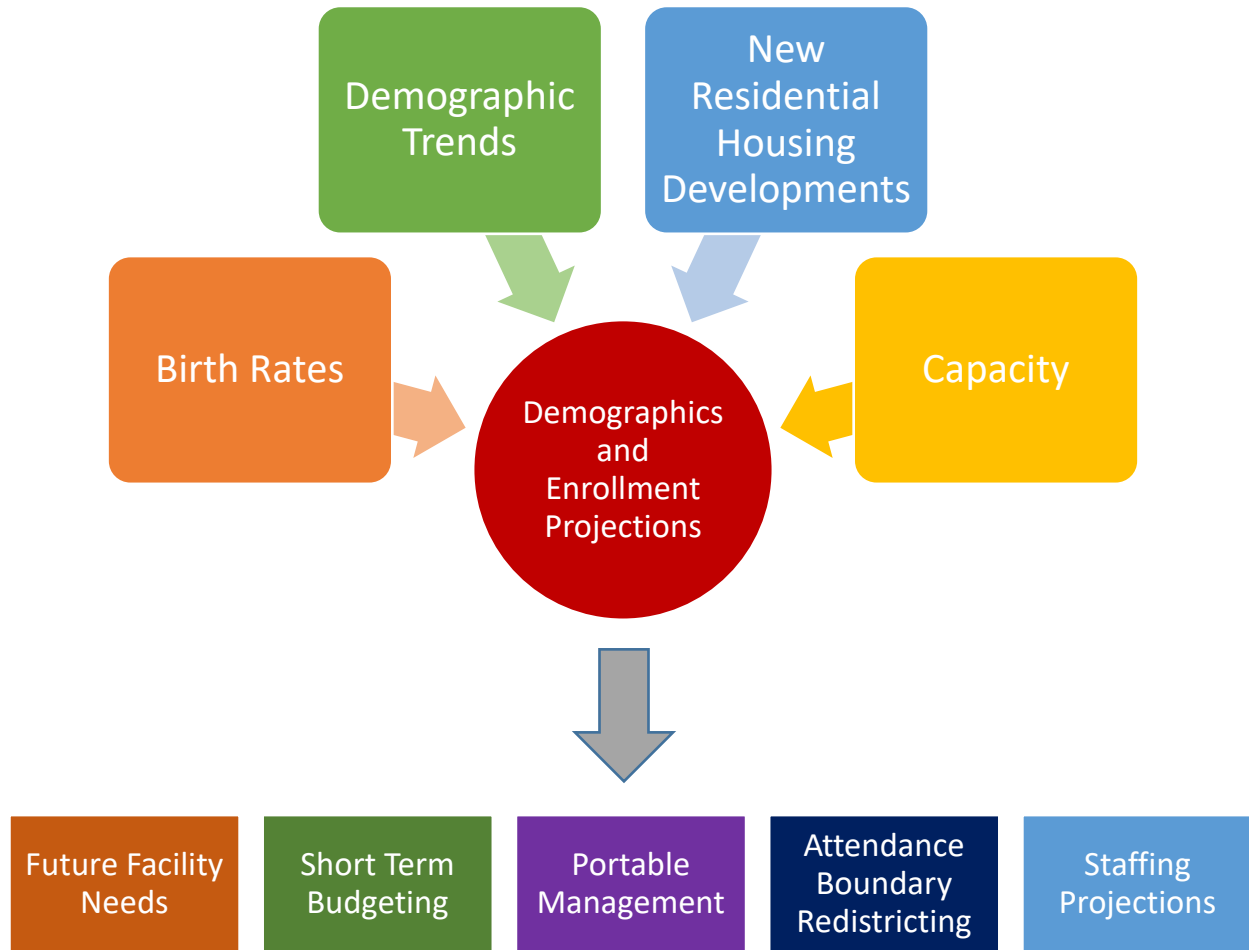
Orange represents the historic and projected enrollment for the elementary school grades TK-5.

Green represents the historic and projected enrollment for the middle school grades 6-8.

The entire District enrollment is shown at the top of each bar.

INTRODUCTION

This Demographics and Enrollment Projections Study provides a comprehensive enrollment analysis for the Rescue Union School District. The district-wide and school-specific enrollment projections are meant to serve as a planning tool to help with both long- and short-term planning. Demographic Studies examine the factors that influence school enrollments, namely trends in demographics, birth rates, and housing development. They are also used as a tool to identify certain facility planning requirements such as capacity, utilization of existing facilities, planning for modernization or new construction, and attendance boundary redistricting.

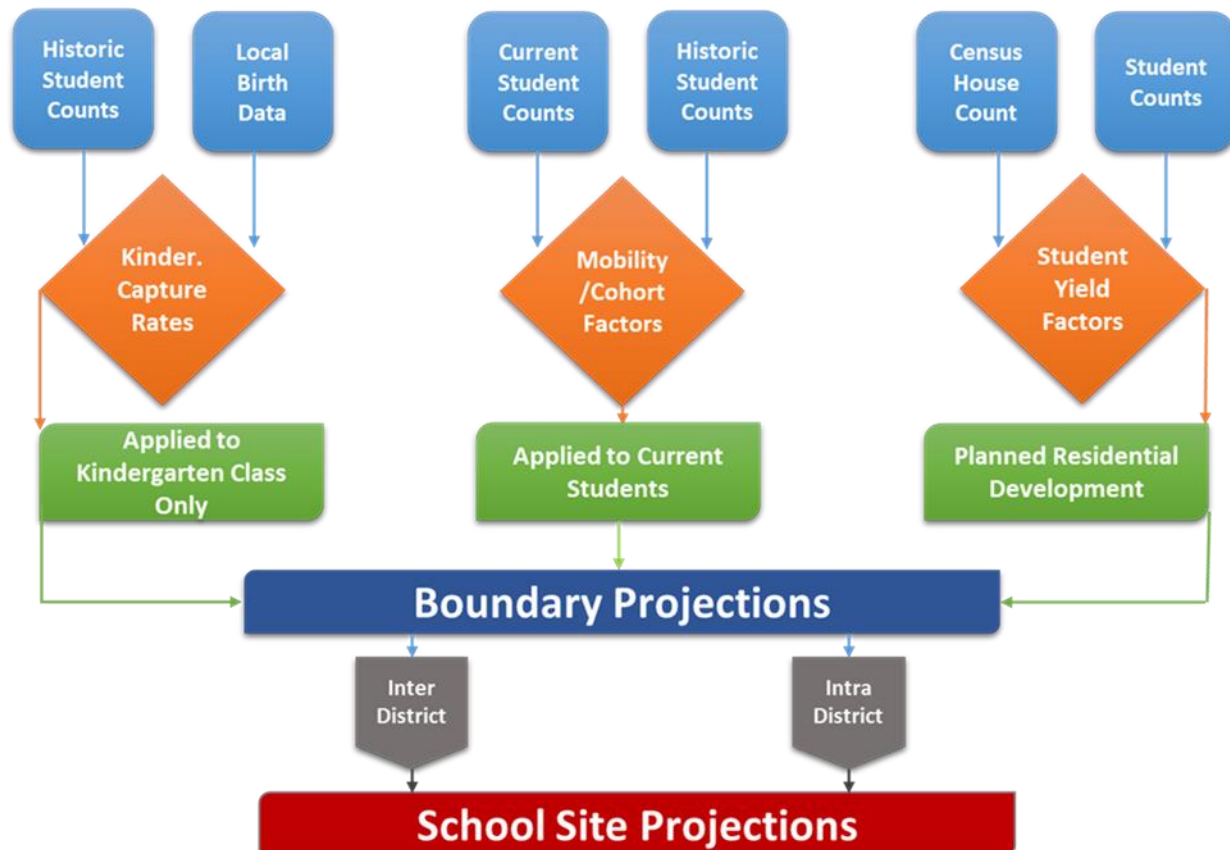


This Study provides information based on the 2022/23 District enrollments and programs, local planning policies and residential development. As these factors change and timelines are adjusted, the Demographic and Enrollment Projections Study should be revised to reflect the most current information.

DRAFT

METHODOLOGY

The chart below summarizes the inputs to calculate the boundary and school site projections.



The **enrollment projections** for each school are generated using a State standard weighted cohort trend analysis. The basic projections are created by studying the individual geographic areas. Once the trends are analyzed for each area, the base projections are modified using the following procedures:

- a) **Birth rates** are used to project future kindergarten and transitional kindergarten enrollment. It is assumed if the births indicate there was an increase of 4% one year, then there will be a corresponding 4% increase in the kindergarten class five years later or the transitional kindergarten class four years later.
- b) **New Housing Development rates** and **yield rates** are compared to the historical impact of development, and if the future projections exceed the historical values, the projections are augmented accordingly.
- c) **Inter-District student** counts are not included in the base geographic trend analysis since these students reside outside of the District. Therefore, the current number of students-per-school and students-per-grade are added to the base projections.

DRAFT

Rescue Union School District

2022/23 Demographics and Enrollment Projections

- d) **Intra-District students** are those who transfer from one school to another. The number of students transferring into and out of each school are calculated and used to determine the difference between the projections for students living in each attendance area versus those that are projected to attend the school.
- e) The projections for **special education students** and **alternative programs** are created by assuming those programs typically serve a percentage of the total District population. Therefore, as the District grows or declines, the enrollment in those programs would increase or decrease accordingly.
- f) **Cohort Trend Analysis:** The number of students living in the boundary are used to generate the cohort factors. The weighted average of the three years was determined with the current year weighted 50%, the prior year 33.3% and the last year 16.7%. This gives the current trends more value in determining the projections. Those cohorts are then used to determine the students who will be residing in each attendance area for the following years.

Neighborhood School Attendance Area Analysis: Each school attendance boundary is input into our GIS (Geographic Information Systems) Software. Students are counted in each of the attendance area boundaries based on their residential address and can be studied to view optimum and balanced utilizations. Attendance pattern maps for each individual boundary will analyze impacts of intra-district transfers from within the district boundary, as well as inter-district transfers from neighboring school districts.

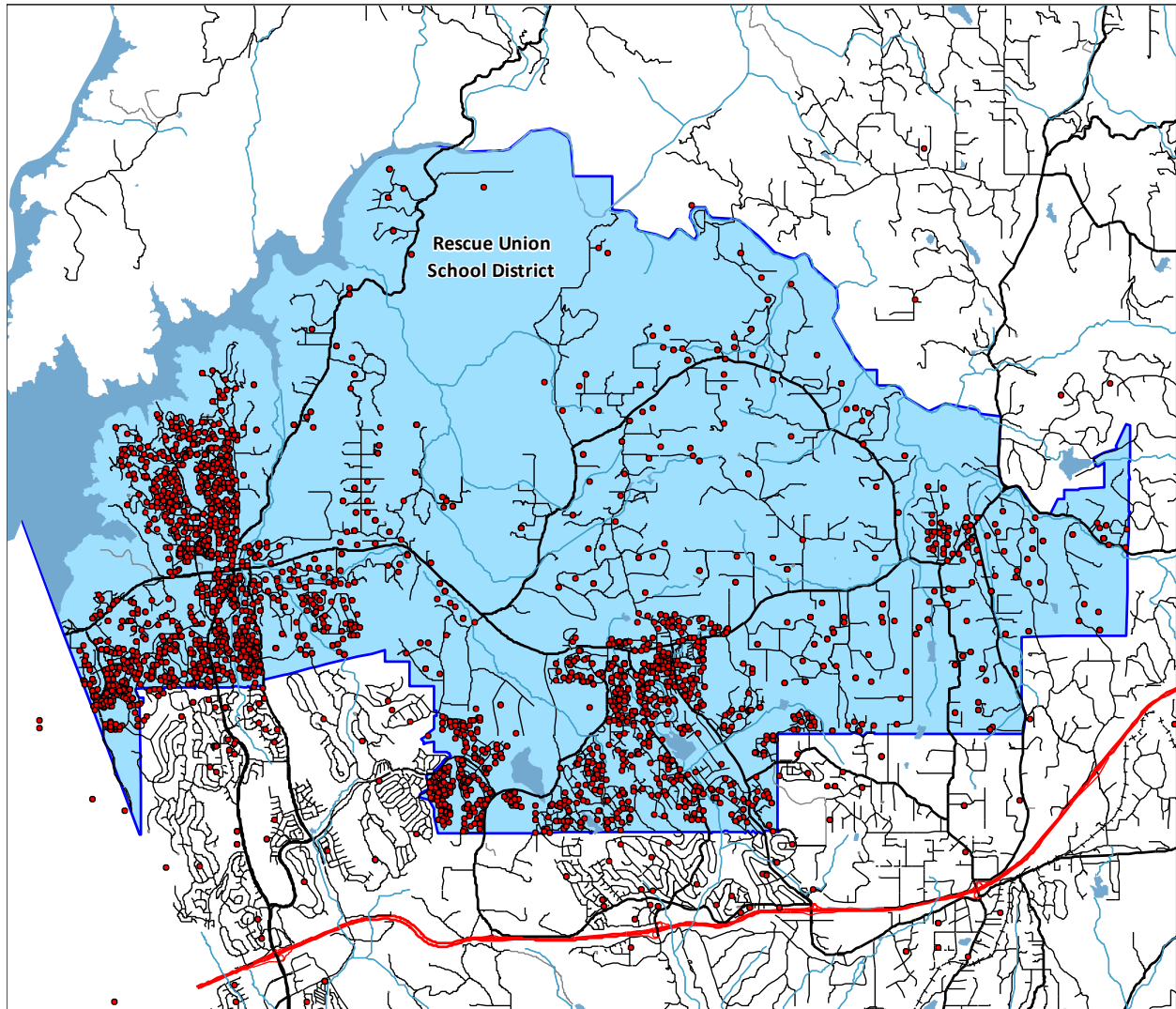
“TK for All” Initiative: This report models the growth projected for Transitional Kindergarten in alignment with the recent “TK for All” initiative which follows a phased plan to allow all 4 year olds to attend TK by 2025/26. This includes the assumption that TK will be offered at all sites that currently house K students. The expansion for TK enrollment is based on the following schedule:

- 2023/24 – 7 months (Adds 2 months)
- 2024/25 – 9 months (Adds 2 months)
- 2025/26 – 12 months (Adds 3 months)

DRAFT

DISTRICT BOUNDARIES

District Map with Student Residential Locations

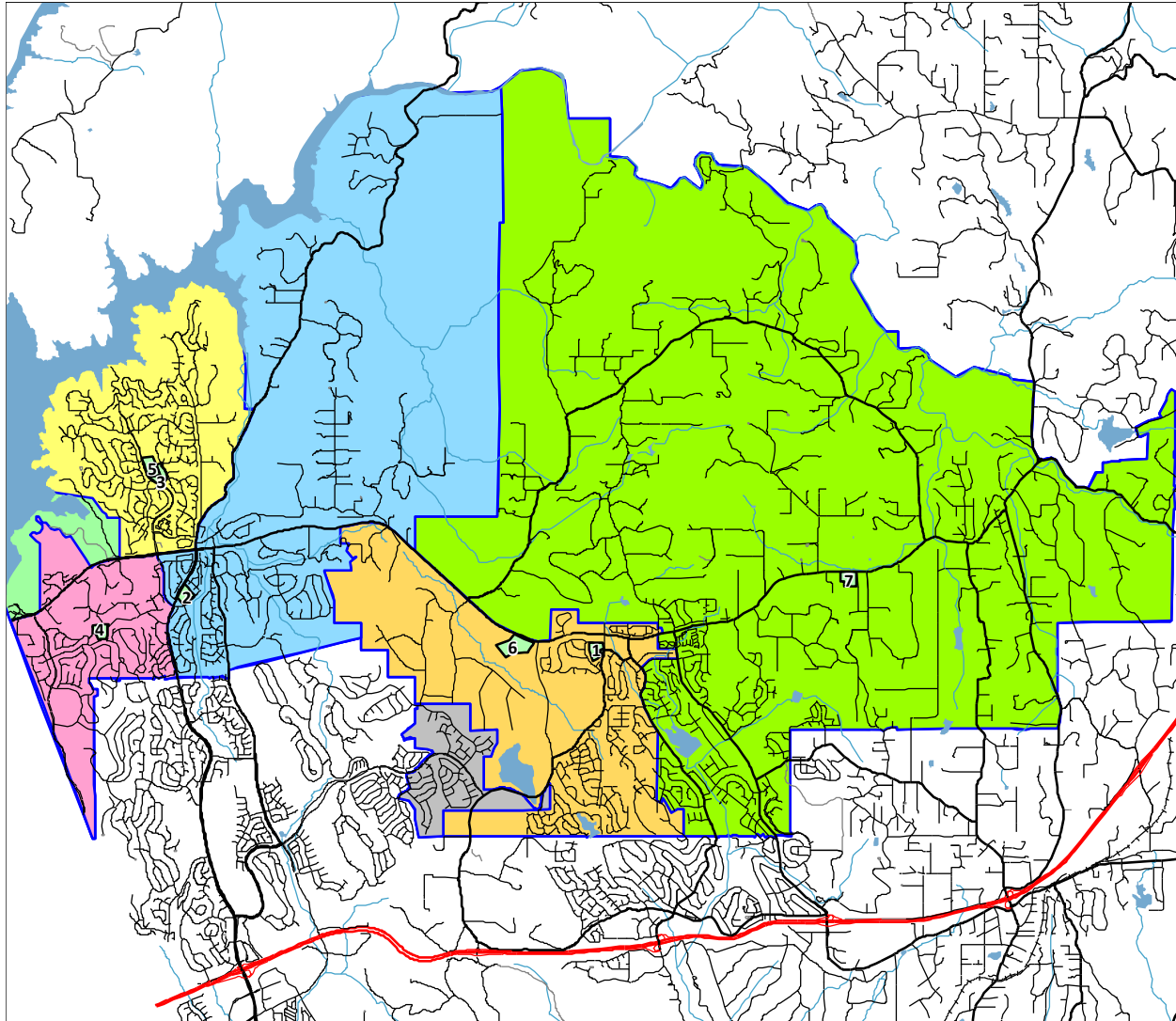


This map shows the District boundary along with the location of each student based on their residential address. This geographic data is the foundation for our demographic analysis. Any red dots outside the District boundary will represent students attending one of the District schools or programs but have a residence outside the District. This map also identifies different areas of student population density.

DRAFT

Rescue Union School District
2022/23 Demographics and Enrollment Projections

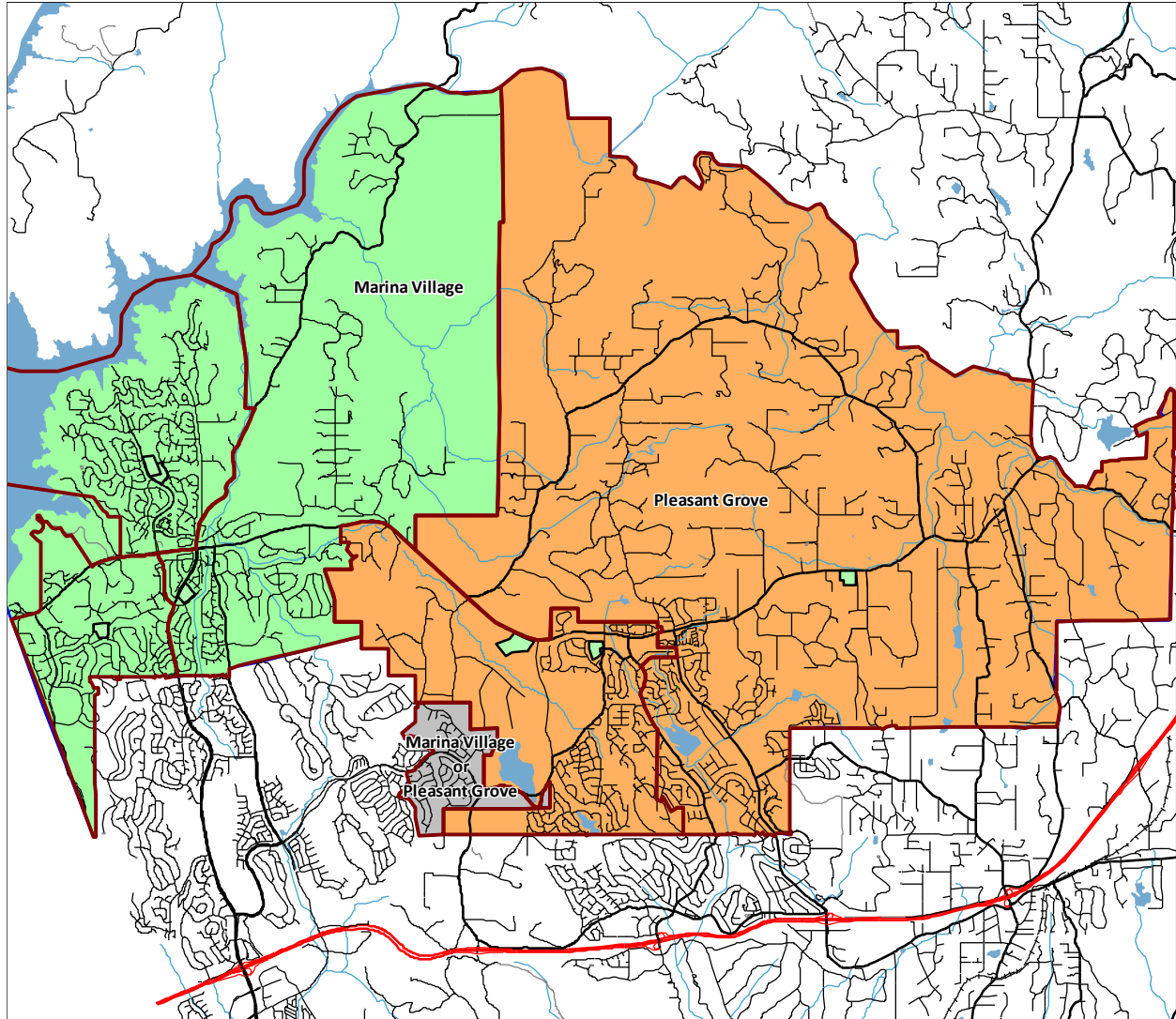
School Locations and Elementary Boundaries



<u>Id</u>	<u>School</u>	<u>Grades</u>	<u>Id</u>	<u>School</u>	<u>Grades</u>
1	Green Valley Elementary	TK-5	5	Marina Village Middle	6-8
2	Jackson Elementary	TK-5	6	Pleasant Grove Middle	6-8
3	Lake Forest Elementary	TK-5	7	Rescue Elementary	TK-5
4	Lakeview Elementary	TK-5			

DRAFT

Middle School Boundaries and Elementary Feeders



Middle School
Marina Village

Elementary Feeders
Jackson
Lake Forest
Lakeview

Middle School
Pleasant Grove

Elementary Feeders
Green Valley
Rescue

DRAFT

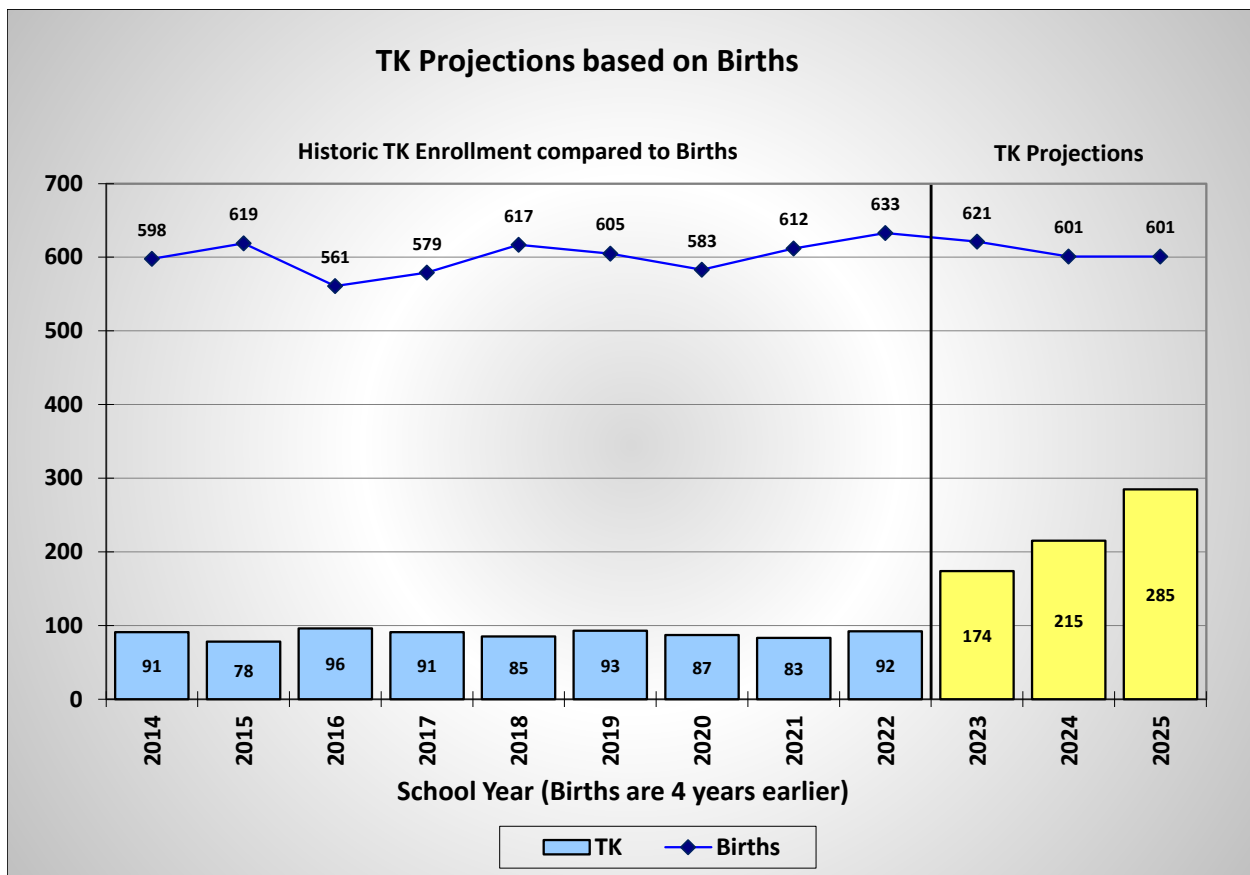
Rescue Union School District

2022/23 Demographics and Enrollment Projections

Transitional Kindergarten

The Transitional Kindergarten (TK) program started in 2012 to provide an extra year for young children to get ready for kindergarten. Currently, the TK program allows four year-olds who will turn five between September 1 and February 2. Some districts allow parents with children just outside that window to also participate in the program. Since the window for the TK program is only five months, participation in the TK program is typically less than 40% of the total kindergarten enrollment. In most current state processes, such as CalPADS reporting, the State Building Program, and ADA, TK students are included with the kindergarten numbers.

As mentioned under "Methodology", this report addresses the growth of the TK program over the next three years to a full grade.

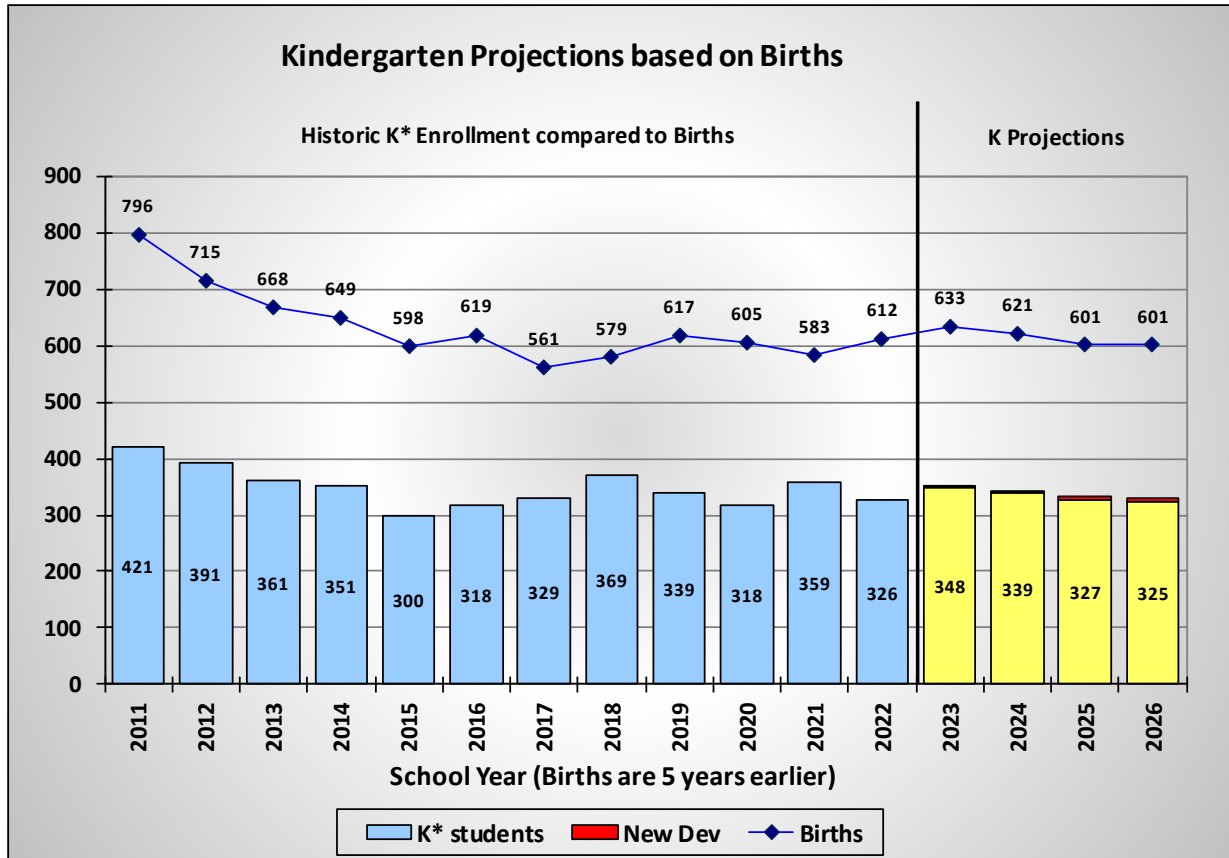


The TK projection for 2025/26 shows a total of 285 students and would be a full grade at that point.

DRAFT

HISTORIC BIRTH RATES

The following section is an analysis of the number of births in the Rescue Union School District. The number of births are compiled by zip code regions and provided by the Department of Health. The zip code areas do not exactly match the District boundaries and therefore the zip codes 95672, 95762, and 95682, which are in the District, were used for this analysis.

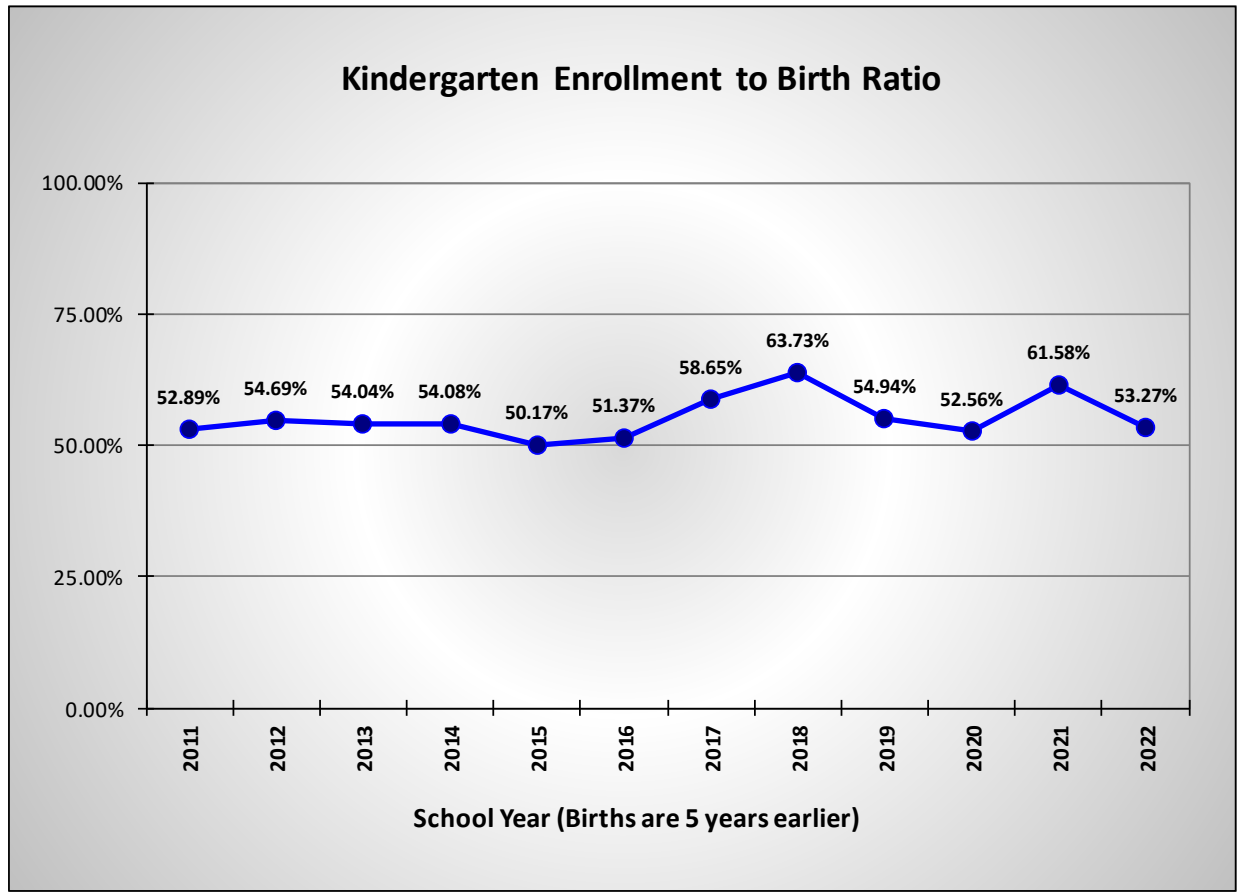


*Kindergarten Totals may include some Transitional Kindergarten students for some of the past years to more accurately correlate a 12-month period of births to a 12-month period of enrollment.

The above figure illustrates the correlation between births in the District area and the number of kindergarten students attending Rescue Union schools five years later. The number of births between 2006 and 2017 has averaged about 634 per year. The recent birth rates over the past four years (2018 to 2021), which will generate the kindergarten classes for the next four years (2023 to 2026), have been between 601 and 633. We have assumed that the average kindergarten capture rate of 55.16% will be maintained in the future.

DRAFT

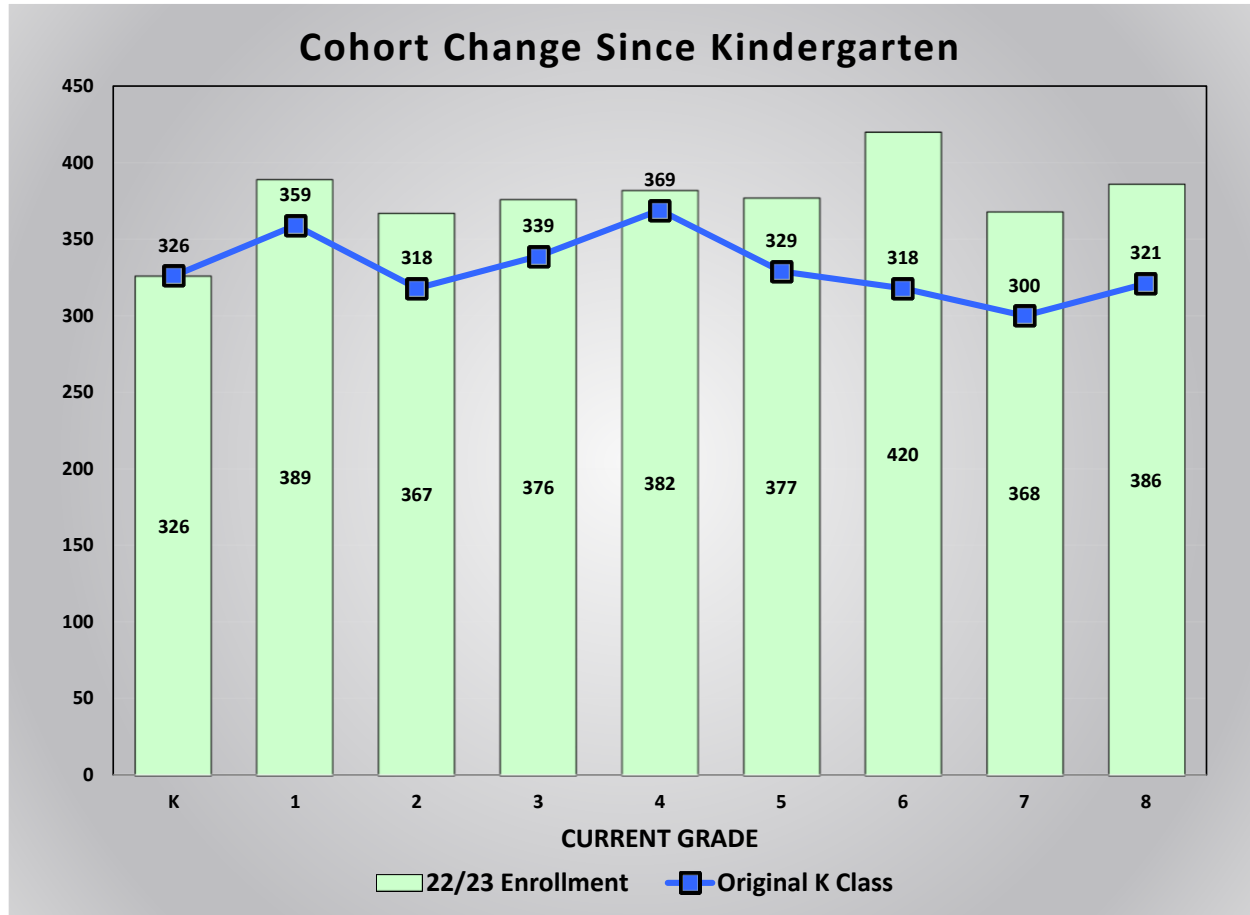
Historic Kindergarten Capture Rates



This figure shows the kindergarten capture rates for the past 12 years. Since the birth data is derived from zip code areas, which do not exactly match with the District boundaries, the capture rate also accounts for differences in the coverage areas. Low capture rates are common when a district serves only a portion of a large zip code area. A large capture rate is possible when families move into the area after the children were born, but before they arrived for kindergarten. Overall, the District has had a stable capture rate with a 12 year average of 55.16%.

DRAFT

Retention Rates Since Kindergarten



This chart compares the original kindergarten class size to the current enrollment for each grade. For example, the current 6th grade class has 420 students and six years ago the kindergarten class had 318 students. Overall the class sizes have increased since kindergarten.

DRAFT

Rescue Union School District

2022/23 Demographics and Enrollment Projections

Historic Enrollment and Trends

Rescue Union School District Historic Enrollment and Cohorts								
Grade	CalPADS Enrollment				Historic Cohorts			Weighted Average
	19/20	20/21	21/22	22/23	19 to 20	20 to 21	21 to 22	
T K	93	87	83	92	-6	-4	9	2.2
K	339	318	359	326	-21	41	-33	-6.3
1	374	330	356	389	-9	38	30	26.2
2	355	367	371	367	-7	41	11	18.0
3	370	351	373	376	-4	6	5	3.8
4	371	381	381	382	11	30	9	16.3
5	387	380	415	377	9	34	-4	10.8
6	401	379	378	420	-8	-2	5	0.5
7	453	400	408	368	-1	29	-10	4.5
8	460	429	439	386	-24	39	-22	-2.0
Totals	3,603	3,422	3,563	3,483	-6.0	25.2	0.0	7.4
Annual Change:		-181	141	-80				

This chart shows the enrollment by grade level over the past four years. The cohort values were calculated for each grade and each year, along with the weighted average for each grade. A positive cohort value indicates that grade is expected to have more students than the previous grade last year. A negative value would mean that the grade has fewer students compared to the previous grade last year.

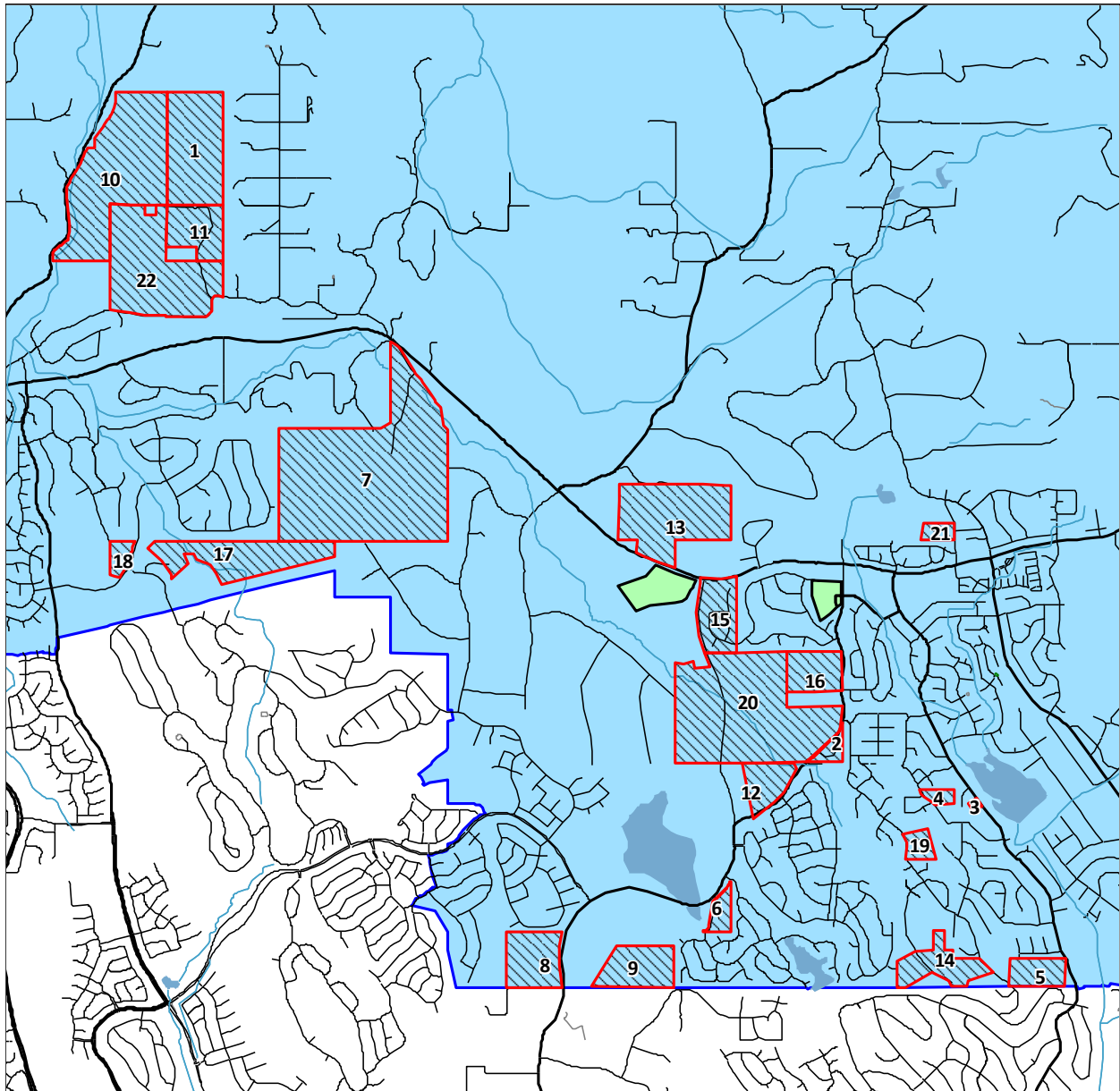
In general, a positive cohort is representative of growth and a negative cohort indicates a decline in enrollment. There are some exceptions. First grade usually has a positive cohort, as there are some students that do not attend kindergarten at public schools but arrive in first grade.

Another important item to notice is the current breakdown by grade level of the student population. Comparing the number of students in the lower grades to the upper grades can indicate potential increases or decreases in future enrollments. Also, if there is a large class or a small class, it will slowly cause a ripple in the enrollments as it advances a grade each year.

Finally, the annual change at the bottom of this chart indicates the net impact of the changes in enrollment over the past few years.

DRAFT

NEW HOUSING DEVELOPMENTS



This close up view of the District shows the location of the projected new development areas.

Two years of building permits were geocoded by address or APN to show the locations of active new developments.

DRAFT

Rescue Union School District

2022/23 Demographics and Enrollment Projections

The projections used in this report are based on the following number of units projected from these developments:

ID	Name	Remaining	Six Year	Boundary	
		Units	Projection	Elementary	Middle
1	Alto LLC	23	0	Jackson	Marina Village
2	Bass Lake Estates	36	12	Green Valley	Pleasant Grove
3	Cambridge Road Townhomes	12	12	Rescue	Pleasant Grove
4	Cameron Heights	25	25	Green Valley	Pleasant Grove
5	Cameron Hills	41	0	Rescue	Pleasant Grove
6	Edgelake at Serrano	45	45	Lakeview	Marina Village
7	Generations at Green Valley	379	72	Green Valley	Pleasant Grove
8	Hawk View at Bass Lake Hills	13	13	Green Valley	Pleasant Grove
9	Hidden Ridge	90	90	Green Valley	Pleasant Grove
10	La Canada	47	0	Jackson	Marina Village
11	Malcolm Dixon Road Estates	7	0	Jackson	Marina Village
12	Oak View Estates	24	0	Green Valley	Pleasant Grove
13	Oakhaven	29	29	Rescue	Pleasant Grove
14	Rancho Tierra	83	40	Green Valley	Pleasant Grove
15	Revere Silver Springs	28	28	Green Valley	Pleasant Grove
16	Richland	84	40	Green Valley	Pleasant Grove
17	Serrano Village M2	48	0	Jackson	Marina Village
18	Serrano Village M5	10	0	Jackson	Marina Village
19	Sierra Sunrise	28	20	Green Valley	Pleasant Grove
20	Silver Springs	181	0	Green Valley	Pleasant Grove
21	Starbuck Ranch	49	0	Rescue	Pleasant Grove
22	Vineyards at El Dorado Hills	42	30	Jackson	Marina Village
Totals		1,324	456		

Assuming that 456 of the 1,324 planned units are completed over a six year period, there would be an average of 76 new housing units per year. To determine the impact of the new housing development, each new housing unit is multiplied by the student yield rate. Currently the District student yield rate is 0.271 students per housing unit based on the 2020 Census data. For purposes of the projections, we assumed that newly constructed homes with only get 75% of the Census yield rate. This breaks down as follows:

Grade	2020 Students in District	2020 Housing Units	Census Student Yield Rate	New Home Student Yield Rate
Total TK-5	2,214	12,623	0.175	0.132
Total 6-8	1,208	12,623	0.096	0.072
Total	3,422		0.271	0.203

Based on 2020 Census Data for school district.

The yield rate used for new construction eligibility determination in the State building program is 0.50 students per home for K-8 districts. The yield rate in the Rescue Union School District is lower than the State average.

DRAFT

Rescue Union School District

2022/23 Demographics and Enrollment Projections

Rescue Union School District New Development Construction Housing Units per Year							
School	23/24	24/25	25/26	26/27	27/28	28/29	Totals
	<u>Year 1</u>	<u>Year 2</u>	<u>Year 3</u>	<u>Year 4</u>	<u>Year 5</u>	<u>Year 6</u>	
Green Valley Elem	67	30	30	36	82	95	340
Jackson Elem	0	0	0	10	10	10	30
Lake Forest Elem	0	0	0	0	0	0	0
Lakeview Elem	30	15	0	0	0	0	45
Rescue Elem	0	26	15	0	0	0	41
Elementary Totals	97	71	45	46	92	105	456
Marina Village Middle	30	15	0	10	10	10	75
Pleasant Grove Middle	67	56	45	36	82	95	381
Middle Totals	97	71	45	46	92	105	456

Based on these estimated construction rates, the development will generate 20 students next year and a total of 93 students in the next six years.

DRAFT

Rescue Union School District

2022/23 Demographics and Enrollment Projections

CLASSROOM COUNTS AND CAPACITY

It is important to understand that capacity and classroom counts may be viewed different ways for different purposes. The State School Facilities Program (SFP) considers all available teaching stations excluding physical education facilities and core facilities (e.g., libraries, multipurpose rooms, and administrative spaces), as part of the site capacity when calculating eligibility for new construction or modernization funding. The State also has its own loading standards per classroom as part of the eligibility determinations.

Another method for calculating capacity and number of classrooms is based on local District standards of class size and a definition of what is considered a full day teaching station. The District may set aside several classroom spaces defined by the SFP for specialized programs or pull-out spaces.

The classroom counts and capacities defined in this Demographics and Enrollment Projections Study represent the rooms that have been identified by Rescue Union School District administration as designated fulltime teaching stations. This count is a net count and may not take into consideration other rooms which could be used as fulltime teaching stations but are needed for other programs offered by the District.

The classroom counts are shown for each school and are used to determine the capacity. The classroom counts represent the rooms that can be used for teaching purposes at each school site. The classroom counts may not represent the current classrooms being used, as there may be unused rooms on the school site. In some cases, there may be fewer classrooms counted than current teaching stations if some of the rooms being used were designed for other purposes but are currently being used as classrooms due to overcrowding.

The summary below illustrates the difference between the Gross classroom count and the Net classroom count.

Rescue Union School District Classroom Count Summary

<u>Elementary Schools</u>	<u>Gross CR Count</u>	<u>Net CR Count</u>	<u>Excluded CR</u>	<u>Notes</u>
Green Valley Elem	31	27	4	19 Portables
Jackson Elem	30	26	4	13 Portables
Lake Forest Elem	28	24	4	18 Portables
Lakeview Elem	30	24	6	0 Portables
Rescue Elem	35	26	9	22 Portables
Sub-Totals	154	127	27	
 <u>Middle Schools</u>				
Marina Village Middle	32	32	0	6 Portables
Pleasant Grove Middle	31	31	0	0 Portables
Sub-Totals	63	63	0	
 District Totals	 217	 190	 27	

DRAFT

SCHOOL PROJECTIONS

This Study provides a detailed analysis of student attendance patterns and enrollment for each school. This includes a boundary map illustrating that particular school’s attendance patterns along with a chart showing the projected enrollment for the next six years. These charts indicate the actual enrollment at each school over the past four years along with the projected enrollment for the next six years. In addition, the number of students living in the boundary are shown for the same time period. If there are more students attending than live in the area, then there is a net inflow. If more students live in the boundary than attend the school, then there is a net outflow.

The current capacity is shown on these charts to identify if there will be classroom space available for the students. If space is not available, then the attendance patterns will likely need to change if the additional facilities are not provided. The capacity for each school was determined by using the following loading standards for each classroom identified:

<u>Grade</u>	<u>Loading Standard</u>
TK-3	24
4-5	30
6-8	31

These loading standards are based on the current loading factors used this year and may change based on the level of funding for schools in the future.

Detailed data is provided below each projection chart that shows the calculations of the cohort factors used to determine the enrollment projections for each school.

The number of students living in the boundary are shown, which are then used to generate the cohort factors. The weighted average of the three years was determined with the current year weighted 50%, the prior year 33.3% and the last year 16.7%. This gives the current trends more value in determining the projections. Those cohorts are then used to determine the students who will be residing in each attendance area for the following years. The kindergarten and transitional kindergarten enrollment is projected using the birth data instead of a cohort factor.

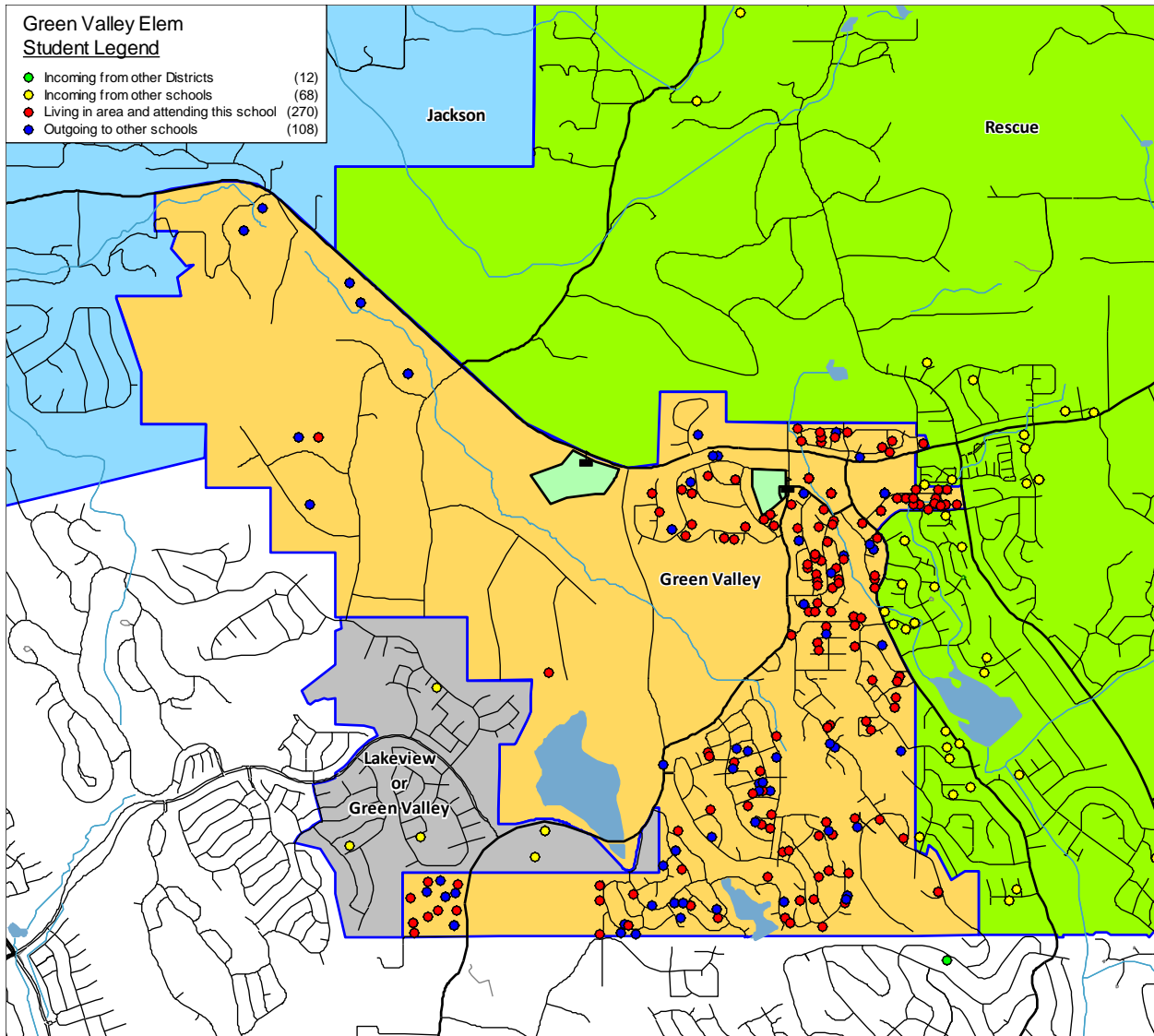
The Attendance Factors were determined by analyzing the current year of students to see how many Inter- and Intra-District transfers there are. Once the baseline projections are calculated for the residents in the attendance area, the Intra-District and Inter-District factors are applied to determine the projected enrollment for each school.

The last three columns in the chart, Current Enrollment, 23/24 Projection, and Net Change, show the current enrollment, next year’s projection and net change in enrollment for next year. These are compared by grade to show the details needed for staffing and classroom needs.

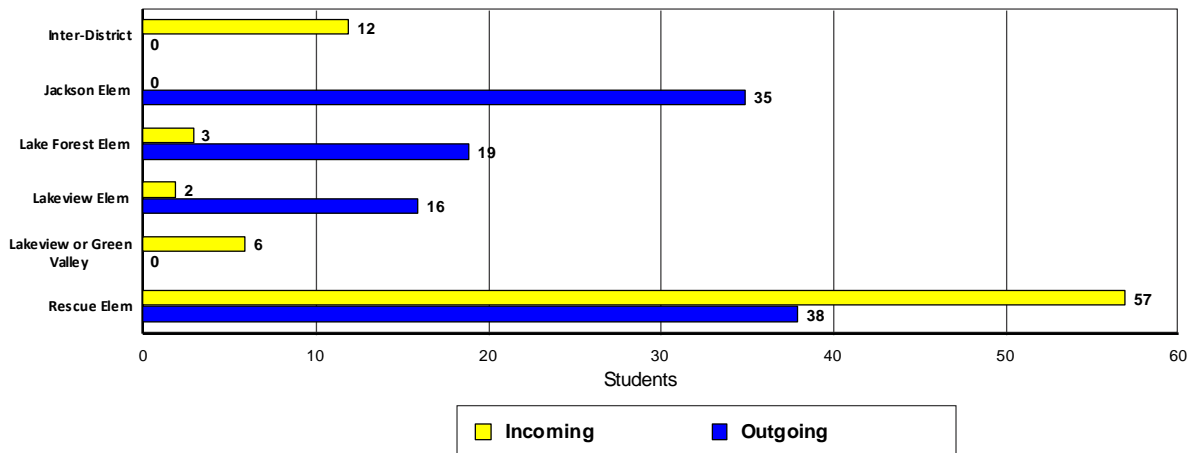
DRAFT

Rescue Union School District

2022/23 Demographics and Enrollment Projections



Green Valley Elem
Transfer Students

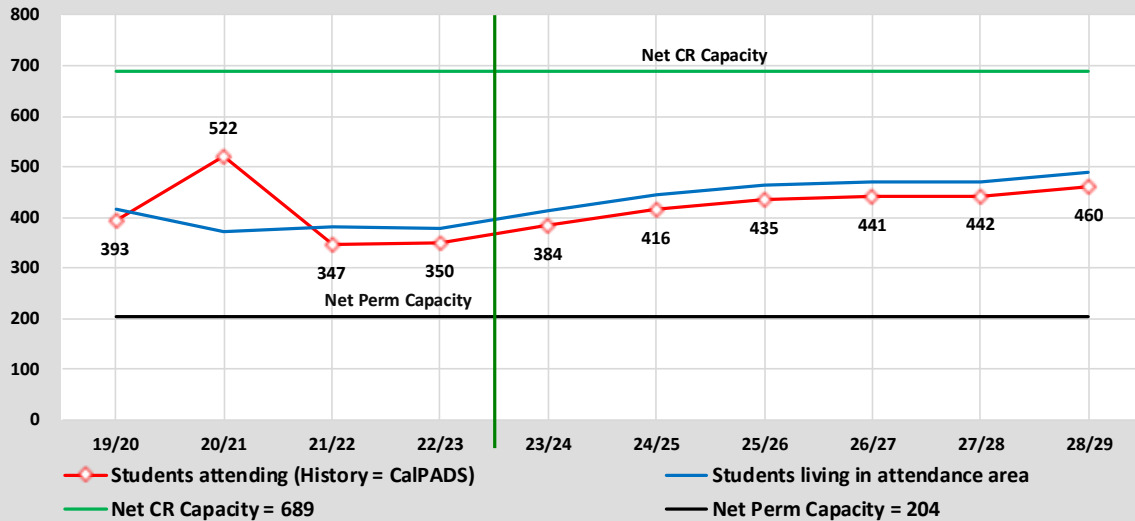


DRAFT

Rescue Union School District

2022/23 Demographics and Enrollment Projections

Capacity & Projected Enrollment Green Valley Elem



District Loading Standards
 Traditional School
 All Portables Loaded
 Net Classroom Count = 8 plus 19 portables
 Grades Served = TK - 5

Classroom Needs Timeline

Year	Total Students*	Annual Change	Spec. Ed. Students	Net CR Capacity	Unhoused Students	Annual CR Needed	Total CR's Needed	Available Seats	Projected Housing Units
22/23	350	3	0	204	146	6	6	0	
23/24	384	34	0	204	180	1	7	0	67
24/25	416	32	0	204	212	1	8	0	30
25/26	435	19	0	204	231	1	9	0	30
26/27	441	6	0	204	237	1	10	0	36
27/28	442	1	0	204	238	0	10	0	82
28/29	460	18	0	204	256	0	10	0	95

* Based on Students Attending (Squares on Graph)
 Net Classroom Count = 8

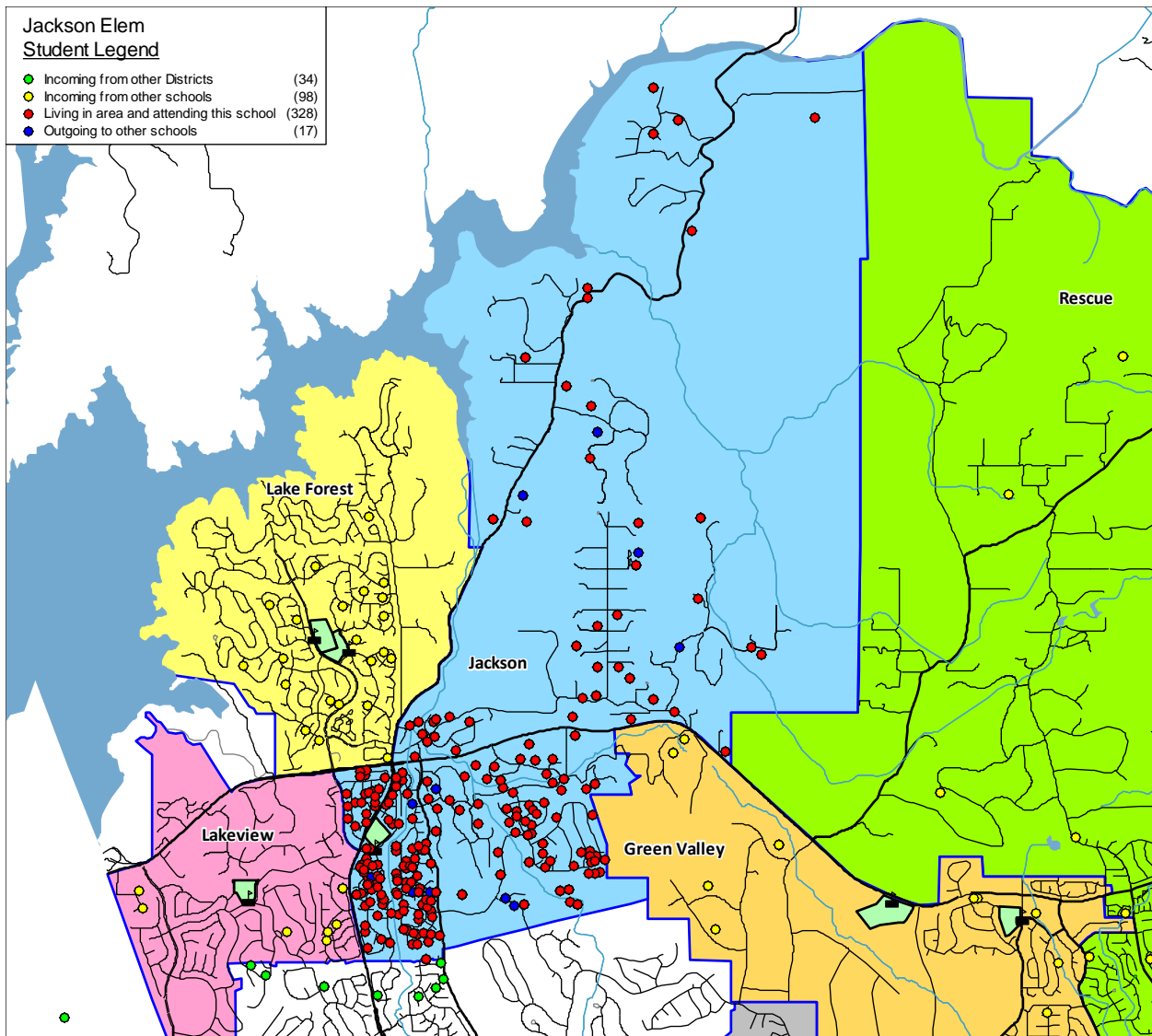
Green Valley Elem

YEAR:	Students in boundary				Historic Cohorts			Weighted Average	Attendance Factors		Current Enrollment	23/24 Projection	Net Change
	19/20	20/21	21/22	22/23	19 to 20	20 to 21	21 to 22		Intra	Inter			
Grade													
T K	23	16	15	15	-7	-1	0	0	0.0%	6.7%	17	35	18
K	64	61	68	57	-3	7	-11	0	-17.5%	1.8%	48	57	9
1	57	62	61	75	-2	0	7	3	-14.7%	0.0%	64	51	-13
2	63	51	65	68	-6	3	7	2	-13.2%	1.5%	60	71	11
3	63	56	44	61	-7	-7	-4	-6	-16.4%	3.3%	53	55	2
4	67	61	62	45	-2	6	1	1	6.7%	4.4%	50	68	18
5	78	66	68	57	-1	7	-5	0	-7.0%	8.8%	58	47	-11
Totals	415	373	383	378	-4.0	2.1	-0.7	0.0	-8.9%	3.8%	350	384	34

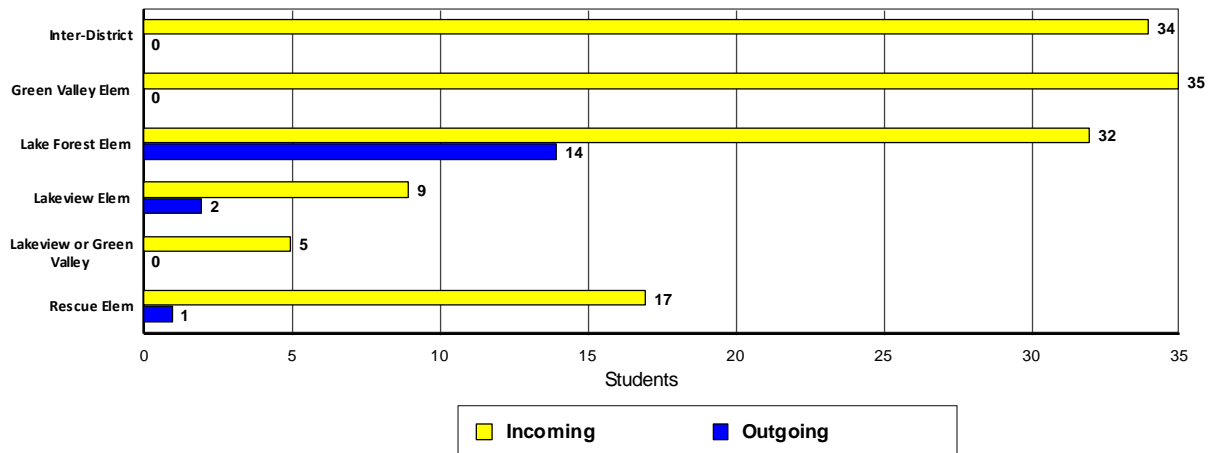
DRAFT

Rescue Union School District

2022/23 Demographics and Enrollment Projections



Jackson Elem
Transfer Students

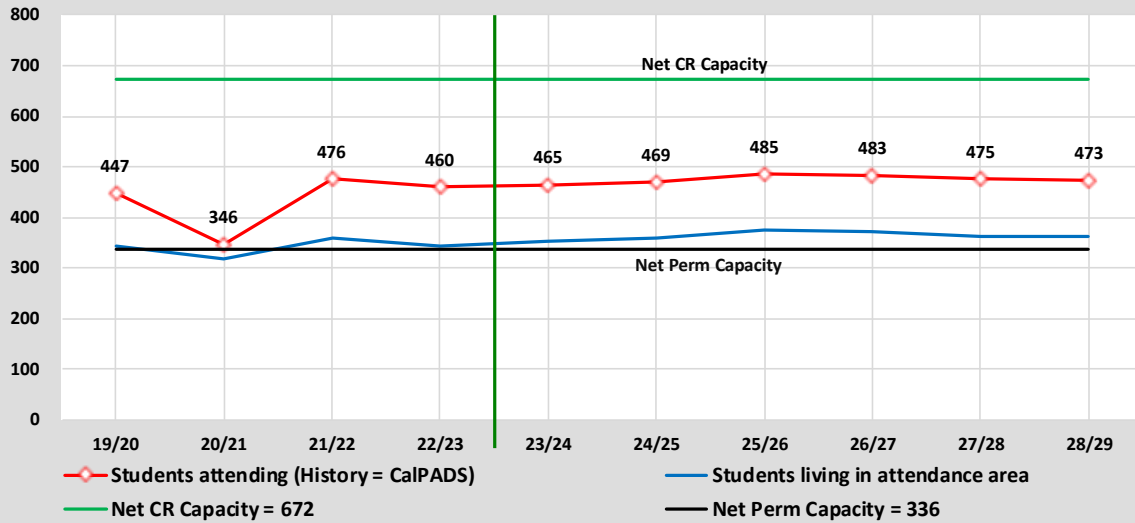


DRAFT

Rescue Union School District

2022/23 Demographics and Enrollment Projections

Capacity & Projected Enrollment Jackson Elem



District Loading Standards
 Traditional School
 All Portables Loaded
 Net Classroom Count = 13 plus 13 portables
 Grades Served = TK - 5

Classroom Needs Timeline

Year	Total Students*	Annual Change	Spec. Ed. Students	Net CR Capacity	Unhoused Students	Annual CR Needed	Total CR's Needed	Available Seats	Projected Housing Units
22/23	460	-16	0	336	124	5	5	0	
23/24	465	5	0	336	129	0	5	0	0
24/25	469	4	0	336	133	0	5	0	0
25/26	485	16	0	336	149	1	6	0	0
26/27	483	-2	0	336	147	0	6	0	10
27/28	475	-8	0	336	139	0	6	0	10
28/29	473	-2	0	336	137	0	6	0	10

* Based on Students Attending (Squares on Graph)
 Net Classroom Count = 13

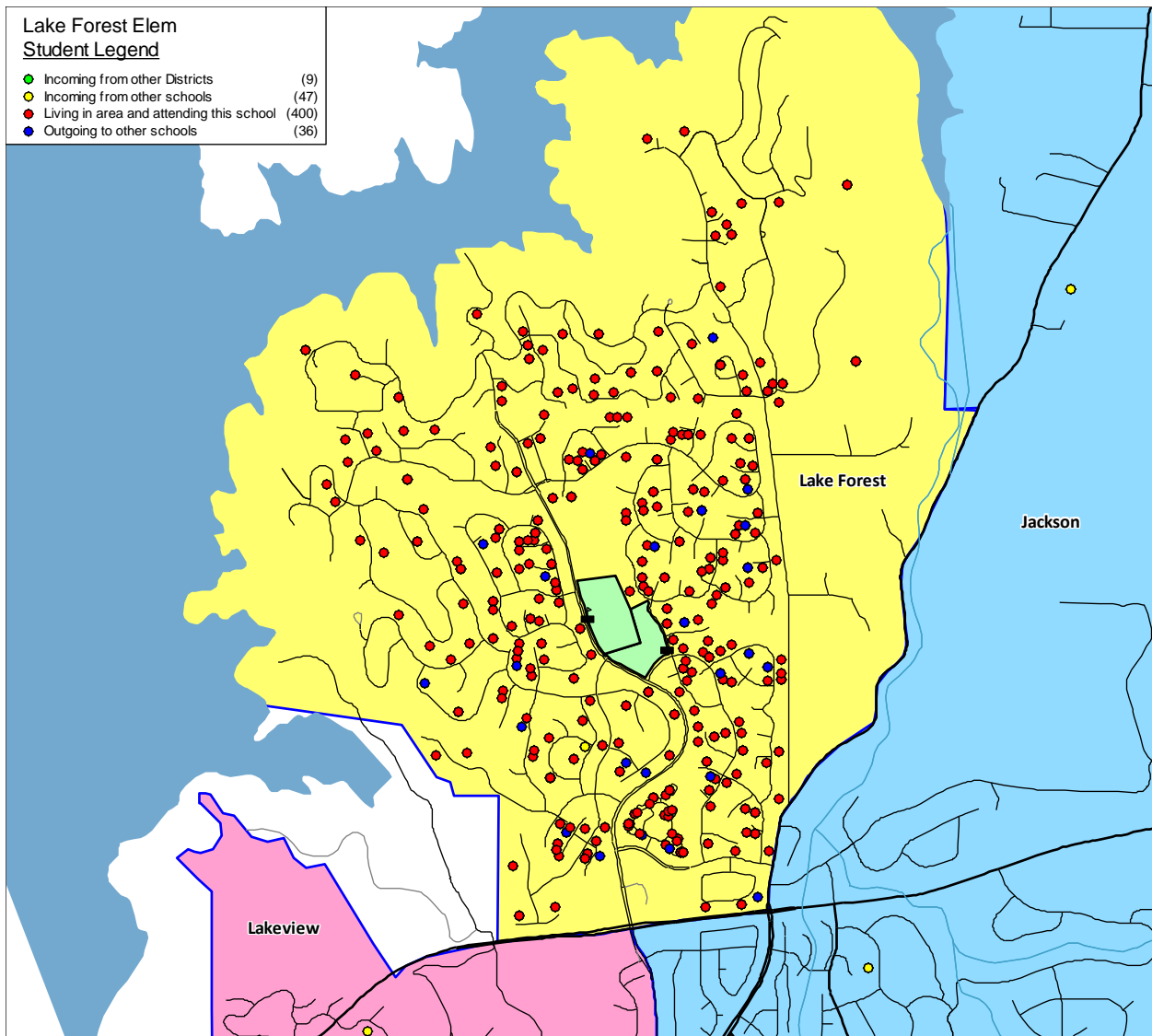
Jackson Elem

YEAR:	Students in boundary				Historic Cohorts			Weighted Average	Attendance Factors		Current Enrollment	23/24 Projection	Net Change
	19/20	20/21	21/22	22/23	19 to 20	20 to 21	21 to 22		Intra	Inter			
Grade													
TK	13	12	10	12	-1	-2	2	0	0.0%	16.7%	18	27	9
K	52	37	58	49	-15	21	-9	0	34.7%	12.2%	72	73	1
1	60	43	52	60	-9	15	2	5	18.3%	8.3%	76	70	-6
2	55	57	51	56	-3	8	4	2	35.7%	10.7%	82	88	6
3	60	58	59	48	3	2	-3	0	14.6%	10.4%	60	68	8
4	48	64	61	58	4	3	-1	0	20.7%	8.6%	75	65	-10
5	55	47	69	62	-1	5	1	1	16.1%	8.1%	77	74	-3
Totals	343	318	360	345	-3.1	7.4	-0.6	1.1	20.0%	10.7%	460	465	5

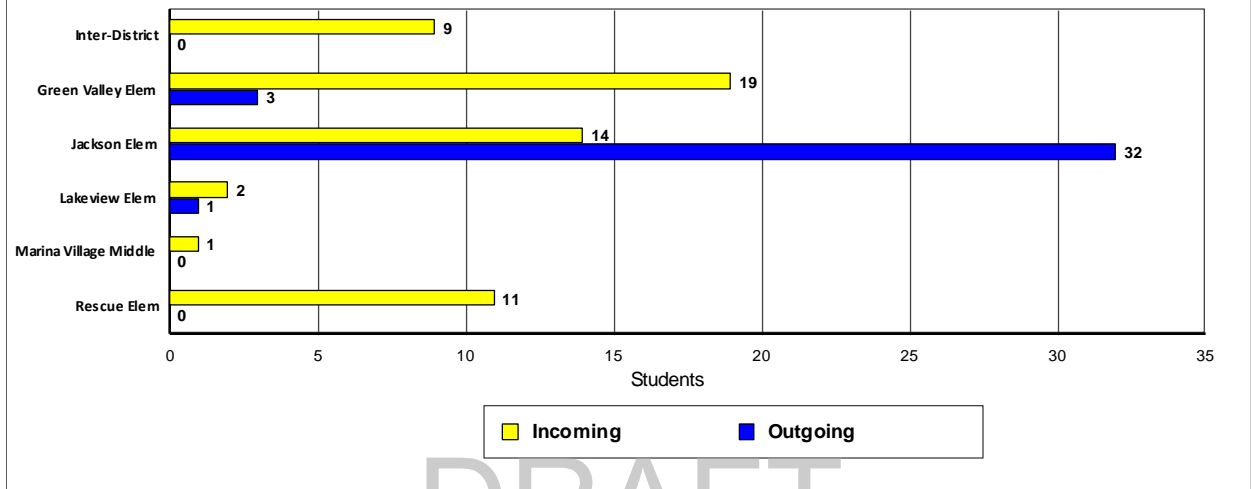
DRAFT

Rescue Union School District

2022/23 Demographics and Enrollment Projections



Lake Forest Elem
Transfer Students

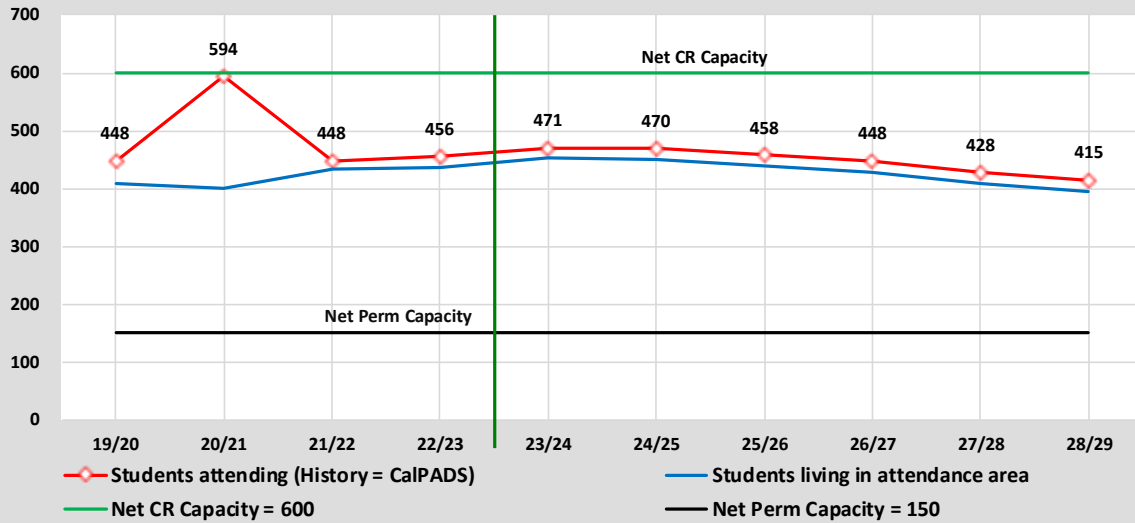


DRAFT

Rescue Union School District

2022/23 Demographics and Enrollment Projections

Capacity & Projected Enrollment Lake Forest Elem



District Loading Standards
 Traditional School
 All Portables Loaded
 Net Classroom Count = 6 plus 18 portables
 Grades Served = TK - 5

Classroom Needs Timeline

Year	Total Students*	Annual Change	Spec. Ed. Students	Net CR Capacity	Unhoused Students	Annual CR Needed	Total CR's Needed	Available Seats	Projected Housing Units
22/23	456	8	0	150	306	12	12	0	
23/24	471	15	0	150	321	1	13	0	0
24/25	470	-1	0	150	320	0	13	0	0
25/26	458	-12	0	150	308	0	11	0	0
26/27	448	-10	0	150	298	0	11	0	0
27/28	428	-20	0	150	278	0	11	0	0
28/29	415	-13	0	150	265	0	10	0	0

* Based on Students Attending (Squares on Graph)
 Net Classroom Count = 6

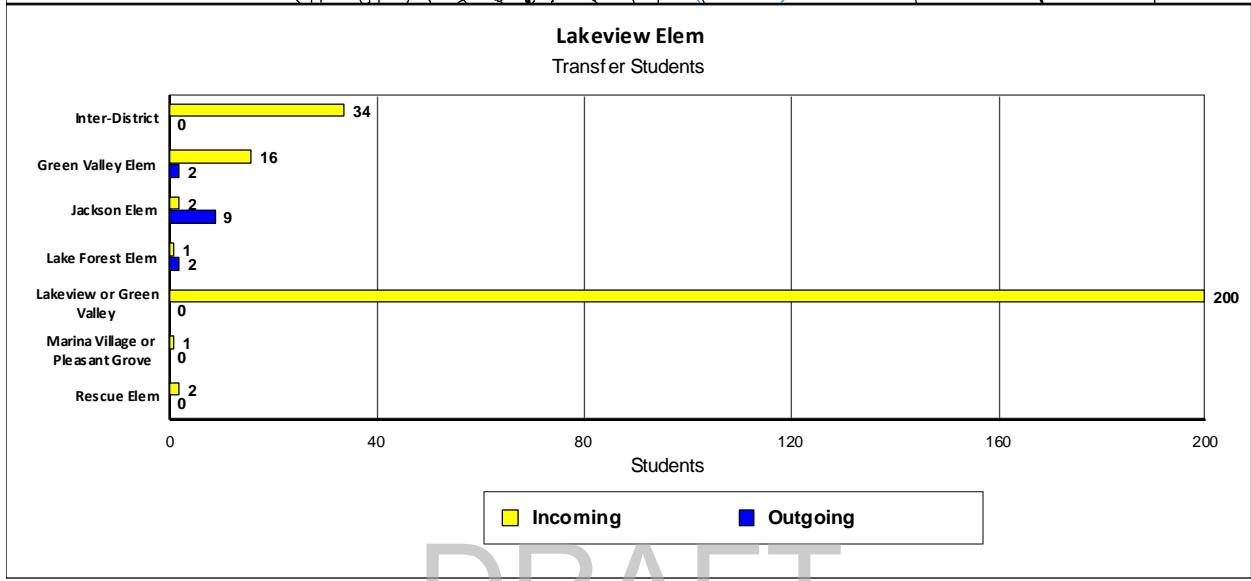
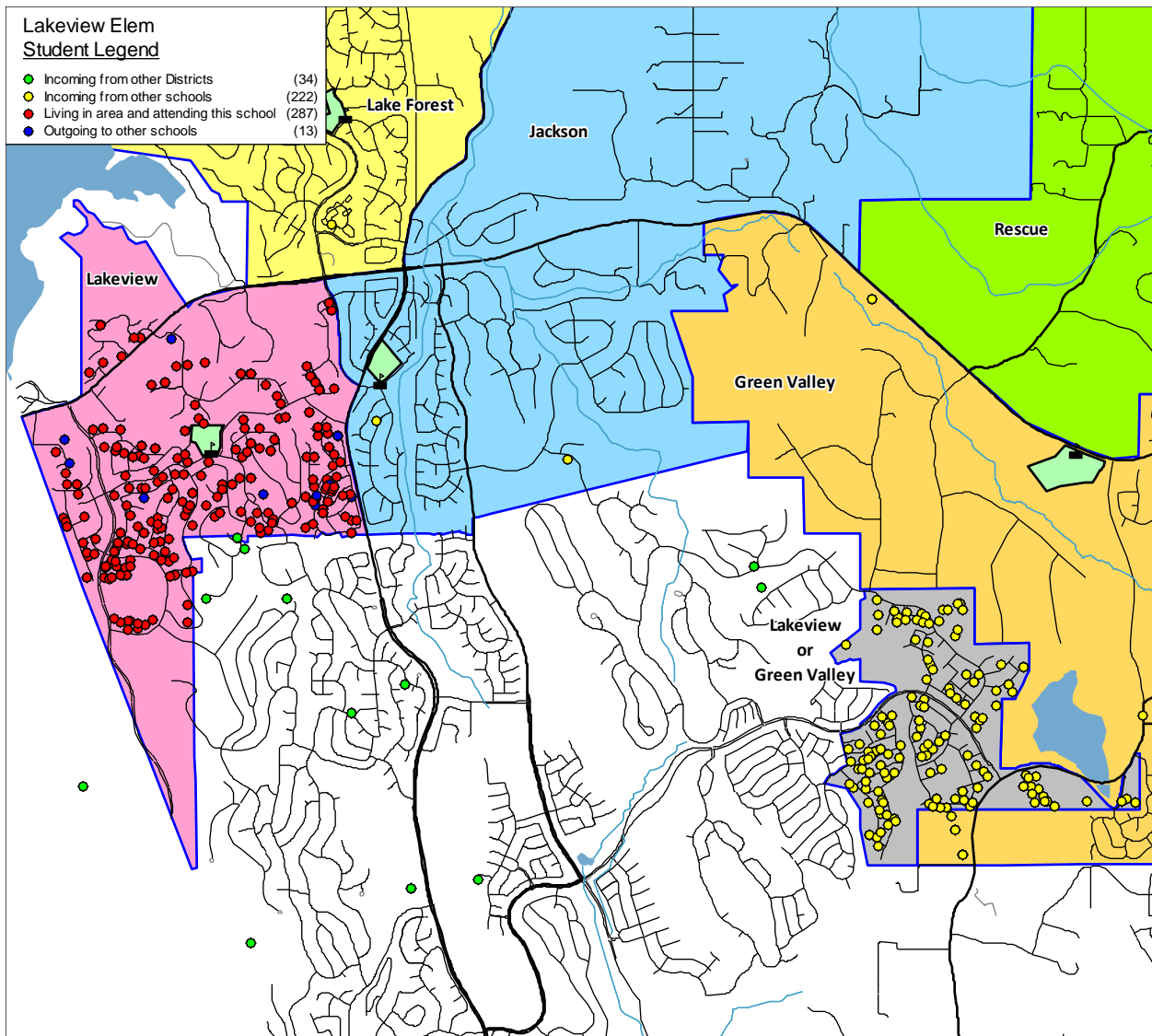
Lake Forest Elem

YEAR:	Students in boundary				Historic Cohorts			Weighted Average	Attendance Factors		Current Enrollment	23/24 Projection	Net Change
	19/20	20/21	21/22	22/23	19 to 20	20 to 21	21 to 22		Intra	Inter			
Grade													
T K	16	16	14	15	0	-2	1	0	0.0%	0.0%	15	33	18
K	66	45	61	53	-21	16	-8	0	3.8%	3.8%	57	57	0
1	58	67	58	69	1	13	8	9	8.7%	2.9%	77	68	-9
2	57	63	81	64	5	14	6	5	-7.8%	1.6%	60	68	8
3	71	60	75	89	3	12	8	9	2.2%	1.1%	92	74	-18
4	66	72	64	74	1	4	-1	0	0.0%	2.7%	76	89	13
5	74	76	80	72	10	8	8	4	6.9%	1.4%	78	82	4
Totals	408	399	433	436	-0.1	9.3	3.1	3.9	2.0%	1.9%	456	471	15

DRAFT

Rescue Union School District

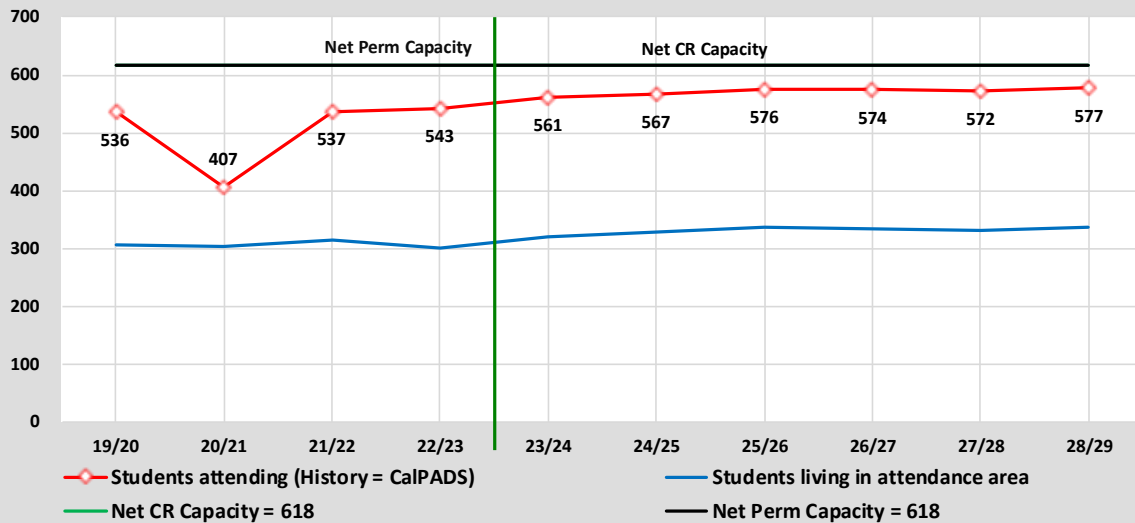
2022/23 Demographics and Enrollment Projections



DRAFT

Rescue Union School District
2022/23 Demographics and Enrollment Projections

Capacity & Projected Enrollment
Lakeview Elem



District Loading Standards
 Traditional School
 All Portables Loaded
 Net Classroom Count = 24
 Grades Served = TK - 5

Classroom Needs Timeline

Year	Total Students*	Annual Change	Spec. Ed. Students	Net CR Capacity	Unhoused Students	Annual CR Needed	Total CR's Needed	Available Seats	Projected Housing Units
22/23	543	6	0	618	0	0	-3	75	
23/24	561	18	0	618	0	0	-2	57	30
24/25	567	6	0	618	0	0	-2	51	15
25/26	576	9	0	618	0	0	-1	42	0
26/27	574	-2	0	618	0	0	-1	44	0
27/28	572	-2	0	618	0	0	-1	46	0
28/29	577	5	0	618	0	0	-1	41	0

* Based on Students Attending (Squares on Graph)
 Net Classroom Count = 24

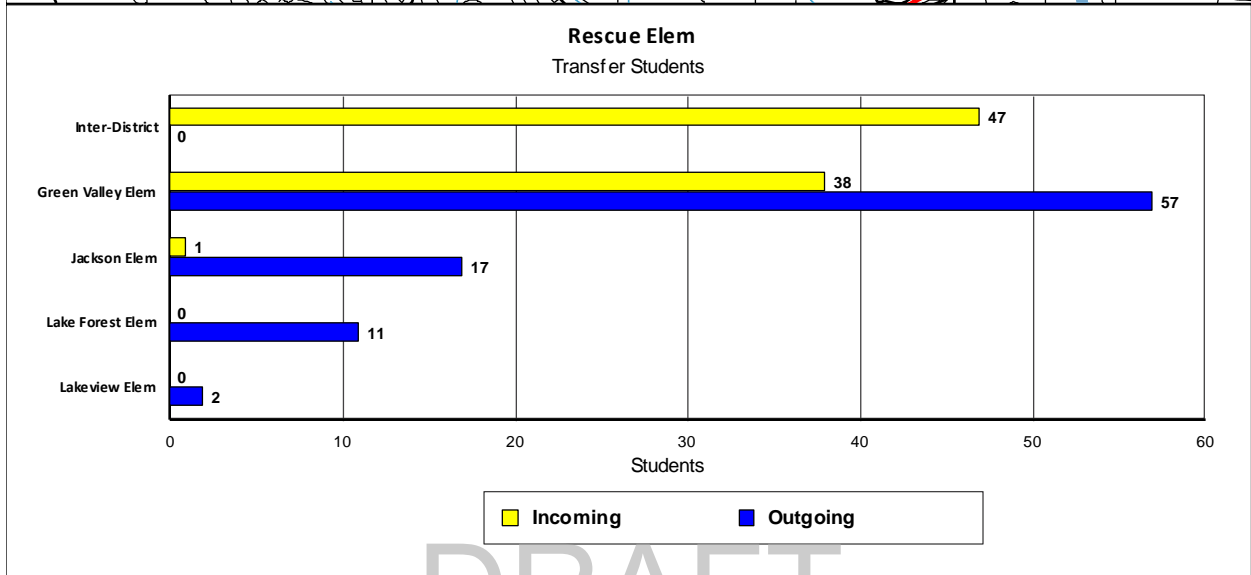
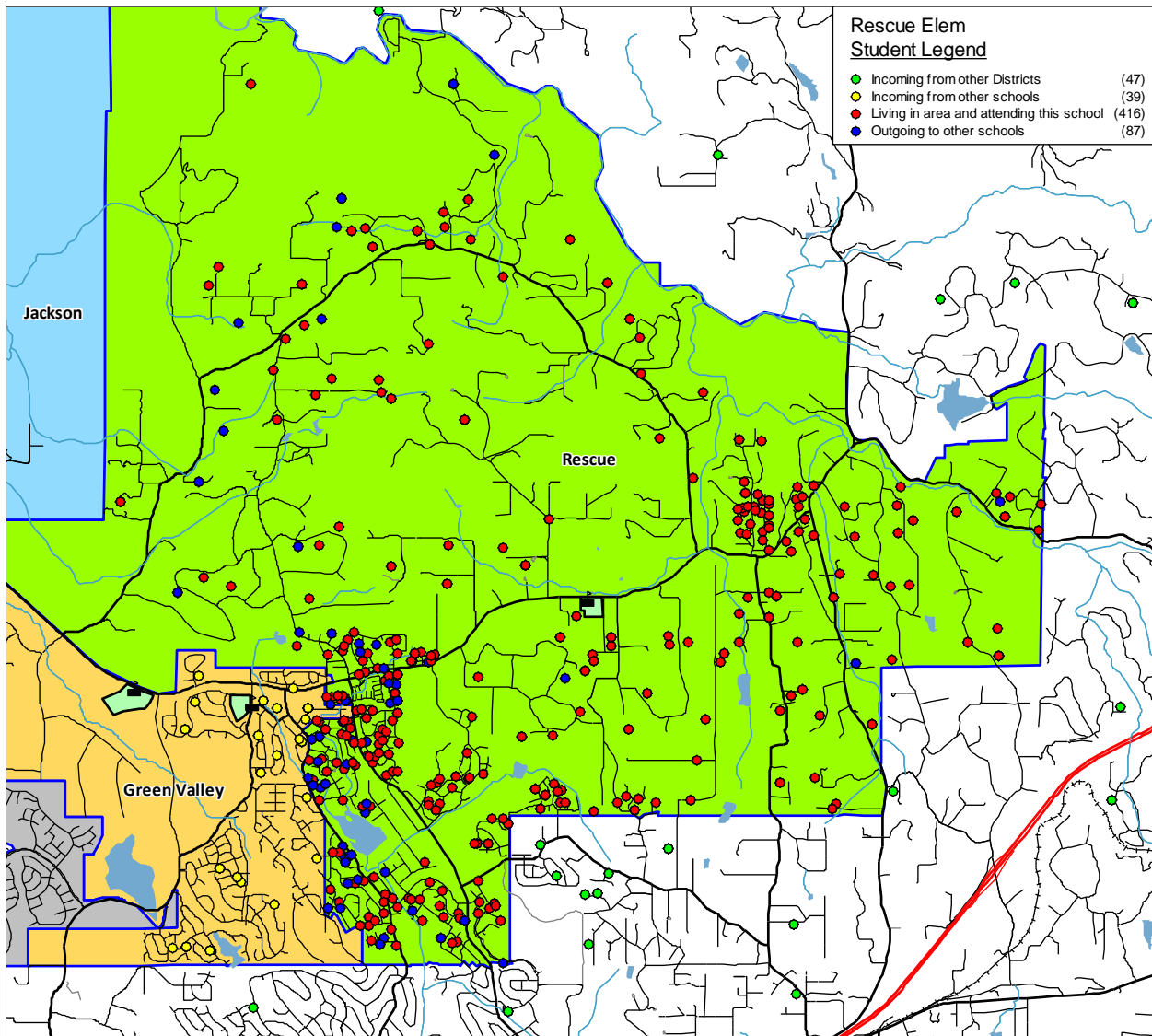
Lakeview Elem

YEAR:	Students in boundary				Historic Cohorts			Weighted Average	Attendance Factors		Current Enrollment	23/24 Projection	Net Change
	19/20	20/21	21/22	22/23	19 to 20	20 to 21	21 to 22		Intra	Inter			
Grade													
T K	14	12	15	17	-2	3	2	0	0.0%	5.9%	20	33	13
K	44	45	44	37	1	-1	-7	0	78.4%	18.9%	73	80	7
1	51	43	52	49	-1	7	5	5	61.2%	8.2%	83	76	-7
2	45	51	50	50	0	7	-2	1	82.0%	6.0%	94	94	0
3	53	43	48	51	-2	-3	1	-1	74.5%	13.7%	96	94	-2
4	54	55	45	51	2	2	3	1	64.7%	13.7%	91	92	1
5	46	53	61	45	-1	6	0	1	77.8%	11.1%	85	92	7
Totals	307	302	315	300	-0.4	3.0	0.3	1.0	62.7%	11.1%	543	561	18

DRAFT

Rescue Union School District

2022/23 Demographics and Enrollment Projections

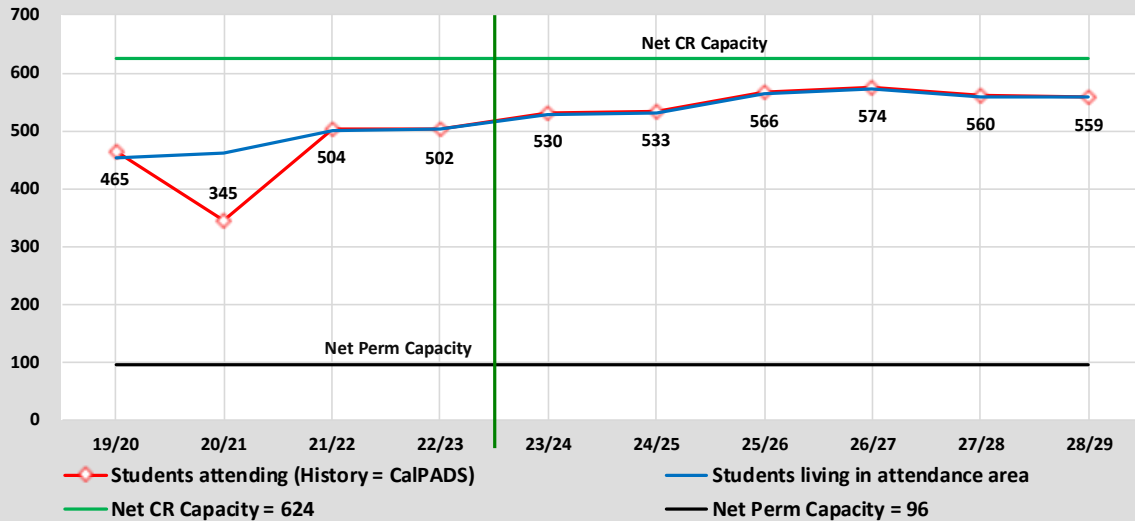


DRAFT

Rescue Union School District

2022/23 Demographics and Enrollment Projections

Capacity & Projected Enrollment Rescue Elem



District Loading Standards
 Traditional School
 All Portables Loaded
 Net Classroom Count = 4 plus 22 portables
 Grades Served = TK - 5

Classroom Needs Timeline

Year	Total Students*	Annual Change	Spec. Ed. Students	Net CR Capacity	Unhoused Students	Annual CR Needed	Total CR's Needed	Available Seats	Projected Housing Units
22/23	502	-2	0	96	406	16	16	0	
23/24	530	28	0	96	434	0	16	0	0
24/25	533	3	0	96	437	1	17	0	26
25/26	566	33	0	96	470	1	18	0	15
26/27	574	8	0	96	478	1	19	0	0
27/28	560	-14	0	96	464	0	17	0	0
28/29	559	-1	0	96	463	0	18	0	0

* Based on Students Attending (Squares on Graph)
 Net Classroom Count = 4

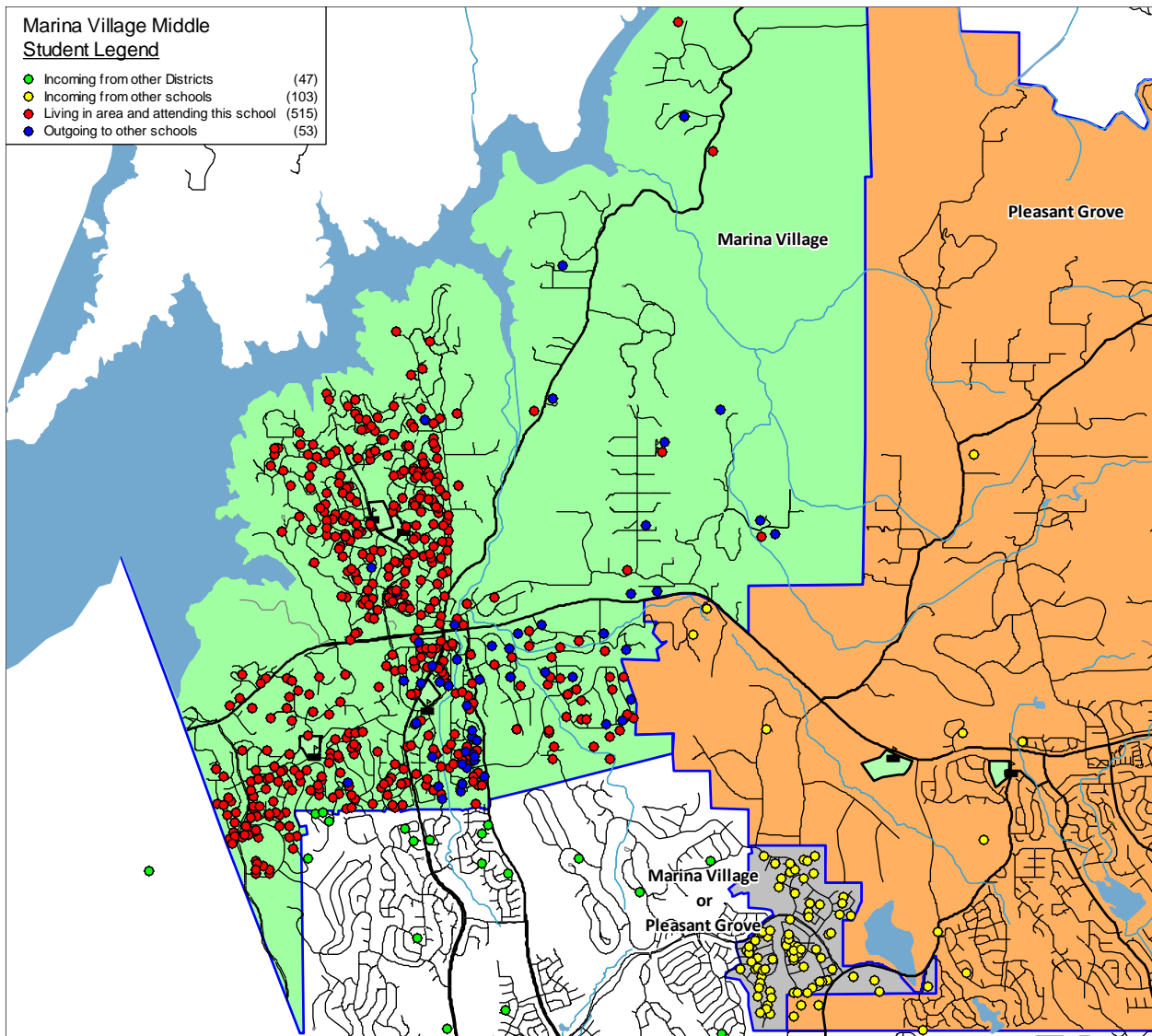
Rescue Elem

YEAR:	Students in boundary				Historic Cohorts			Weighted Average	Attendance Factors		Current Enrollment	23/24 Projection	Net Change
	19/20	20/21	21/22	22/23	19 to 20	20 to 21	21 to 22		Intra	Inter			
Grade													
T K	19	21	18	23	2	-3	5	0	0.0%	4.3%	22	46	24
K	63	71	87	74	8	16	-13	-1	-6.8%	9.5%	76	83	7
1	88	60	74	91	-3	3	4	3	-9.9%	7.7%	89	75	-14
2	77	83	68	69	-5	8	-5	-1	-8.7%	11.6%	71	92	21
3	62	86	89	68	9	6	0	4	-2.9%	13.2%	75	80	5
4	71	68	93	95	6	7	6	2	-14.7%	9.5%	90	65	-25
5	74	71	72	83	0	4	-10	-2	-12.0%	7.2%	79	89	10
Totals	454	460	501	503	2.4	5.9	-1.9	0.7	-7.9%	9.0%	502	530	28

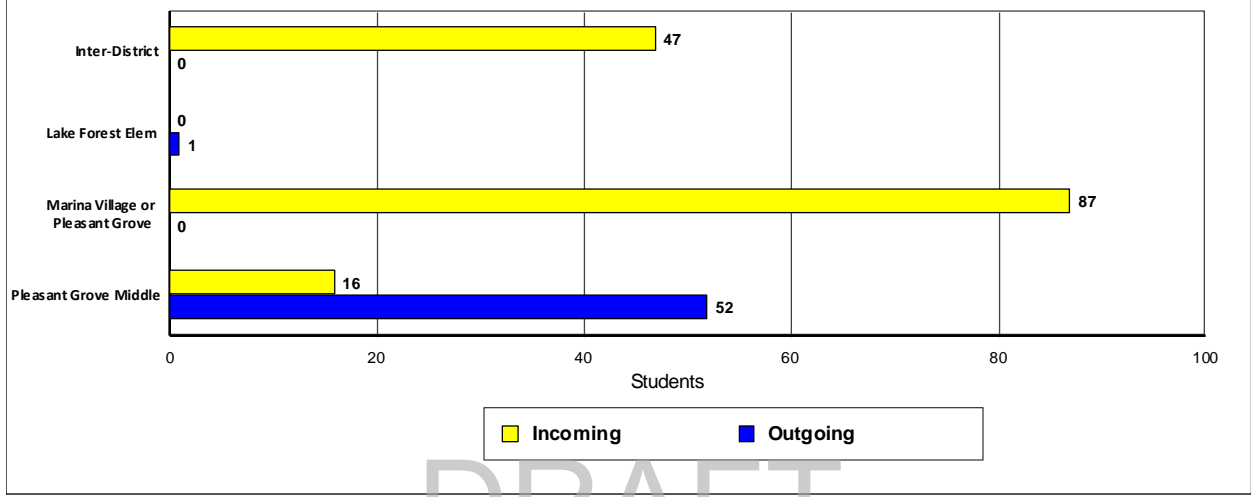
DRAFT

Rescue Union School District

2022/23 Demographics and Enrollment Projections



Marina Village Middle
Transfer Students

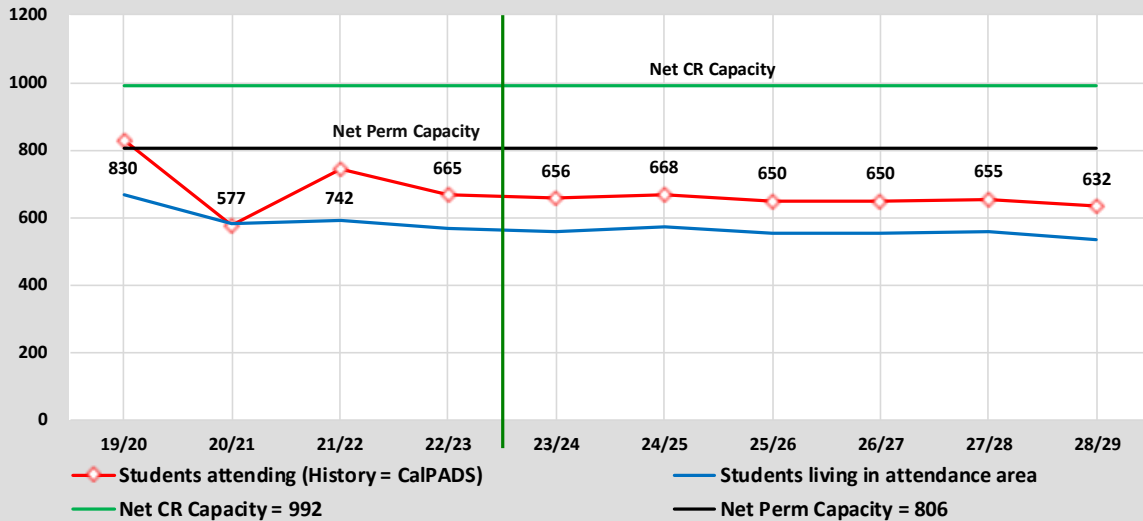


DRAFT

Rescue Union School District

2022/23 Demographics and Enrollment Projections

Capacity & Projected Enrollment Marina Village Middle



District Loading Standards
 Traditional School
 All Portables Loaded
 Net Classroom Count = 26 plus 6 portables
 Grades Served = 6 - 8

Classroom Needs Timeline

Year	Total Students*	Annual Change	Spec. Ed. Students	Net CR Capacity	Unhoused Students	Annual CR Needed	Total CR's Needed	Available Seats	Projected Housing Units
22/23	665	-77	0	806	0	0	-5	141	
23/24	656	-9	0	806	0	0	-5	150	30
24/25	668	12	0	806	0	0	-4	138	15
25/26	650	-18	0	806	0	0	-5	156	0
26/27	650	0	0	806	0	0	-6	156	10
27/28	655	5	0	806	0	0	-5	151	10
28/29	632	-23	0	806	0	0	-6	174	10

* Based on Students Attending (Squares on Graph)
 Net Classroom Count = 26

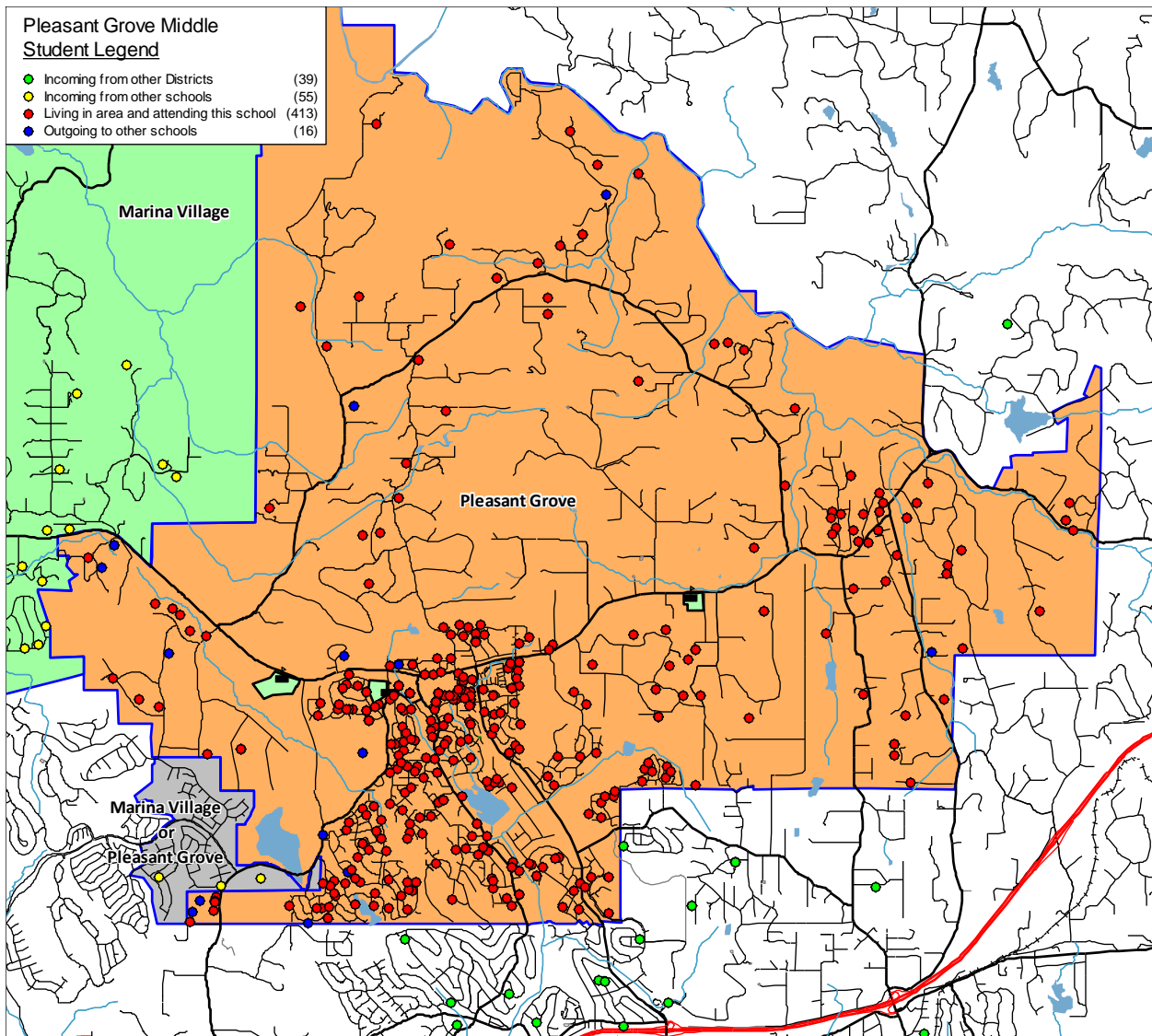
Marina Village Middle

YEAR:	Students in boundary				Historic Cohorts			Weighted Average	Attendance Factors		Current Enrollment	23/24 Projection	Net Change
	19/20	20/21	21/22	22/23	19 to 20	20 to 21	21 to 22		Intra	Inter			
Grade													
T K	43	40	39	44	-3	-1	5	-1	0.0%	0.0%	0	0	0
K	162	127	163	139	-35	36	-24	-1	0.0%	0.0%	0	0	0
1	169	153	162	178	-9	35	15	18	0.0%	0.0%	0	0	0
2	157	171	182	170	2	29	8	7	0.0%	0.0%	0	0	0
3	184	161	182	188	4	11	6	7	0.0%	0.0%	0	0	0
4	168	191	170	183	7	9	1	2	0.0%	0.0%	0	0	0
5	175	176	210	179	8	19	9	6	0.0%	0.0%	0	0	0
6	208	173	180	208	-2	4	-2	0	17.3%	8.7%	262	232	-30
7	220	205	191	173	-3	18	-7	2	17.9%	11.0%	223	259	36
8	239	205	219	187	-15	14	-4	0	-9.1%	5.3%	180	165	-15
Totals	1725	1602	1698	1649	-4.6	17.4	0.7	4.0	8.7%	8.3%	665	656	-9

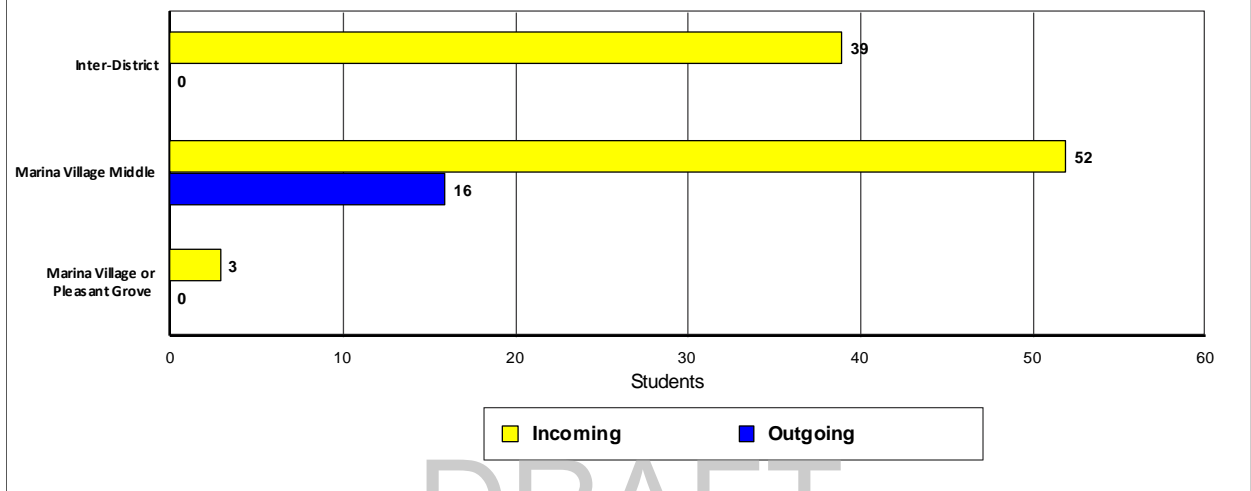
DRAFT

Rescue Union School District

2022/23 Demographics and Enrollment Projections



Pleasant Grove Middle
Transfer Students

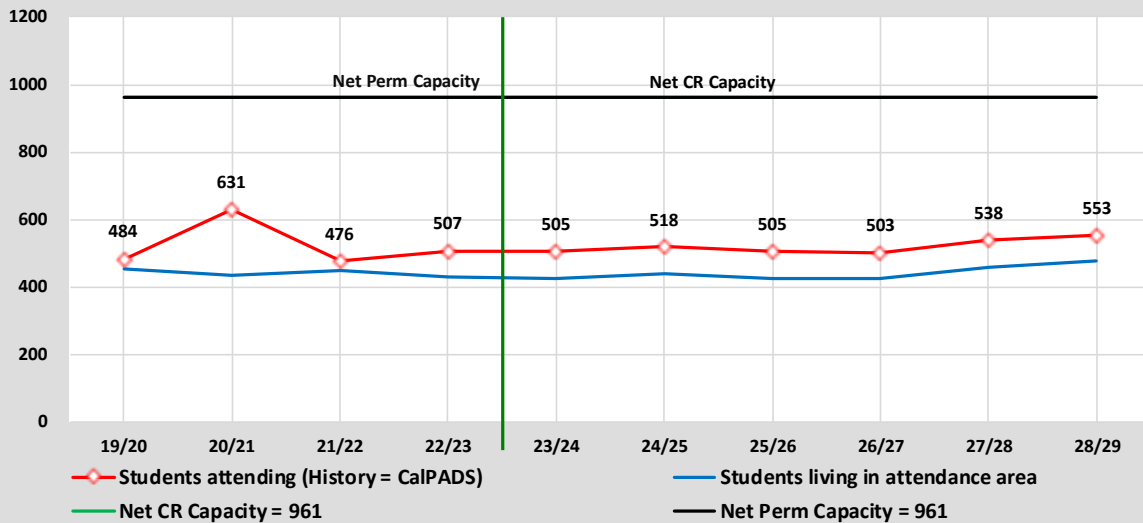


DRAFT

Rescue Union School District

2022/23 Demographics and Enrollment Projections

Capacity & Projected Enrollment Pleasant Grove Middle



District Loading Standards
 Traditional School
 All Portables Loaded
 Net Classroom Count = 31
 Grades Served = 6 - 8

Classroom Needs Timeline

Year	Total Students*	Annual Change	Spec. Ed. Students	Net CR Capacity	Unhoused Students	Annual CR Needed	Total CR's Needed	Available Seats	Projected Housing Units
22/23	507	31	0	961	0	0	-15	454	
23/24	505	-2	0	961	0	0	-15	456	67
24/25	518	13	0	961	0	0	-14	443	56
25/26	505	-13	0	961	0	0	-14	456	45
26/27	503	-2	0	961	0	0	-15	458	36
27/28	538	35	0	961	0	0	-14	423	82
28/29	553	15	0	961	0	0	-13	408	95

* Based on Students Attending (Squares on Graph)
 Net Classroom Count = 31

Pleasant Grove Middle

YEAR:	Students in boundary				Historic Cohorts			Weighted Average	Attendance Factors		Current Enrollment	23/24 Projection	Net Change
	19/20	20/21	21/22	22/23	19 to 20	20 to 21	21 to 22		Intra	Inter			
Grade													
T K	42	37	33	38	-5	-4	5	-1	0.0%	0.0%	0	0	0
K	127	132	155	131	5	23	-24	-1	0.0%	0.0%	0	0	0
1	145	122	135	166	-5	3	11	6	0.0%	0.0%	0	0	0
2	140	134	133	137	-11	11	2	2	0.0%	0.0%	0	0	0
3	125	142	133	129	2	-1	-4	-2	0.0%	0.0%	0	0	0
4	138	129	155	140	4	13	7	3	0.0%	0.0%	0	0	0
5	152	137	140	140	-1	11	-15	-2	0.0%	0.0%	0	0	0
6	143	147	132	147	-5	-5	7	1	-1.4%	7.5%	156	152	-4
7	156	139	158	130	-4	11	-2	2	-1.5%	13.1%	145	165	20
8	156	148	158	152	-8	19	-6	2	28.3%	7.2%	206	188	-18
Totals	1324	1267	1332	1310	-2.8	8.1	-1.9	1.0	8.5%	9.3%	507	505	-2

DRAFT

Rescue Union School District

2022/23 Demographics and Enrollment Projections

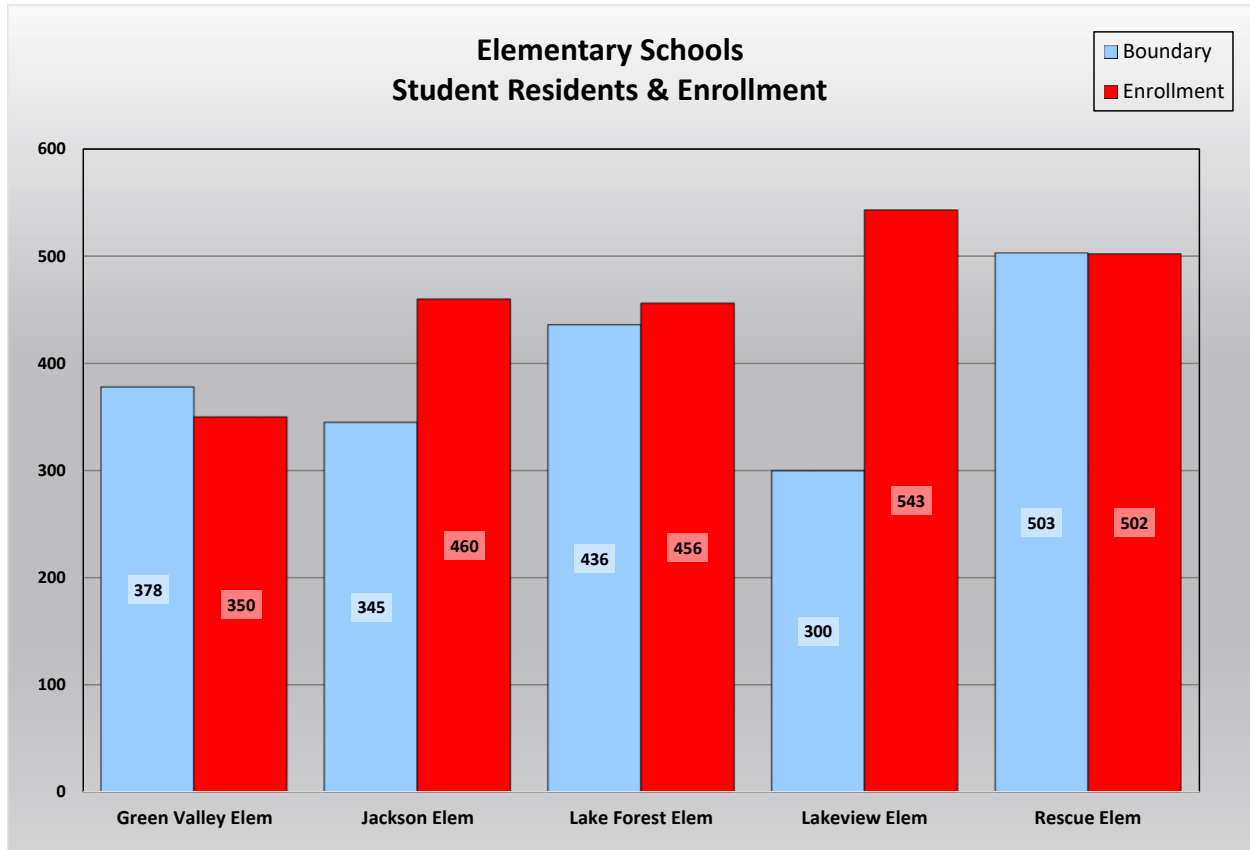
Student Attendance Matrix

ATTENDANCE MATRIX									
		SCHOOL OF ATTENDANCE						Total Residing	
		Green Valley Elem	Jackson Elem	Lake Forest Elem	Lakeview Elem	Rescue Elem	Marina Village Middle		Pleasant Grove Middle
SCHOOL:	AREA								
R	Inter-District	12	34	9	34	47	47	39	222
E	Green Valley Elem	270	35	19	16	38	0	0	378
S	Jackson Elem	0	328	14	2	1	0	0	345
I	Lake Forest Elem	3	32	400	1	0	0	0	436
D	Lakeview Elem	2	9	2	287	0	0	0	300
E	Rescue Elem	57	17	11	2	416	0	0	503
N	Marina Village Middle	0	0	1	0	0	515	52	568
C	Pleasant Grove Middle	0	0	0	0	0	16	413	429
E	Lakeview or Green Valley	6	5	0	200	0	0	0	211
	Marina Village or Pleasant Grove	0	0	0	1	0	87	3	91
	Total Attending	350	460	456	543	502	665	507	3,483
	Intra-Ins	68	98	47	222	39	103	55	632
	Inter-Ins	12	34	9	34	47	47	39	222
	Total In-Flow	80	132	56	256	86	150	94	854
	Intra-Outs	108	17	36	13	87	53	16	330
	Net Transfers	-28	115	20	243	-1	97	78	524
	% In-Flow Students	22.9%	28.7%	12.3%	47.1%	17.1%	22.6%	18.5%	24.5%
	% Out-Flow Students	28.6%	4.9%	8.3%	4.3%	17.3%	9.3%	3.7%	9.5%

This chart summarizes the transfers in and out of each school as were seen by the yellow dots and blue dots on the school attendance maps. In addition, the data has been analyzed to determine the total in-flow and out-flow rates for each school. The school with the largest in-flow rate is Lakeview Elementary and the school with the largest out-flow rate is Green Valley Elementary.

DRAFT

Student Residency and Enrollment Comparison



This chart compares each individual elementary school enrollment to the students that reside within the school attendance boundary. Utilizing this data helps make it easy to see which schools have the largest and smallest enrollments as well as which boundaries are most populated. Schools with more students enrolled than those living in the boundary have a net transfer into the school. This is typically found at schools with special programs such as Gate or Dual Immersion, schools housing students from overcrowded or Program Improvement (PI) schools, and schools with more capacity than the student population living in the boundary.

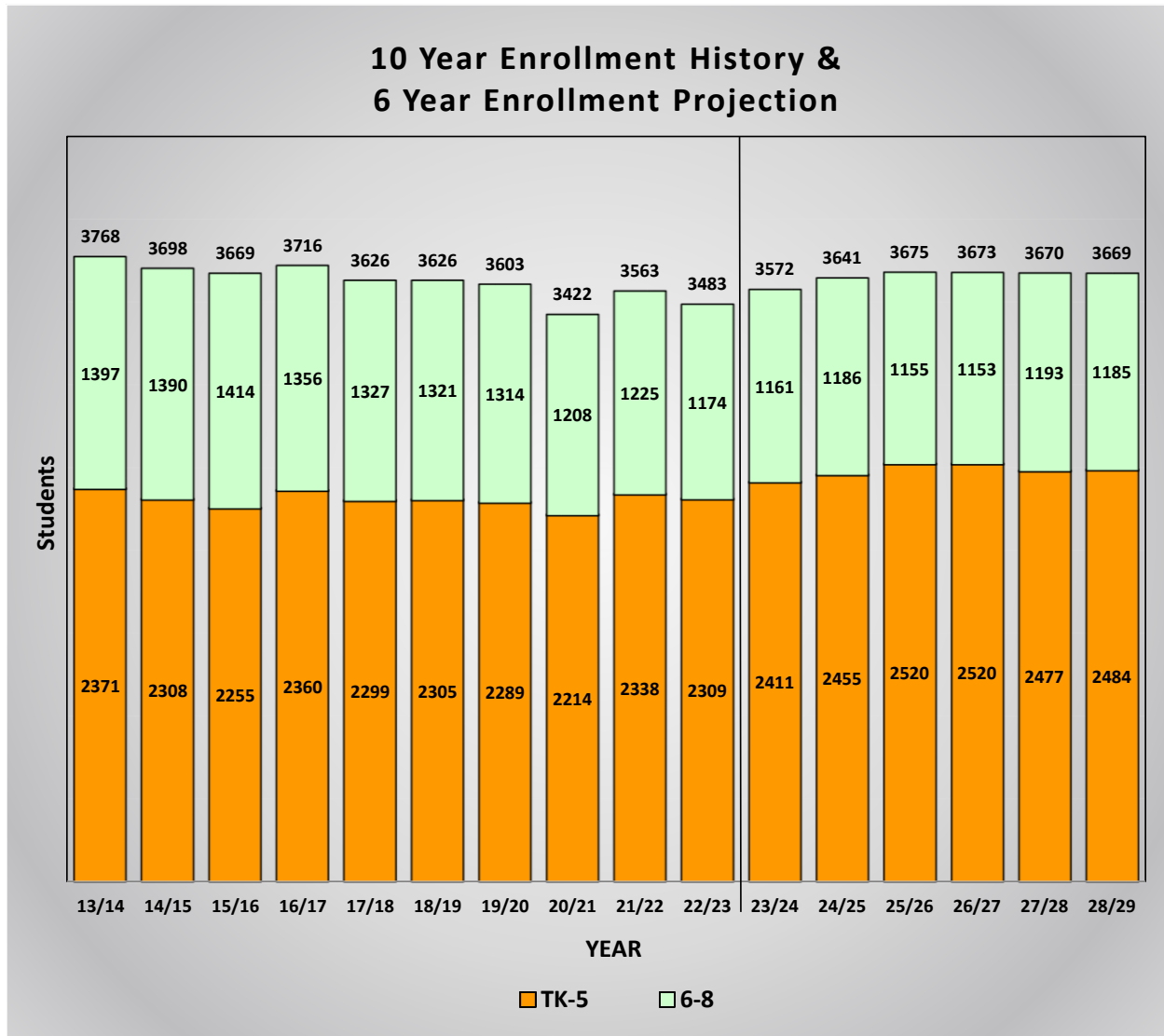
DRAFT

Rescue Union School District

2022/23 Demographics and Enrollment Projections

Ten Year Enrollment History and Six Year Enrollment Projections

This graph shows a summary of the projections for the entire District. It shows the current enrollment for 2022/23, the historic enrollment for the past nine years, and the projected enrollment for the next six years. The end result is a total of 3,669 students in the District in 2028/29. Non-Public School (NPS) students are not included in these enrollment numbers.



Non-Public School (NPS) students are not included in these enrollment numbers.

The Rescue Union School District has declined slightly in enrollment over the past ten years from an enrollment of 3,768 in 2013/14 to the current enrollment of 3,483.

This graph is color coded by grade groupings:

Orange represents the historic and projected enrollment for the elementary school grades TK-5.

Green represents the historic and projected enrollment for the middle school grades 6-8.

The entire District enrollment is shown at the top of each bar.

Rescue Union School District

2022/23 Demographics and Enrollment Projections

Enrollment Projection Summary by Grade

The chart below shows three years of historic enrollment, the current enrollment, and six years of projected enrollment by grade.

Rescue Union School District Enrollment Projection Summary by Grade										
Grade	Historic Enrollment			Current Enrollment	Projected Enrollment					
	<u>19/20</u>	<u>20/21</u>	<u>21/22</u>	<u>22/23</u>	<u>23/24</u>	<u>24/25</u>	<u>25/26</u>	<u>26/27</u>	<u>27/28</u>	<u>28/29</u>
TK	93	87	83	92	174	215	285	284	283	283
K	339	318	359	326	350	343	332	331	330	329
1	374	330	356	389	340	363	356	345	345	345
2	355	367	371	367	413	363	386	379	369	369
3	370	351	373	376	371	417	367	390	384	374
4	371	381	381	382	379	373	419	370	393	388
5	387	380	415	377	384	381	375	421	373	396
6	401	379	378	420	384	390	388	382	428	379
7	453	400	408	368	424	389	395	393	388	434
8	460	429	439	386	353	407	372	378	377	372
Total TK-5	2,289	2,214	2,338	2,309	2,411	2,455	2,520	2,520	2,477	2,484
Total 6-8	1,314	1,208	1,225	1,174	1,161	1,186	1,155	1,153	1,193	1,185
District Totals	3,603	3,422	3,563	3,483	3,572	3,641	3,675	3,673	3,670	3,669

Enrollment Projection Summary by School

Rescue Union School District Enrollment Projection Summary by School							
School	Current Enrollment						
	<u>22/23</u>	<u>23/24</u>	<u>24/25</u>	<u>25/26</u>	<u>26/27</u>	<u>27/28</u>	<u>28/29</u>
Green Valley Elem	350	384	416	435	441	442	460
Jackson Elem	460	465	469	485	483	475	473
Lake Forest Elem	456	471	470	458	448	428	415
Lakeview Elem	543	561	567	576	574	572	577
Rescue Elem	502	530	533	566	574	560	559
Elementary Totals	2,311	2,411	2,455	2,520	2,520	2,477	2,484
Marina Village Middle	665	656	668	650	650	655	632
Pleasant Grove Middle	507	505	518	505	503	538	553
Middle Totals	1,172	1,161	1,186	1,155	1,153	1,193	1,185
District Totals	3,483	3,572	3,641	3,675	3,673	3,670	3,669
Annual Change		89	69	34	-2	-3	-1

DRAFT

Rescue Union School District

2022/23 Demographics and Enrollment Projections

2022/23 One Year Enrollment Projection by School and Grade

Rescue Union School District											
Enrollment Projections											
YEAR 23/24, 1 Year Proj.											
School	TK	K	1	2	3	4	5	6	7	8	TOTAL
Green Valley Elem	35	57	51	71	55	68	47	0	0	0	384
Jackson Elem	27	73	70	88	68	65	74	0	0	0	465
Lake Forest Elem	33	57	68	68	74	89	82	0	0	0	471
Lakeview Elem	33	80	76	94	94	92	92	0	0	0	561
Rescue Elem	46	83	75	92	80	65	89	0	0	0	530
Marina Village Middle	0	0	0	0	0	0	0	232	259	165	656
Pleasant Grove Middle	0	0	0	0	0	0	0	152	165	188	505
Ind Study	0	0	0	0	0	0	0	0	0	0	0
Totals	174	350	340	413	371	379	384	384	424	353	3,572
Current CalPADS	92	326	389	367	376	382	377	420	368	386	3,483
Net Change	82	24	-49	46	-5	-3	7	-36	56	-33	89
Cohort Change			14	24	4	3	2	7	4	-15	

Rescue Union School District has a current enrollment of 3,483 students. The projected enrollment for next year shows an increase of 89 students. This one year summary analyzes the net change between the current District enrollment by school and by grade, and the projected enrollment for 2023/24.

The students living in the boundary generate the cohort factors which are calculated for the past three years and the average is determined. Those cohorts are then used to determine the students who will be residing in each attendance area for the following years. Next the attendance factor is used to determine the net enrollment for each grade. The attendance factor is determined by analyzing the current year of students to see how many Inter- and Intra-district transfers there are. The cohort change factor indicates the change in the number of students for each grade compared to the number of students in the prior grade the previous year.

These projections assume the transfers between schools remain consistent. If changes in facilities, schedules, programs or policies are made, then the patterns may be impacted.

The actual enrollment for each elementary may vary from the numbers shown depending on which sites offer TK classes.

DRAFT

Rescue Union School District
2022/23 Demographics and Enrollment Projections

SCHOOL FACILITY UTILIZATION

The following chart shows the current and projected utilization rates for each school. It has been color coded with blue representing schools with a utilization rate of under 70%, yellow representing a utilization rate of at least 70% but under 80% and red for the schools that have over 100% utilization. The utilization indicates the long term impacts of the changes in enrollment as compared to the school capacities.

School Facility Utilization			2022/23	2028/29	2022/23	2028/29
	Net	Net CR	Current	Projected	Current	Projected
<u>Elementary Schools</u>	<u>Classrooms</u>	<u>Capacity</u>	<u>Enrollment</u>	<u>Enrollment</u>	<u>Utilization</u>	<u>Utilization</u>
Green Valley Elem	27	689	350	460	50.8%	66.8%
Jackson Elem	26	672	460	473	68.5%	70.4%
Lake Forest Elem	24	600	456	415	76.0%	69.2%
Lakeview Elem	24	618	543	577	87.9%	93.4%
Rescue Elem	26	624	502	559	80.4%	89.6%
Sub-Totals	127	3,203	2,311	2,484	72.2%	77.6%
<u>Middle Schools</u>						
Marina Village Middle	32	992	665	632	67.0%	63.7%
Pleasant Grove Middle	31	961	507	553	52.8%	57.5%
Sub-Totals	63	1,953	1,172	1,185	60.0%	60.7%
District Totals	190	5,156	3,483	3,669	67.6%	71.2%

For 2022, the school with the highest percentage of available space is Green Valley Elementary and the school that is impacted the most is Lakeview Elementary.

The chart below shows the capacity without any portable classrooms.

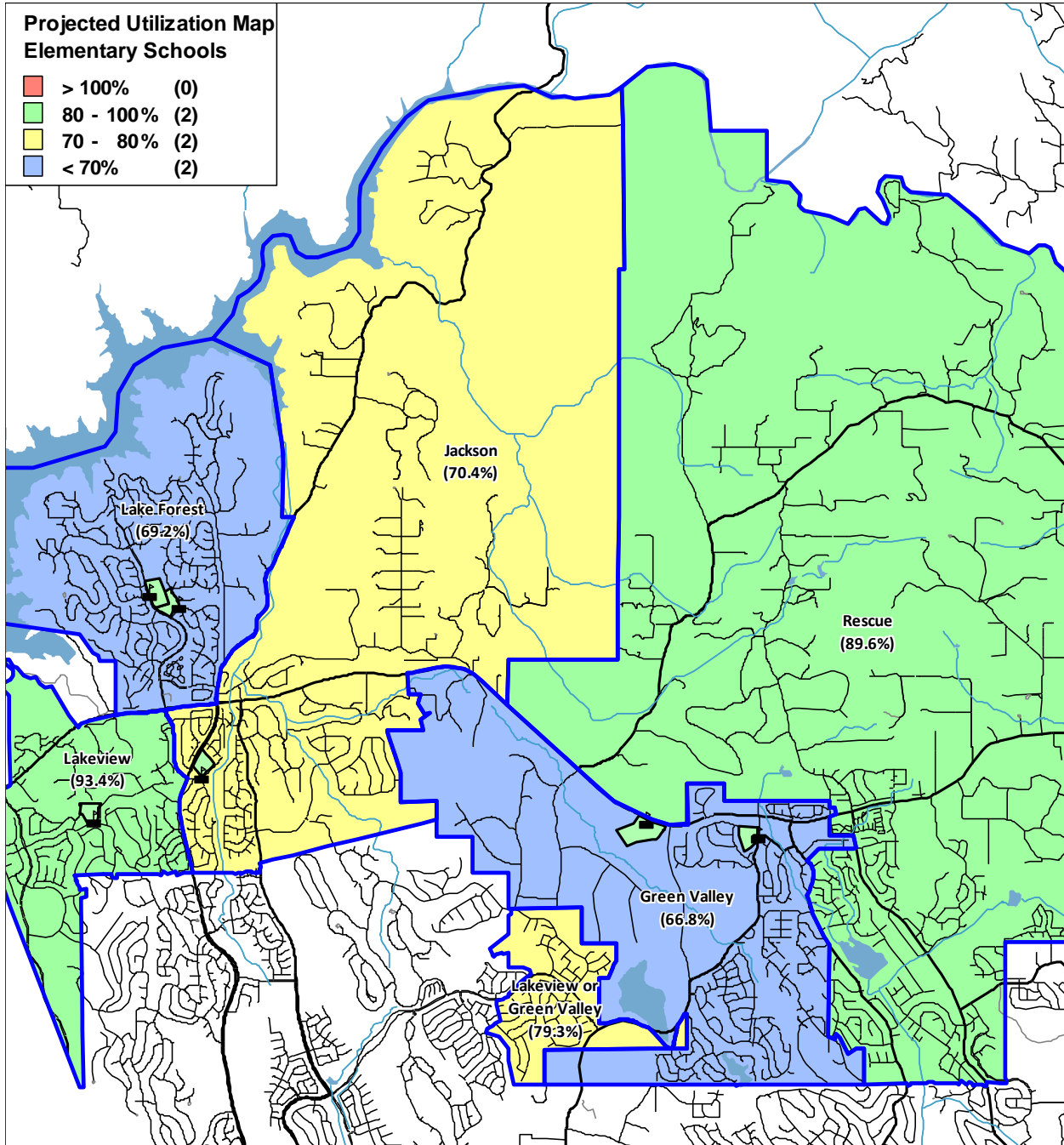
School Facility Utilization			2022/23	2028/29	2022/23	2028/29
	Net Perm	Net Perm CR	Current	Projected	Current	Projected
<u>Elementary Schools</u>	<u>Classrooms</u>	<u>Capacity</u>	<u>Enrollment</u>	<u>Enrollment</u>	<u>Utilization</u>	<u>Utilization</u>
Green Valley Elem	8	204	350	460	171.6%	225.5%
Jackson Elem	13	336	460	473	136.9%	140.8%
Lake Forest Elem	6	150	456	415	304.0%	276.7%
Lakeview Elem	24	618	543	577	87.9%	93.4%
Rescue Elem	4	96	502	559	522.9%	582.3%
Sub-Totals	55	1,404	2,311	2,484	164.6%	176.9%
<u>Middle Schools</u>						
Marina Village Middle	26	806	665	632	82.5%	78.4%
Pleasant Grove Middle	31	961	507	553	52.8%	57.5%
Sub-Totals	57	1,767	1,172	1,185	66.3%	67.1%
District Totals	112	3,171	3,483	3,669	109.8%	115.7%

DRAFT

Rescue Union School District

2022/23 Demographics and Enrollment Projections

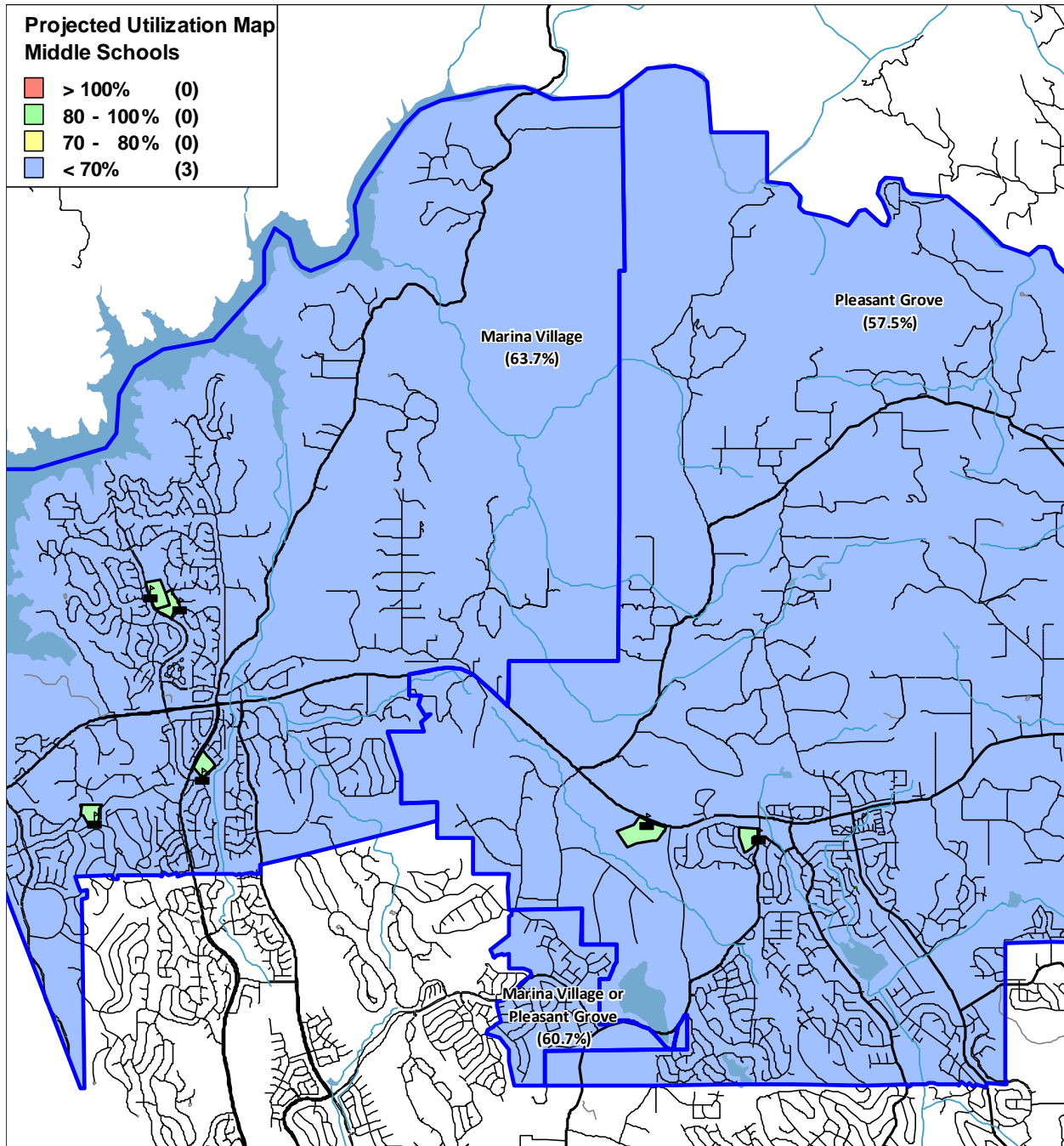
The color-coded map below shows the projected utilization for the elementary schools.



DRAFT

Rescue Union School District 2022/23 Demographics and Enrollment Projections

The color-coded map below shows the projected utilization for the middle schools.



DRAFT