



## **RESCUE UNION SCHOOL DISTRICT**

2390 Bass Lake Road Rescue, CA 95672 (530) 677-4461 / FAX (530) 677-0719

[www.rescueusd.org](http://www.rescueusd.org)

### **BOARD OF TRUSTEES REGULAR MEETING MINUTES**

Tuesday, June 13, 2023 - 6:30 p.m. Open Session  
Rescue District Office Board Room

The Public's health and well-being are the top priority for the Board of Trustees of the Rescue Union School District and all are urged to take all appropriate health safety precautions. To facilitate this process, there were two options to view and/or participate in this open session meeting in person or via Zoom.

#### **DISTRICT MISSION**

Rescue Union School District, in partnership with families and the community, is dedicated to the success of every student by providing a challenging, comprehensive and quality education in a safe environment in which all individuals are respected, valued, connected and supported.

#### **PLEASE NOTE:**

These are provided as summary minutes. The audio recording of the meeting is available for review at:  
<http://www.rescueusd.org/School-Board/Agendas-Minutes/index.html>

**CALL TO ORDER:** Board vice president called the meeting to order at 6:00 p.m.

#### **ROLL CALL:**

- ✓ Michael Gordon, President
- ✓ Kim White, Vice President
- ✓ Michelle Bebout, Clerk  
Jamie Hunter, Member
- ✓ Michael Flaherty
- ✓ Jim Shoemake, Superintendent and Board Secretary

Board President Michael Gordon attended the meeting remotely via Zoom.

#### **PUBLIC COMMENT:**

(Closed session agenda items only)

There were no comments concerning items on the Closed Session agenda.

## **CLOSED SESSION:**

The Board adjourned to closed session to discuss matters of personnel, security, negotiations, student discipline, litigation, or other matters as authorized by Government Code Sections 3549.1, 54956.9, 54956.8, 54957, and 54957.6 and Education Code Sections 35146 and 48918.

Conference with Labor Negotiator - Discussion with the District's Superintendent, Jim Shoemake, and/or labor negotiators, Lisa Donaldson and Dustin Haley, regarding directions and issues in negotiations with Rescue Union Federation of Teachers (RUFT), California School Employees Association (CSEA), Confidential Staff, and Administrative Management.

## **OPEN SESSION:**

Convened open session in the Boardroom at 6:33 p.m.

Welcome - The Board vice president provided an introduction to Board meeting proceedings.

Flag Salute - Board vice president led the flag salute.

### **1. Adoption of Agenda**

(Consideration for Action)

Trustee Flaherty moved and Trustee Bebout seconded to adopt the agenda as presented. Motion passed 4-0.

## **REPORTS AND COMMUNICATION:**

Report from Closed Session - Board vice president reported no action taken in closed session.

Superintendent's Report - The Superintendent presented a report on Bright Spots happening within the district, including the success of music bands at both elementary and middle school levels. Marina Village and Pleasant Grove bands received many awards at a recent spring competition. The 2023 County Spelling Bee was a highlight for our schools, nearly all of which participated. RUSD volunteers have contributed positively at all sites, connecting with students in impactful ways. MVMS Principal Levi Cambridge was selected as District Administrator of the Year and honored at the Association of California School Administrators (ACSA) dinner in May. The RUSD Food Services Dept. is making new, healthy, and well-received recipes for students and providing more nutritional information to families. Planned facilities upgrades include Lake Forest and Jackson murals, shade structures, new gym flooring and roofing, and the All-Abilities Public Playground which will be built and opened to the community soon.

There were no public comments.

## **GENERAL:**

### **2. Local Control Accountability Plan (LCAP)**

(Information Only)

A public hearing was held at the Board meeting to solicit recommendations and comments from the public regarding the specific actions and expenditures proposed to be included in the Local Control Accountability Plan. Superintendent Shoemake presented a slide presentation on involving Educational Partners, data-informed themes, the district's financial health, and the 3 LCAP goals: student academics, student socio-emotional learning, and infrastructure for successful education. The Superintendent recommends approval of the 2023-2024 Local Control Accountability Plan (LCAP) at the June 27, 2023 Regular Board meeting.

OPEN PUBLIC HEARING: 7:09 p.m.  
CLOSE PUBLIC HEARING: 7:10 p.m.

There were no public comments.

**BUSINESS AND FACILITIES:**

3. Public Hearing - Proposed 2023-2024 Budget Presentation (Information Only)

Each year the governing board of each school district shall hold a public hearing on the budget to be adopted for the subsequent fiscal year. A slide presentation was shown by Assistant Superintendent of Business Services Lisa Donaldson, summarizing key budget points. The Superintendent recommends approval and adoption of the 2023-2024 Budget at the June 27, 2023 Regular Board meeting with a Resolution for Committed Funds also scheduled for the June 27, 2023 Regular Board meeting.

OPEN PUBLIC HEARING: 8:07 p.m.  
CLOSE PUBLIC HEARING: 8:08 p.m.

There were no public comments.

4. Statement of Reasons for Assigned and Unassigned Reserves Above the State Recommended Minimum Level (Information Only) Assistant Superintendent of Business Services Lisa Donaldson presented information on the Statement of Reasons for Assigned and Unassigned Reserves Above the State Recommended Minimum Level. Per Education Code Section 42127(a)(2)(B) school districts are required to include this statement with the presentation of the budget.

There were no public comments.

5. Teacher On Special Assignment (TOSA) Job Description (Consideration for Action)

The Superintendent recommended the Board approve the Teacher On Special Assignment (TOSA) Job Description. This is a new position that is being funded from one-time Special Education funds being spent over the next two years. These one-time monies were proposed and accepted at the Rescue USD Special Education Board Study on October 14, 2022.

There were no public comments.

Trustee Bebout moved and Trustee Flaherty seconded to approve the Teacher On Special Assignment (TOSA) Job Description and position. Motion passed 4-0.

**CONSENT AGENDA:**

All matters listed under Consent Agenda are considered to be routine or sufficiently supported by prior or accompanying reference materials and information as to not require additional discussion. A motion as referenced below enacts all items.

The Board President called for public comment on any of the items on the consent agenda. There were no public comments. Trustee Flaherty moved and Trustee Bebout seconded to approve the balance of the Consent Agenda. Motion passed 4-0.

6. Board Meeting Minutes- Minutes of the May 9, 2023 Regular Board Meeting (Materials provided)
7. Study Session Meeting Minutes - Minutes of the May 23, 2023 Study Session (Materials provided)
8. Human Resources-the District's long-range goal is to recruit a diverse, high quality staff with student focused goals and philosophies. Periodically, changes in staffing occur due to need for additional positions, resignations, or leaves of absence. All positions listed are within current budget allocations (Materials provided)
9. District Expenditure- Warrants must regularly be presented to the Board of Trustees for ratification. Detailed warrant order listings are available at the District Office. The supplement reflects expenditures from 5/1/23 through 5/31/23 (Materials provided)
10. District Purchase Orders - Purchase orders must regularly be presented to the Board of Trustees for ratification. The supplemental reflects expenditures from 5/1/23 through 5/31/23 (Materials provided)
11. Library Services MOU – RUSD and the El Dorado County Office of Education - The District has identified the El Dorado County Office of Education as the entity that will provide general oversight of school library services. Administration recommends approval of the Memorandum of Understanding (MOU) (Materials provided)
12. HURON/Studer Education contract (Materials provided)
13. DSA Inspector Approval Agreement for GVE modernization project (Materials provided)
14. Vicini Inc. Drainage Contract for Jackson Elementary (Materials provided)
15. Bayshore Painters Contract for MVMS Exterior (Materials provided)
16. SKI AIR Contract for MVMS Kitchen Mini Split Systems A/C Install (Materials provided)
17. Acco Engineered Systems Contract for PGMS HVAC (Materials provided)
18. Peter M. Berchtold Architect Contract for PGMS Kitchen Remodel and Expansion (Materials provided)
19. KYA Services LLC Contract for PGMS Flooring (Materials provided)
20. Carter Kelly Inc. Contract for Green Valley Construction Project (Materials provided)
21. 2023-2024 Joint Food Service Director Agreement By and Between RUSD and BUSD (Materials provided)

**ADJOURNMENT:**

Trustee White moved to adjourn the meeting at 8:15 p.m.

---

Michelle Bebout, Clerk

Date

---

Michael Gordon, President

Date

RESCUE UNION SCHOOL DISTRICT

**AGENDA: Certificated Personnel**

**RECOMMENDATION:**

The Superintendent recommends the Board approve the following personnel actions.

**BACKGROUND:**

Periodically changes in administrative staffing occur due to hiring, promotions, resignations or requests for leaves of absence. The Board must formally approve these requests.

**STATUS:**

The following certificated personnel changes are listed on the agenda.

Name	Personnel Action	Position FTE	Position	School or Dept.	Effective Date
Swartz, Jessica	Resignation	1.0	Teacher	Marina Village	5/26/2023

**FISCAL IMPACT:**

Fiscal impact will be reflected in the 2023-2024 budget.

**BOARD GOALS:**

Board Focus Goal IV - STAFF NEEDS

Attract and retain diverse, knowledgeable, dedicated employees who are skilled and supported in their commitment to provide quality education for our students.

**RESCUE UNION SCHOOL DISTRICT**

**AGENDA ITEM: Classified Personnel**

**RECOMMENDATION:**

The Superintendent recommends the Board approve the following personnel actions.

**BACKGROUND:**

Periodically changes in classified staffing occur due to hiring, resignations or requests for leaves of absence. The Board must formally approve these requests.

**STATUS:**

The following classified personnel changes are listed on the agenda:

Name	Personnel Action	Position FTE	Position	School or Dept.	Effective Date
Anderson, Kortnie	100% Unpaid LOA	.375	Student Services Secretary	Marina Village	5/30/2023
Kynett, Caitlin	Employment	.4375	Certified Occupational Therapist Assistant	District Office	8/8/2023
Patterson, Jeremiah	Employment	1.0	Lead Maintenance Technician - HVAC	Maintenance	6/5/2023
Ashurst, Kelly	Resignation	1.0	School Secretary	Pleasant Grove	6/14/2023
McGready, Steven	Resignation	1.0	Lead Custodian	Pleasant Grove	6/12/2023
Vasquez, Kristina	Resignation	.4672	Yard Supervisor	Lakeview	5/26/2023

**FISCAL IMPACT:**

Fiscal impact will be reflected in the 2022-2023 and 2023-2024 budget years.

**BOARD GOAL:**

Board Focus Goal IV – STAFF NEEDS:

Attract and retain diverse, knowledgeable, dedicated employees who are skilled and supported in their commitment to providing quality education for our students.

**RESCUE UNION SCHOOL DISTRICT**

**AGENDA ITEM:**      **AB-181 DEPARTMENT OF REAL ESTATE SUBDIVISION  
"WHITE PAPER" RESPONSE AND  
STUDENT YIELD IMPACT ANALYSIS  
Ncngulf g'GucvguVqy pj qo gu  
Advertising Name: Ncngulf g'GucvguVqy pj qo gu**

**RECOMMENDATION:**

The Superintendent recommends the Board of Trustees approve the response statement for the proposed development as outlined in this report.

**BACKGROUND:**

Changes in the law promulgated by AB 181, as of October 1, 1989, all subdivisions in the State of California must include a statement regarding the availability of schools in their Department of Real Estate (DRE) "White Report". We have received a request for such a statement (see attached letter from consulting company). At their request, we have prepared a response.

It is required by law that the response provided must be approved by the Board of Education during a public meeting (consent item is appropriate). Because this approval is required by law, the DRE will require that a copy of the Board's approval action be submitted along with the response to each individual project.

**STATUS:**

The DRE "White Report" for the following development has been submitted to the district for review and action by the Board of Trustees (copy enclosed):

**Ncngulf g'GucvguVqy pj qo gu  
Location: El Dorado County, California**

The Rescue Union School District has established a .271 student yield factor per single-family unit. Accordingly, staff estimates the District can expect there will be 3.25 students generated from this subdivision.

The Rescue Union School District has the capacity to house students at both the elementary and middle school levels. This capacity may not be within the students' current school attendance boundaries.

**FISCAL IMPACT:**

None at this time.

**BOARD GOAL:**

Board Focus Goal V - FACILITY/HOUSING:

Build, improve and maintain school facilities to meet current and future educational needs while integrating the most effective and efficient use of resources.



**RESCUE UNION SCHOOL DISTRICT**

*"Educating for the Future Together"*

2390 Bass Lake Road • Rescue, CA 95672

(530) 677-4461 • FAX (530) 677-0719

[www.rescueusd.org](http://www.rescueusd.org)

---

June 6, 2023

Pa Yang  
California Builder Services  
1446 Tollhouse Road  
Suite 101  
Clovis, CA 93611  
[pa@cabuilderservices.com](mailto:pa@cabuilderservices.com)

Re: Name: Lakeside Estates Townhomes  
Advertising Name: N/A

Dear Pa Yang,

The Statement of School Availability letter is being sent in response to your request for information regarding the status of school availability in the Rescue Union School District.

The Rescue Union School District has two schools which serve the project area. The address and phone number for each site is listed here:

Rescue Elementary School  
Grades TK-5  
3880 Green Valley Rd  
Rescue, CA 95672  
(530) 677-2720

Pleasant Grove Middle School  
Grades 6-8  
2540 Green Valley Rd  
Rescue, CA 95672  
(530) 672-4400

School attendance boundaries have been established by the district but are subject to change, and availability of neighborhood schools may be impacted by student enrollment. Potential purchasers should contact the school district directly at (530) 677-4461 for current information regarding the school they will attend at the time of purchase.

Rescue Union School District requests that you furnish the complete Statement of School Availability Report to all prospective purchasers of residences within the above-mentioned development.

Sincerely,

Lisa Donaldson  
Assistant Superintendent of Business Services

Jim Shoemake, Superintendent

***Board of Trustees***

*Michael Gordon • Kim White • Michelle Bebout • Jamie Hunter • Michael Flaherty*



Cameron Park Lake

Lakeside Estates

Calido Ct

Cambridge Rd

Spill Way

Estepa Dr

El Tejon Rd

Google Earth

© 2021 Google  
© 2021 Europa Technologies

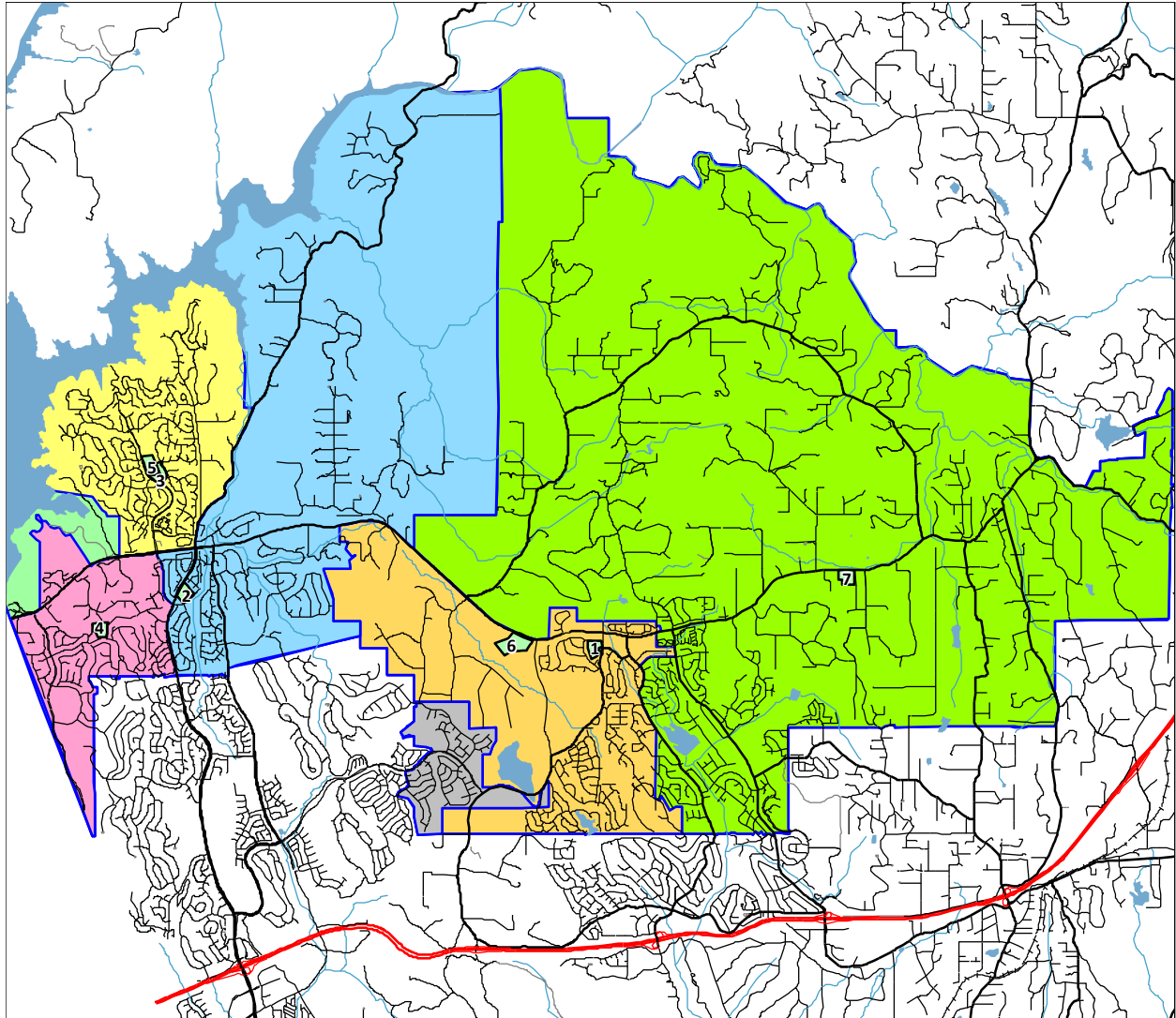
500 ft



# Rescue Union School District

## 2022/23 Demographics and Enrollment Projections

### School Locations and Elementary Boundaries



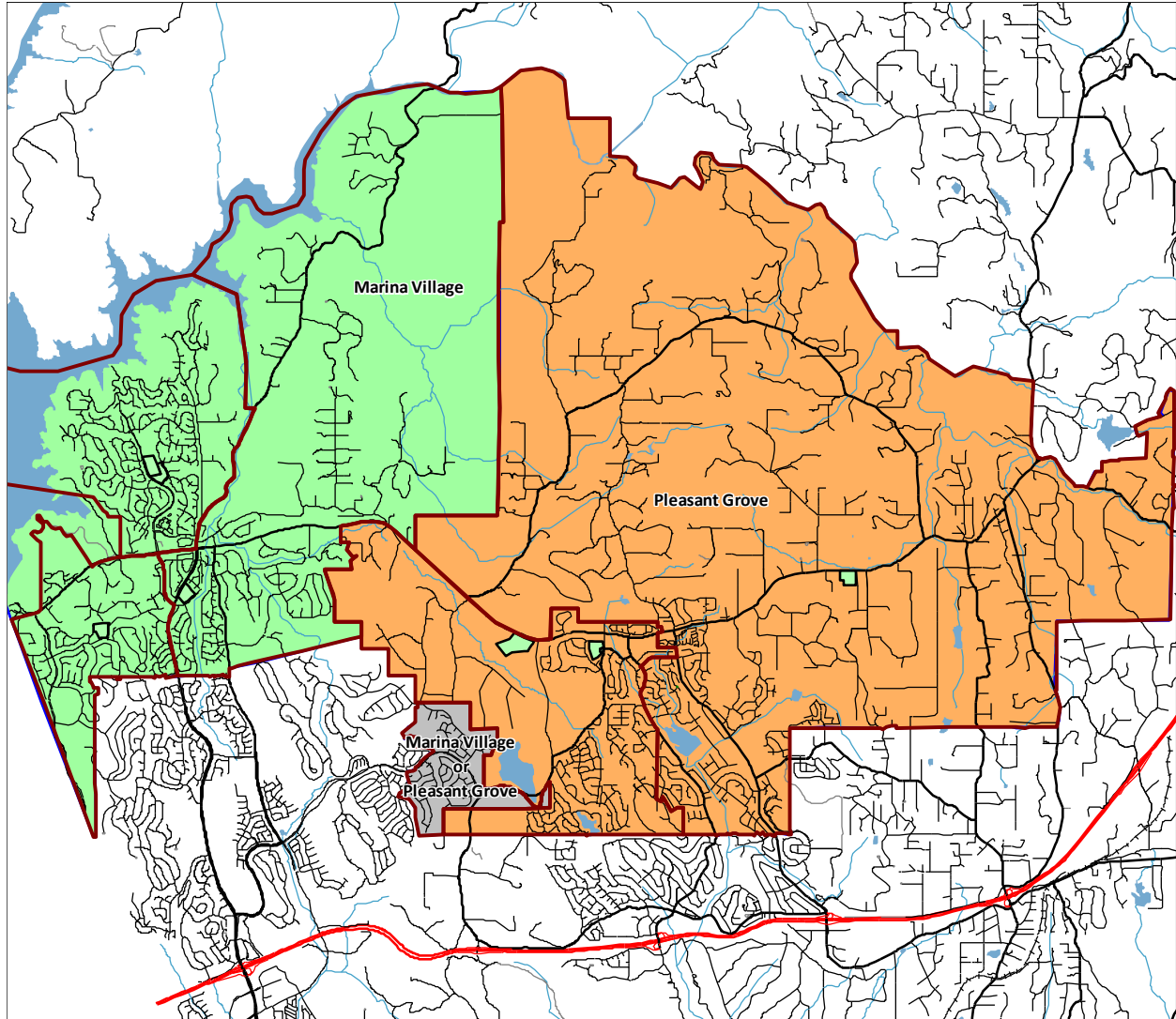
<u>Id</u>	<u>School</u>	<u>Grades</u>	<u>Id</u>	<u>School</u>	<u>Grades</u>
1	Green Valley Elementary	TK-5	5	Marina Village Middle	6-8
2	Jackson Elementary	TK-5	6	Pleasant Grove Middle	6-8
3	Lake Forest Elementary	TK-5	7	Rescue Elementary	TK-5
4	Lakeview Elementary	TK-5			

DRAFT

# Rescue Union School District

## 2022/23 Demographics and Enrollment Projections

### Middle School Boundaries and Elementary Feeders



**Middle School**  
Marina Village

**Elementary Feeders**  
Jackson  
Lake Forest  
Lakeview

**Middle School**  
Pleasant Grove

**Elementary Feeders**  
Green Valley  
Rescue

DRAFT

# Rescue Union School District

## 2022/23 Demographics and Enrollment Projections

### Enrollment Projection Summary by Grade

The chart below shows three years of historic enrollment, the current enrollment, and six years of projected enrollment by grade.

Rescue Union School District Enrollment Projection Summary by Grade										
Grade	Historic Enrollment			Current Enrollment	Projected Enrollment					
	<u>19/20</u>	<u>20/21</u>	<u>21/22</u>	<u>22/23</u>	<u>23/24</u>	<u>24/25</u>	<u>25/26</u>	<u>26/27</u>	<u>27/28</u>	<u>28/29</u>
TK	93	87	83	92	174	215	285	284	283	283
K	339	318	359	326	350	343	332	331	330	329
1	374	330	356	389	340	363	356	345	345	345
2	355	367	371	367	413	363	386	379	369	369
3	370	351	373	376	371	417	367	390	384	374
4	371	381	381	382	379	373	419	370	393	388
5	387	380	415	377	384	381	375	421	373	396
6	401	379	378	420	384	390	388	382	428	379
7	453	400	408	368	424	389	395	393	388	434
8	460	429	439	386	353	407	372	378	377	372
Total TK-5	2,289	2,214	2,338	2,309	2,411	2,455	2,520	2,520	2,477	2,484
Total 6-8	1,314	1,208	1,225	1,174	1,161	1,186	1,155	1,153	1,193	1,185
District Totals	3,603	3,422	3,563	3,483	3,572	3,641	3,675	3,673	3,670	3,669

### Enrollment Projection Summary by School

Rescue Union School District Enrollment Projection Summary by School							
School	Current Enrollment						
	<u>22/23</u>	<u>23/24</u>	<u>24/25</u>	<u>25/26</u>	<u>26/27</u>	<u>27/28</u>	<u>28/29</u>
Green Valley Elem	350	384	416	435	441	442	460
Jackson Elem	460	465	469	485	483	475	473
Lake Forest Elem	456	471	470	458	448	428	415
Lakeview Elem	543	561	567	576	574	572	577
Rescue Elem	502	530	533	566	574	560	559
<b>Elementary Totals</b>	<b>2,311</b>	<b>2,411</b>	<b>2,455</b>	<b>2,520</b>	<b>2,520</b>	<b>2,477</b>	<b>2,484</b>
Marina Village Middle	665	656	668	650	650	655	632
Pleasant Grove Middle	507	505	518	505	503	538	553
<b>Middle Totals</b>	<b>1,172</b>	<b>1,161</b>	<b>1,186</b>	<b>1,155</b>	<b>1,153</b>	<b>1,193</b>	<b>1,185</b>
<b>District Totals</b>	<b>3,483</b>	<b>3,572</b>	<b>3,641</b>	<b>3,675</b>	<b>3,673</b>	<b>3,670</b>	<b>3,669</b>
Annual Change		89	69	34	-2	-3	-1

DRAFT

**RESCUE UNION SCHOOL DISTRICT**

**AGENDA ITEM:**      **AB-181 DEPARTMENT OF REAL ESTATE SUBDIVISION  
"WHITE PAPER" RESPONSE AND  
STUDENT YIELD IMPACT ANALYSIS  
Vineyards at El Dorado Hills  
Advertising Name: Hill View Estates**

**RECOMMENDATION:**

The Superintendent recommends the Board of Trustees approve the response statement for the proposed development as outlined in this report.

**BACKGROUND:**

Changes in the law promulgated by AB 181, as of October 1, 1989, all subdivisions in the State of California must include a statement regarding the availability of schools in their Department of Real Estate (DRE) "White Report". We have received a request for such a statement (see attached letter from consulting company). At their request, we have prepared a response.

It is required by law that the response provided must be approved by the Board of Education during a public meeting (consent item is appropriate). Because this approval is required by law, the DRE will require that a copy of the Board's approval action be submitted along with the response to each individual project.

**STATUS:**

The DRE "White Report" for the following development has been submitted to the district for review and action by the Board of Trustees (copy enclosed):

**Vineyards at El Dorado Hills/Hill View Estates  
Location: El Dorado County, California**

The Rescue Union School District has established a .271 student yield factor per single-family unit. Accordingly, staff estimates the District can expect there will be 11.38 students generated from this subdivision.

The Rescue Union School District has the capacity to house students at both the elementary and middle school levels. This capacity may not be within the students' current school attendance boundaries.

**FISCAL IMPACT:**

None at this time.

**BOARD GOAL:**

Board Focus Goal V - FACILITY/HOUSING:

Build, improve and maintain school facilities to meet current and future educational needs while integrating the most effective and efficient use of resources.



RESCUE UNION SCHOOL DISTRICT

*"Educating for the Future Together"*

2390 Bass Lake Road • Rescue, CA 95672

(530) 677-4461 • FAX (530) 677-0719

[www.rescueusd.org](http://www.rescueusd.org)

---

June 20, 2023

Krystle Erspamer  
First American Title  
3400 Douglas Blvd.  
Suite 130  
Roseville, CA 95661  
kerspamer@firstam.com

Re: Name: Vineyards at El Dorado Hills/Hill View Estates  
Advertising Name: Hill View Estates

Dear Krystle,

The Statement of School Availability letter is being sent in response to your request for information regarding the status of school availability in the Rescue Union School District.

The Rescue Union School District has two schools which serve the project area. The address and phone number for each site is listed here:

Jackson Elementary School  
Grades TK-5  
2561 Francisco Drive  
Rescue, CA 95672  
(916) 933-1828

Marina Village Middle School  
Grades 6-8  
1901 Francisco Drive  
Rescue, CA 95672  
(916) 933-3993

School attendance boundaries have been established by the district but are subject to change, and availability of neighborhood schools may be impacted by student enrollment. Potential purchasers should contact the school district directly at (530) 677-4461 for current information regarding the school they will attend at the time of purchase.

Rescue Union School District requests that you furnish the complete Statement of School Availability Report to all prospective purchasers of residences within the above-mentioned development.

Sincerely,

Lisa Donaldson  
Assistant Superintendent of Business Services

Jim Shoemake, Superintendent

*Board of Trustees*

*Michael Gordon • Kim White • Michelle Bebout • Jamie Hunter • Michael Flaherty*

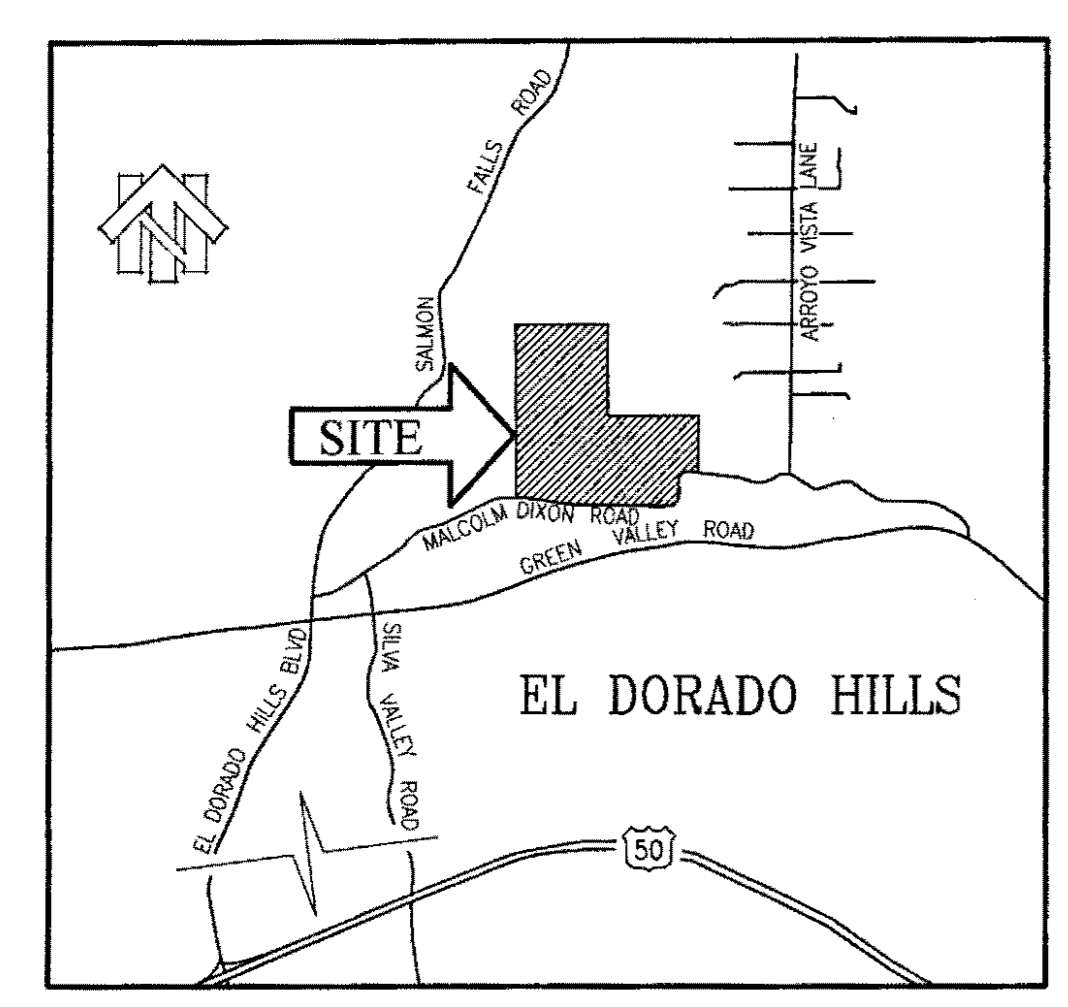
# TENTATIVE SUBDIVISION MAP

## VINEYARDS AT EL DORADO HILLS

COUNTY OF EL DORADO

MARCH, 2016

STATE OF CALIFORNIA



VICINITY MAP  
NOT TO SCALE

### OWNER OF RECORD

OWNI FINANCIAL A CA LLC  
1260 41ST AVE STE 0  
CAPITOLA, CA 95010

### ENGINEER

**cta** Engineering & Surveying  
Civil Engineering Land Surveying Land Planning  
3233 Monterey Circle, Rancho Cordova, CA 95742  
T (916) 838-0815 F (916) 838-2479 www.cta.net

### MAP SCALE

1" = 100'

### CONTOUR INTERVAL

CONTOUR INTERVAL = 1 FEET

### SOURCE OF TOPOGRAPHY

(AERIAL PHOTOGRAPHY/TOPOGRAPHIC SURVEY)

### SECTION, TOWNSHIP, RANGE

SECTION 14, T.10N., R.8E., M.D.M.

### ASSESSOR'S PARCELS

A.P.N. 126-100-24

### EXISTING / PROP. ZONING

RE-5 / RE-5 PD

### TOTAL AREA

114.030 ACRES

### TOTAL NO. of LOTS

42 SINGLE FAMILY LOTS (INCLUDING ROADS)..... 42.23 AC  
1 ROADWAY LOT ..... 6.22 AC  
5 OPEN SPACE LOTS ..... 65.58 AC  
TOTAL AREA ..... 114.03 AC

### MINIMUM LOT AREA

43,560 SQUARE FEET

### WATER SUPPLY and SEWAGE DISPOSAL

WATER - EL DORADO IRRIGATION DISTRICT  
SEWER - ON SITE SEPTIC

### PROPOSED STRUCTURAL FIRE PROTECTION

EL DORADO HILLS COUNTY WATER DISTRICT

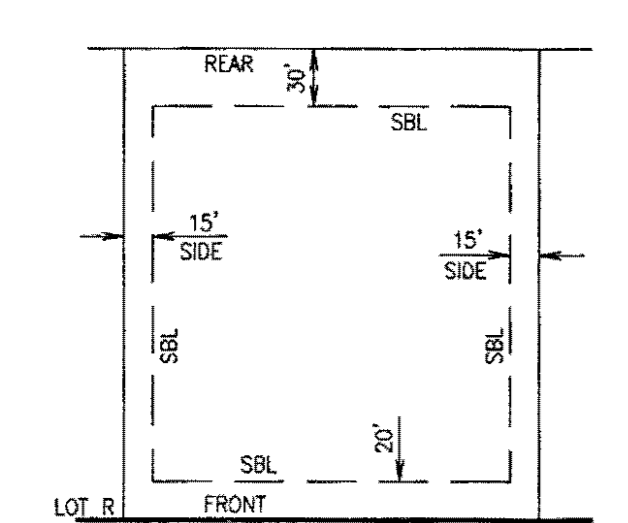
### PHASING PLAN NOTICE

THE SUBDIVIDER MAY FILE MULTIPLE FINAL MAPS FOR THIS PROJECT. THE SUBDIVIDER SHALL NOT BE REQUIRED TO DEFINE THE NUMBER OR CONFIGURATION OF THE PROPOSED MULTIPLE FINAL MAPS. (PER THE SUBDIVISION MAP ACT, SECTION 66456.1)

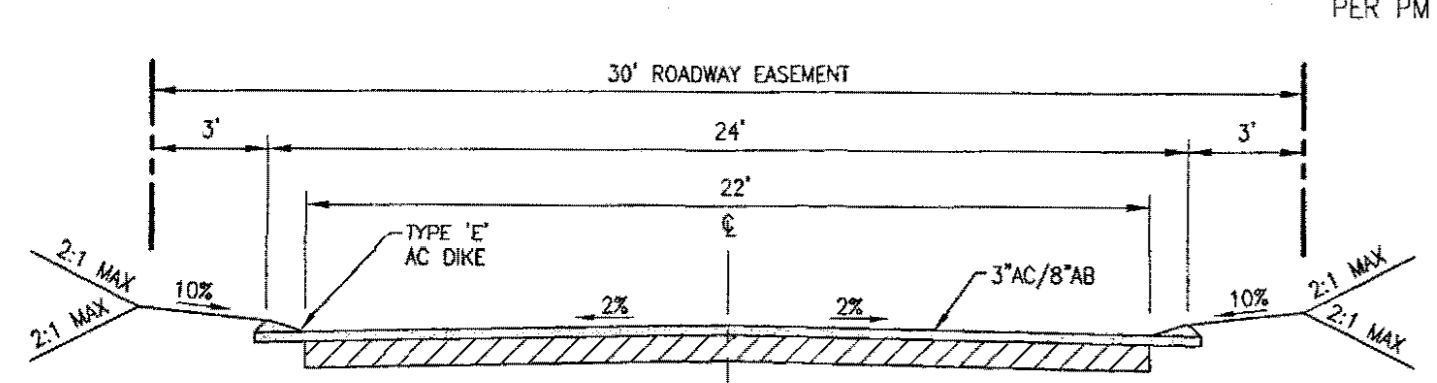
### ENGINEER'S CERTIFICATE

I HEREBY CERTIFY THAT TO THE BEST OF MY KNOWLEDGE THE LAND DEVELOPMENT KNOWN AS "VINEYARDS AT EL DORADO HILLS" HAS BEEN DESIGNED IN ACCORDANCE WITH THE SPECIFICATIONS AND GUIDELINES ESTABLISHED BY THE COUNTY OF EL DORADO.

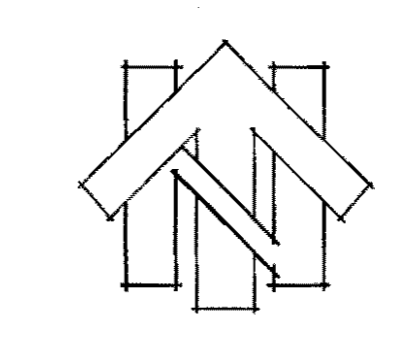
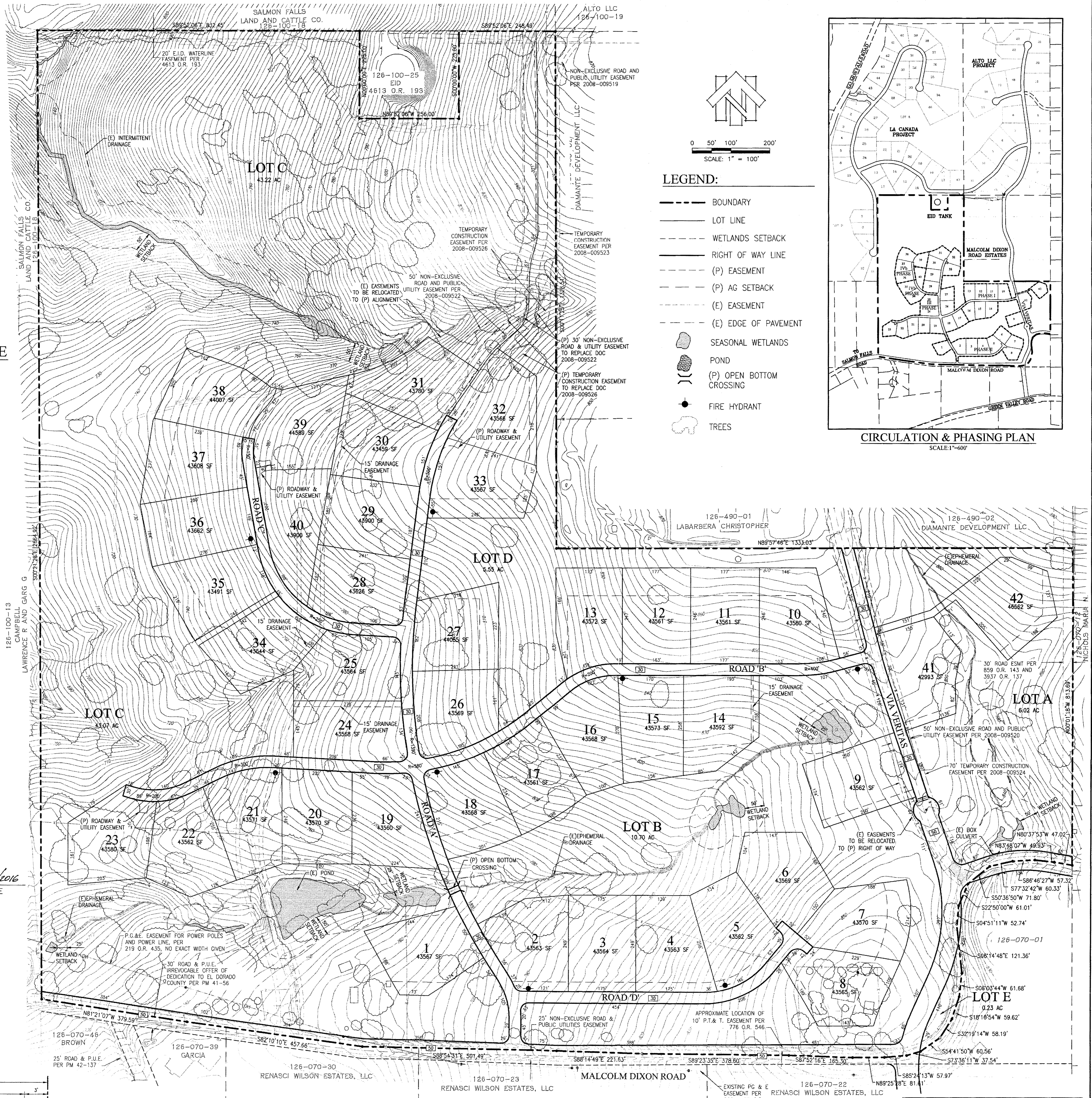
*Olga Scorelli*  
OLGA SCORELLI P.E. 71204 5/1/2016  
REGISTERED PROFESSIONAL ENGINEER  
71204  
Exp. 6-30-17  
STATE OF CALIFORNIA



TYP. BUILDING SETBACKS  
NOT TO SCALE



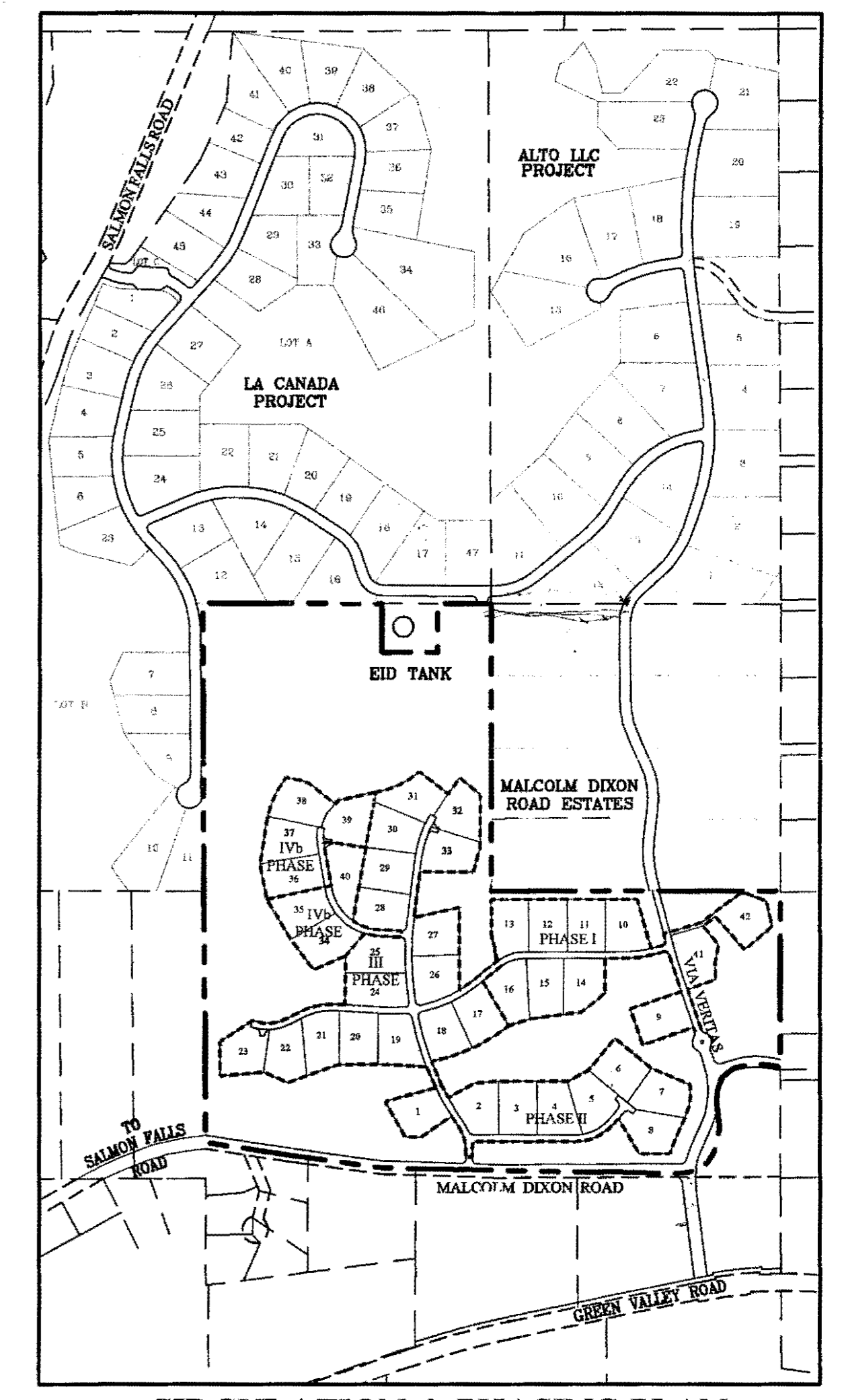
TYPICAL ROAD SECTION (101 C)  
SCALE: 1"=5'



0 50' 100' 200'  
SCALE: 1" = 100'

### LEGEND:

- BOUNDARY
- LOT LINE
- WETLANDS SETBACK
- RIGHT OF WAY LINE
- (P) EASEMENT
- (P) AG SETBACK
- (E) EASEMENT
- (E) EDGE OF PAVEMENT
- SEASONAL WETLANDS
- POND
- (P) OPEN BOTTOM CROSSING
- FIRE HYDRANT
- TREES



CIRCULATION & PHASING PLAN  
SCALE: 1"=600'

PLANNING COMMISSION: \_\_\_\_\_  
APPROVAL/DENIAL DATE: \_\_\_\_\_  
  
BOARD OF SUPERVISORS: \_\_\_\_\_  
APPROVAL/DENIAL DATE: \_\_\_\_\_

## OWNER'S STATEMENT

THE UNDERSIGNED OWNER OF RECORD TITLE INTEREST HEREBY CONSENTS TO THE PREPARATION AND FILING OF THIS MAP AND HEREBY CONVEYS AND OFFERS FOR DEDICATION TO THE COUNTY OF EL DORADO LOT R, (A.K.A. MALCOLM DIXON ROAD) AS SHOWN HEREON, INCLUDING THE UNDERLYING FEE THEREOF FOR ANY AND ALL PUBLIC PURPOSES.

THE UNDERSIGNED OWNER ALSO HEREBY OFFERS TO THE COUNTY OF EL DORADO, ON BEHALF OF THE PUBLIC, THE FOLLOWING EASEMENTS FOR THOSE CERTAIN COMPANIES AND PUBLIC ENTITIES, WHICH WILL PROVIDE SERVICES:

A. PUBLIC UTILITY EASEMENTS FOR OVERHEAD AND UNDERGROUND WIRES, CONDUITS, PIPELINES, POLES, GUY WIRES, ANCHORS AND APPURTENANT FIXTURES, WITH THE RIGHT TO TRIM AND REMOVE LIMBS, TREES AND BRUSH THEREFROM, OVER, UNDER AND ACROSS THE STREETS AND OTHER PUBLIC WAYS SHOWN OR CONVEYED HEREON, TOGETHER WITH THE 12.5' ADJACENT TO LOT LL-R (MALCOLM DIXON ROAD). THE P.U.E.'S HEREBY OFFERED FOR DEDICATION ARE TO BE KEPT OPEN AND FREE OF BUILDINGS, STRUCTURES AND WELLS OF ANY KIND.

B. RIGHTS OF ACCESS OVER AND ACROSS ANY PORTION OF LOT R AND THOSE STRIPS OF LAND DELINEATED AS PUBLIC UTILITY EASEMENTS (P.U.E.) HEREON FOR THE PURPOSE OF INSPECTING, MAINTAINING OR REPLACING ON SITE FACILITIES.

C. POSTAL EASEMENTS, FIVE FEET (5') ADJACENT TO LOT R (MALCOLM DIXON ROAD).

ALL OFFERS MADE HEREIN ARE IRREVOCABLE AND SHALL REMAIN OPEN IN PERPETUITY DESPITE A REJECTION OF SUCH OFFER BY THE APPLICABLE PUBLIC ENTITY.

OMNI FINANCIAL, LLC  
A CALIFORNIA LIMITED LIABILITY COMPANY

BY: Martin Boone  
NAME: MARTIN BOONE  
TITLE: MANAGER

## NOTARY ACKNOWLEDGMENT

A NOTARY PUBLIC OR OTHER OFFICER COMPLETING THIS CERTIFICATE VERIFIES ONLY THE IDENTITY OF THE INDIVIDUAL WHO SIGNED THE DOCUMENT TO WHICH THIS CERTIFICATE IS ATTACHED, AND NOT THE TRUTHFULNESS, ACCURACY, OR VALIDITY OF THAT DOCUMENT.

STATE OF CALIFORNIA )  
COUNTY OF Santa Cruz ) SS  
ON August 16, 2022 BEFORE ME, Nicole Owens,  
NOTARY PUBLIC,

PERSONALLY APPEARED Martin Boone, WHO PROVED TO ME ON THE BASIS OF SATISFACTORY EVIDENCE, TO BE THE PERSON WHOSE NAME IS SUBSCRIBED TO THE WITHIN INSTRUMENT AND ACKNOWLEDGED TO ME THAT HE EXECUTED THE SAME IN HIS AUTHORIZED CAPACITIES, AND THAT BY HIS SIGNATURES ON THE INSTRUMENT THE PERSON, OR THE ENTITY UPON BEHALF OF WHICH THE PERSON ACTED, EXECUTED THE INSTRUMENT.

I CERTIFY UNDER PENALTY OF PERJURY UNDER THE LAWS OF THE STATE OF CALIFORNIA THAT THE FOREGOING PARAGRAPH IS TRUE AND CORRECT.

WITNESS MY HAND AND OFFICIAL SEAL.

PRINCIPLE COUNTY OF BUSINESS Santa Cruz  
COMMISSION NO: 2386207  
NAME Nicole Owens COMMISSION EXPIRES: January 7, 2026

## SURVEYOR'S STATEMENT

THIS MAP WAS PREPARED BY ME OR UNDER MY DIRECTION, THE SURVEY IS TRUE AND COMPLETE AND IS BASED UPON A FIELD SURVEY IN CONFORMANCE WITH THE REQUIREMENTS OF THE SUBDIVISION MAP ACT AND LOCAL ORDINANCES AT THE REQUEST OF OMNI FINANCIAL, LLC IN AUGUST, 2021. I HEREBY STATE THAT THIS FINAL MAP SUBSTANTIALLY CONFORMS TO THE CONDITIONALLY APPROVED TENTATIVE MAP AND THAT THE MONUMENTS WILL BE OF THE CHARACTER AND WILL BE SET BY DECEMBER, 2022 THAT SAID MONUMENTS WILL BE SUFFICIENT TO ENABLE THE SURVEY TO BE RETRACED.

DATE: AUGUST 16, 2022

Kevin A. Heeney  
KEVIN A. HEENEY  
LS 5914



## TRUSTEE'S STATEMENT

THE UNDERSIGNED AS TRUSTEE UNDER DEED OF TRUST, RECORDED SEPTEMBER 27, 2012 AS INSTRUMENT NO. 2012-0049137, OFFICIAL RECORDS OF EL DORADO COUNTY, HEREBY CONSENT TO THE PREPARATION AND FILING OF THIS MAP.

UNITED SECURITY BANK

NAME \_\_\_\_\_  
TITLE \_\_\_\_\_

## NOTARY ACKNOWLEDGMENT

A NOTARY PUBLIC OR OTHER OFFICER COMPLETING THIS CERTIFICATE VERIFIES ONLY THE IDENTITY OF THE INDIVIDUAL WHO SIGNED THE DOCUMENT TO WHICH THIS CERTIFICATE IS ATTACHED, AND NOT THE TRUTHFULNESS, ACCURACY, OR VALIDITY OF THAT DOCUMENT.

STATE OF CALIFORNIA )  
COUNTY OF \_\_\_\_\_ ) SS  
ON \_\_\_\_\_, BEFORE ME, \_\_\_\_\_, A  
NOTARY PUBLIC,

PERSONALLY APPEARED \_\_\_\_\_, WHO PROVED TO ME ON THE BASIS OF SATISFACTORY EVIDENCE, TO BE THE PERSON WHOSE NAME IS SUBSCRIBED TO THE WITHIN INSTRUMENT AND ACKNOWLEDGED TO ME THAT HE EXECUTED THE SAME IN HIS AUTHORIZED CAPACITIES, AND THAT BY HIS SIGNATURES ON THE INSTRUMENT THE PERSON, OR THE ENTITY UPON BEHALF OF WHICH THE PERSON ACTED, EXECUTED THE INSTRUMENT.

I CERTIFY UNDER PENALTY OF PERJURY UNDER THE LAWS OF THE STATE OF CALIFORNIA THAT THE FOREGOING PARAGRAPH IS TRUE AND CORRECT.

WITNESS MY HAND AND OFFICIAL SEAL.

PRINCIPLE COUNTY OF BUSINESS \_\_\_\_\_  
COMMISSION NO: \_\_\_\_\_  
COMMISSION EXPIRES: \_\_\_\_\_

## COUNTY SURVEYOR'S STATEMENT

I HAVE EXAMINED THE MAP, THE SUBDIVISION AS SHOWN IS SUBSTANTIALLY THE SAME AS IT APPEARED ON THE TENTATIVE MAP, IF REQUIRED, AND ANY APPROVED ALTERATIONS THEREOF. ALL PROVISIONS OF CHAPTER 2 OF THE SUBDIVISION MAP ACT AND OF ANY LOCAL ORDINANCES APPLICABLE AT THE TIME OF APPROVAL OF THE TENTATIVE MAP, IF REQUIRED, HAVE BEEN COMPLIED WITH. I AM SATISFIED THAT THE MAP IS TECHNICALLY CORRECT.

DATE: 8-25-22

Brian K. Frazier  
BRIAN K. FRAZIER, P.L.S. 9190  
COUNTY SURVEYOR  
COUNTY OF EL DORADO, CALIFORNIA



BY: Justin Cisneros, P.L.S. 9539  
DEPUTY SURVEYOR  
COUNTY OF EL DORADO, CALIFORNIA

## COUNTY ENGINEER'S STATEMENT

I, ADAM BANE, HEREBY STATE THAT THERE ARE NO IMPROVEMENTS REQUIRED AT THIS TIME, AND THAT THE ROADS SHOWN HEREON SHALL BE CONSTRUCTED WITH THE FILING OF EACH SUBSEQUENT FINAL MAP.

DATE: 8-25-22

Adam Bane  
ADAM BANE, R.C.E. 61363  
COUNTY ENGINEER  
COUNTY OF EL DORADO, CALIFORNIA



# LARGE LOT FINAL MAP OF VINEYARDS AT EL DORADO HILLS

A PORTION OF THE SOUTHEAST ONE-QUARTER OF  
SEC. 14, TOWNSHIP 10 NORTH, RANGE 8 EAST, M.D.M.

COUNTY OF EL DORADO STATE OF CALIFORNIA  
SCALE: NA AUGUST, 2022

cta Engineering & Surveying

SHEET 1 OF 5

## PLANNING AND BUILDING DIRECTOR'S STATEMENT

I, KAREN L. GARNER, HEREBY STATE THAT THIS FINAL MAP CONFORMS SUBSTANTIALLY TO THE TENTATIVE MAP OF THIS SUBDIVISION APPROVED ON FEBRUARY 25, 2020 BY THE BOARD OF SUPERVISORS AND ANY APPROVED ALTERATIONS THEREOF AND THAT ALL CONDITIONS IMPOSED UPON SAID APPROVALS HAVE BEEN SATISFIED.

DATE: 8-25-22

Karen L. Garner  
KAREN L. GARNER  
DIRECTOR, PLANNING & BUILDING DEPARTMENT  
COUNTY OF EL DORADO, CALIFORNIA

BY: Julia J. Latta  
PRINCIPAL PLANNER  
COUNTY OF EL DORADO, CALIFORNIA

## COUNTY TAX COLLECTOR'S STATEMENT

I, KAREN E. COLEMAN, HEREBY STATE THAT, ACCORDING TO THE RECORDS OF THIS OFFICE, THERE ARE NO LIENS AGAINST THIS SUBDIVISION OR ANY PART THEREOF FOR UNPAID STATE, COUNTY, MUNICIPAL OR LOCAL TAXES OR SPECIAL ASSESSMENTS COLLECTED AS TAXES, EXCEPT TAXES OR SPECIAL ASSESSMENTS NOT YET PAYABLE, PROVIDED THAT THE FINAL MAP IS ACCEPTED FOR RECORD AND FILED PRIOR TO THE NEXT SUCCEEDING LIEN DATE.

DATE: 9/29/22

Karen E. Coleman  
KAREN E. COLEMAN  
TAX COLLECTOR  
COUNTY OF EL DORADO, CALIFORNIA

BY: Julia J. Latta  
DEPUTY

## BOARD CLERK'S STATEMENT

I, KIM DAWSON, HEREBY STATE THAT THE BOARD OF SUPERVISORS, BY ORDER ON 7/19/22, ADOPTED AND APPROVED THIS FINAL MAP OF THIS SUBDIVISION, AND ACCEPT SUBJECT TO IMPROVEMENTS FOR PUBLIC USES, LOT R (A.K.A. MALCOLM DIXON ROAD).

Kim Dawson  
KIM DAWSON  
CLERK OF THE BOARD OF SUPERVISORS  
COUNTY OF EL DORADO, CALIFORNIA

DATE: 10/14/22

BY: Kim Dawson  
DEPUTY



## COUNTY RECORDER'S CERTIFICATE

FILED THIS 27 DAY OF October, 2022 AT 10:01:33, IN BOOK K OF MAPS, AT  
PAGE 51, DOCUMENT NO. 1212-0041689 AT THE REQUEST OF OMNI FINANCIAL, LLC

TITLE TO THE LAND INCLUDED IN THIS SUBDIVISION IS GUARANTEED BY TITLE CERTIFICATE NO.

121216169 PREPARED BY cta TITLE COMPANY AND IS ON FILE IN THIS OFFICE.

Janelle K. Horne  
JANELLE K. HORNE  
COUNTY RECORDER - CLERK  
COUNTY OF EL DORADO, CALIFORNIA

BY: Umichale Whittall  
DEPUTY

K-57

# LARGE LOT FINAL MAP OF VINEYARDS AT EL DORADO HILLS

A PORTION OF THE SOUTHEAST ONE-QUARTER OF  
SEC. 14, TOWNSHIP 10 NORTH, RANGE 8 EAST, M.D.M.

COUNTY OF EL DORADO STATE OF CALIFORNIA

SCALE: 1"= 200' AUGUST, 2022

cta Engineering & Surveying

SHEET 2 OF 5

## LEGEND

- DIMENSION POINT, NOTHING FOUND OR SET
- ◊ FOUND SECTION CORNER AS NOTED
- ◊ FOUND QUARTER SECTION CORNER AS NOTED
- FOUND MONUMENT AS NOTED
- FOUND 3/4" C.I.P. STAMPED LS 5914
- ✕ FOUND 1 1/2" C.I.P. STAMPED LS 5914
- FOUND 5/8" REBAR W/ ALUMINUM CAP STAMPED LS 5914
- ✕ SET 3/4" C.I.P. STAMPED LS 5914
- ✕ SET 1 1/2" C.I.P. STAMPED LS 5914
- P.U.E. PUBLIC UTILITY EASEMENT
- (OA) OVERALL

## NOTES:

1. THIS SUBDIVISION CONTAINS 114.030 ACRES GROSS, CONSISTING OF 11 LARGE LOTS, AND IS CONSISTENT WITH THE TENTATIVE MAP 1M16-1520, APPROVED BY THE BOARD OF SUPERVISORS ON FEBRUARY 25, 2020.
2. ALL DISTANCES ALONG CURVED LINES ARE CHORD DISTANCES.
3. THE ROADS SHOWN HEREON ARE NON-EXCLUSIVE ROAD AND PUBLIC UTILITY EASEMENTS TO BE CONSTRUCTED WITH SUBSEQUENT PHASES AND FINAL MAPS AND ARE SUBJECT TO MODIFICATION WITH SUCH PHASES AND FINAL MAPS.
4. LOTS A, B, C & D ARE OPEN SPACE LOTS TO BE GRANTED TO THE HOMEOWNERS ASSOCIATION FORMED FOR THIS SUBDIVISION.
5. LOT R IS AN IRREVOCABLE OFFER OF DEDICATION IN FEE TO EL DORADO COUNTY PER DOC. 2019-0019753.
6. LOTS E & F ARE REMNANT PARCELS TO BE MERGED WITH ADJOINING PROPERTIES OR GRANTED TO THE HOMEOWNERS ASSOCIATION FORMED FOR THIS SUBDIVISION AS OPEN SPACE/LANDSCAPING LOTS.
7. THE PROPERTY SHOWN HEREON IS SUBJECT TO TEMPORARY CONSTRUCTION EASEMENTS, A JUDICIAL SETTLEMENT AGREEMENT AND A MEMORANDUM OF UNDERSTANDING FOR THE PRIVATE FUNDING OF THE MALCOLM DIXON AREA OF BENEFIT AS DISCLOSED IN DOCUMENT NUMBERS 2008-009524, 2008-009526, 2011-002735, 2019-0019754 AND 2019-0020254.. REFER TO THE RECORDED DOCUMENTS FOR THE LOCATION AND TERMS OF SAID EASEMENTS.

## NOTICE OF RESTRICTION

A NOTICE OF RESTRICTION RECORDED IN DOCUMENT NO. 2022-0041841 AFFECTS LOTS LL-1 THROUGH LL-4 AND LOT A THROUGH LOT F, LIMITING DEVELOPMENT TO PHASING AND FINANCING PURPOSES ONLY.

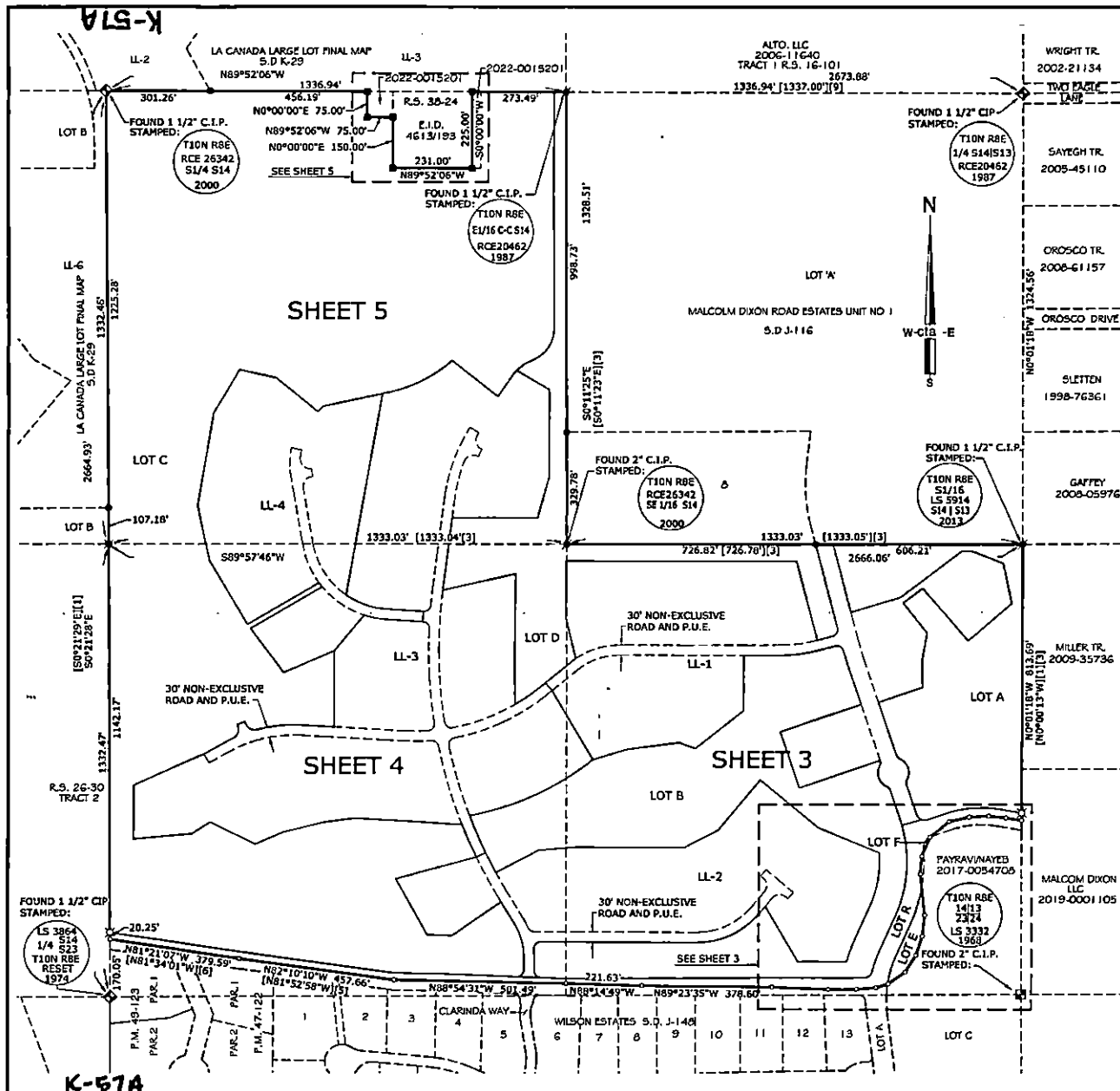
A NOTICE OF RESTRICTION RECORDED IN DOCUMENT NO. 2022-0041890 AFFECTS THE LOTS SHOWN HEREON FOR COMPLIANCE WITH THE WILDLAND FIRE SAFE PLAN PREPARED FOR THIS SUBDIVISION.

## BASIS OF BEARINGS

THE BASIS OF BEARINGS IS IDENTICAL WITH CERTAIN RECORD OF SURVEY RECORDED IN BOOK 25 OF SURVEYS, PAGE 30 AS DETERMINED BY MONUMENTS SHOWN AS FOUND HEREON, AND IS GRID NORTH.

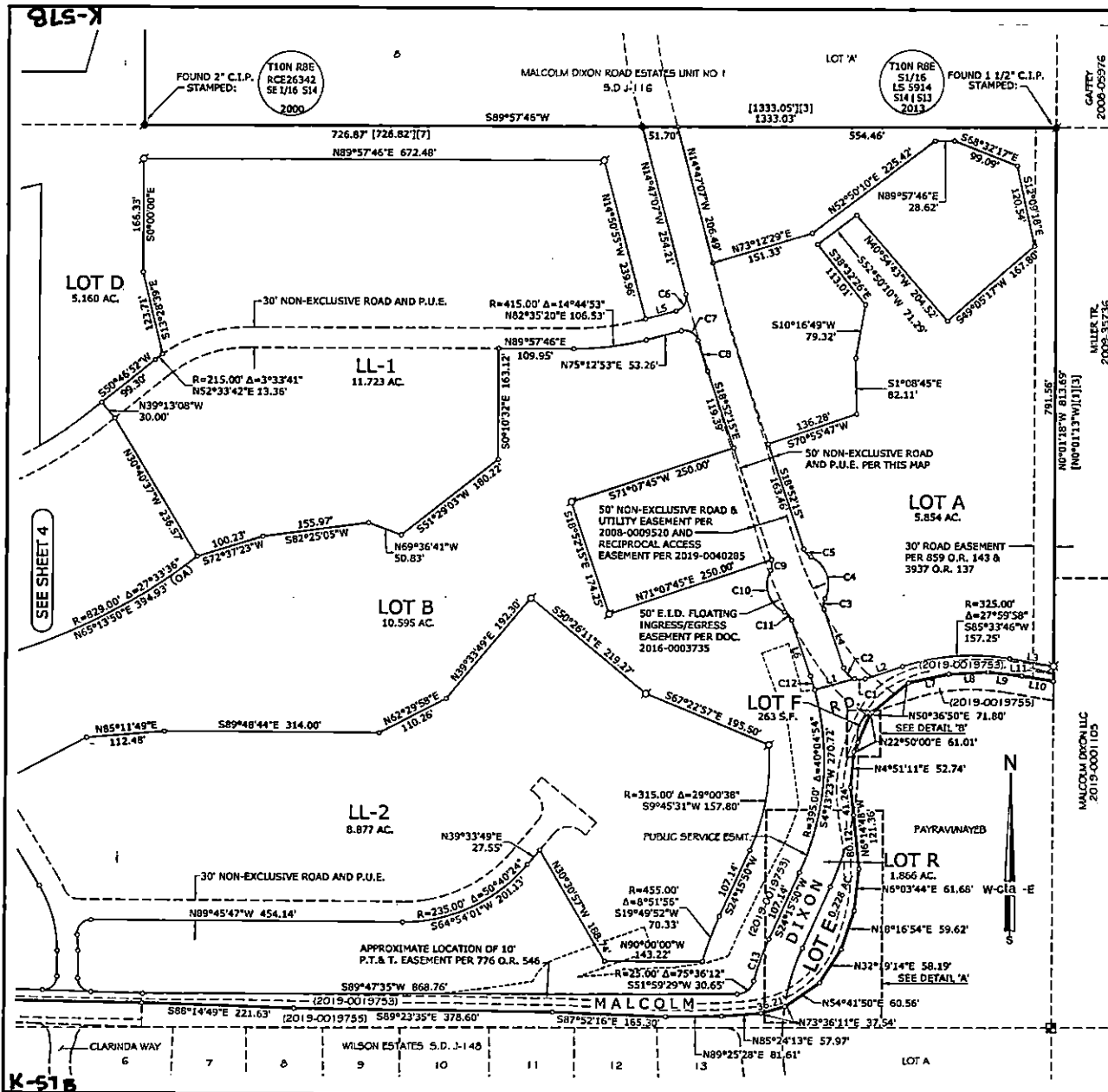
## REFERENCES

1. R.S. 16-101
2. R.S. 23-90
3. R.S. 25-30
4. R.S. 26-30
5. P.M. 47-122
6. P.M. 49-123
7. S.D. J-116 MALCOLM DIXON ROAD ESTATES #1
8. S.D. J-148 WILSON ESTATES
9. S.D. K-29 LA CANADA LARGE LOT MAP
10. R.S. 38-24



K-57A

K-51B



# LARGE LOT FINAL MAP OF VINEYARDS AT EL DORADO HILLS

A PORTION OF THE SOUTHEAST ONE-QUARTER OF  
SEC. 14, TOWNSHIP 10 NORTH, RANGE 8 EAST, M.D.M.  
COUNTY OF EL DORADO STATE OF CALIFORNIA  
SCALE: 1"= 100' AUGUST, 2022

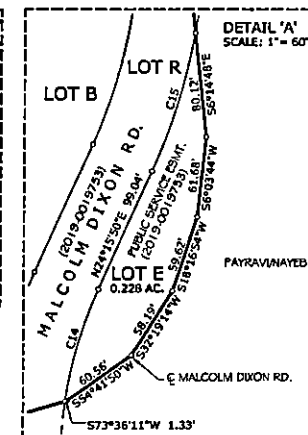
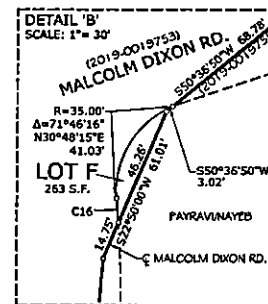
cta Engineering & Surveying

SHEET 3 OF 5

SEE SHEET 2 OF 5 FOR NOTES, LEGEND AND BASIS OF BEARINGS

CURVE	RADIUS	DELTA	CH. BEARING	CH. DIST.
C1	R=25.00'	Δ=37°07'03"	N89°52'41"W	15.91'
C2	R=25.00'	Δ=52°26'55"	S45°05'42"E	22.09'
C3	R=20.00'	Δ=46°11'13"	S4°13'22"W	15.69'
C4	R=45.00'	Δ=92°22'26"	S18°52'15"E	91.27'
C5	R=20.00'	Δ=46°11'13"	S41°57'51"E	15.69'
C6	R=20.00'	Δ=90°00'00"	S30°12'53"W	28.28'
C7	R=20.00'	Δ=88°34'21"	S60°29'57"E	27.93'
C8	R=1025.00'	Δ=2°39'29"	S17°32'30"E	47.55'
C9	R=20.00'	Δ=46°11'13"	S4°13'22"W	15.69'
C10	R=45.00'	Δ=92°22'26"	S18°52'15"E	64.94'
C11	R=20.00'	Δ=46°11'13"	S41°57'51"E	15.69'
C12	R=395.00'	Δ=3°03'11"	S17°20'39"E	21.05'
C13	R=375.00'	Δ=10°04'27"	S19°13'36"W	65.85'
C14	R=320.00'	Δ=16°05'30"	N16°17'05"E	89.58'
C15	R=445.00'	Δ=14°17'43"	N17°06'58"E	110.74'
C16	R=445.00'	Δ=1°12'06"	N4°28'50"W	9.33'

LINE	BEARING	DISTANCE
L1	S74°10'55"W	60.41'
L2	S71°33'47"W	57.47'
L3	N80°26'15"W	65.12'
L4	S18°52'15"E	91.27'
L5	S75°12'53"W	46.04'
L6	S18°52'15"E	86.83'
L7	N77°32'42"E	60.33'
L8	N86°46'27"E	57.32'
L9	S83°48'07"E	49.93'
L10	S60°37'53"E	47.02'
L11	S0°01'18"E	22.13'



K-51B

# LARGE LOT FINAL MAP OF VINEYARDS AT EL DORADO HILLS

A PORTION OF THE SOUTHEAST ONE-QUARTER OF  
SEC. 14, TOWNSHIP 10 NORTH, RANGE 8 EAST, M.D.M.  
COUNTY OF EL DORADO STATE OF CALIFORNIA  
SCALE: 1" = 100' AUGUST, 2022

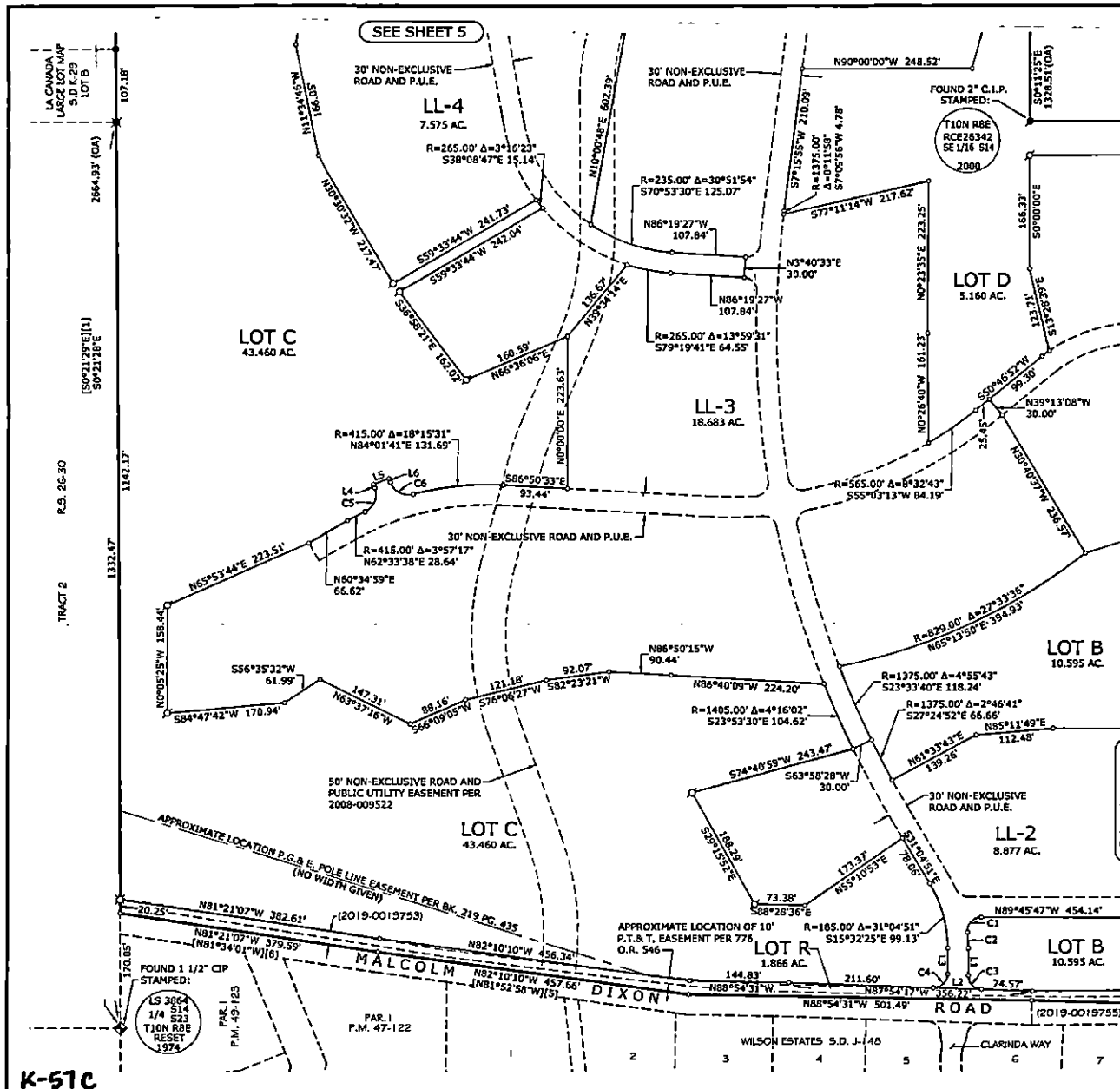
cta Engineering & Surveying

SHEET 4 OF 5

SEE SHEET 2 OF 5 FOR NOTES, LEGEND AND BASIS OF BEARINGS

CURVE DATA TABLE				
CURVE	RADIUS	DELTA	CH. BEARING	CH. DIST.
C1	R=20.00'	$\Delta=96^{\circ}27'35"$	S42°00'25"W	29.83'
C2	R=215.00'	$\Delta=6^{\circ}13'22"$	S3°06'41"E	23.34'
C3	R=20.00'	$\Delta=87^{\circ}54'17"$	S43°57'09"E	27.78'
C4	R=20.00'	$\Delta=92^{\circ}05'43"$	N46°02'51"E	28.80'
C5	R=28.00'	$\Delta=84^{\circ}49'10"$	N22°07'41"E	37.77'
C6	R=28.00'	$\Delta=84^{\circ}49'10"$	S62°41'29"E	37.77'

LINE DATA TABLE		
LINE	BEARING	DISTANCE
L1	SOUTH	40.64'
L2	N87°54'17"W	70.05'
L3	NORTH	38.08'
L4	N20°16'54"W	5.81'
L5	N69°43'06"E	24.00'
L6	S20°16'54"E	5.81'



K-57C

K-57C

# LARGE LOT FINAL MAP OF VINEYARDS AT EL DORADO HILLS

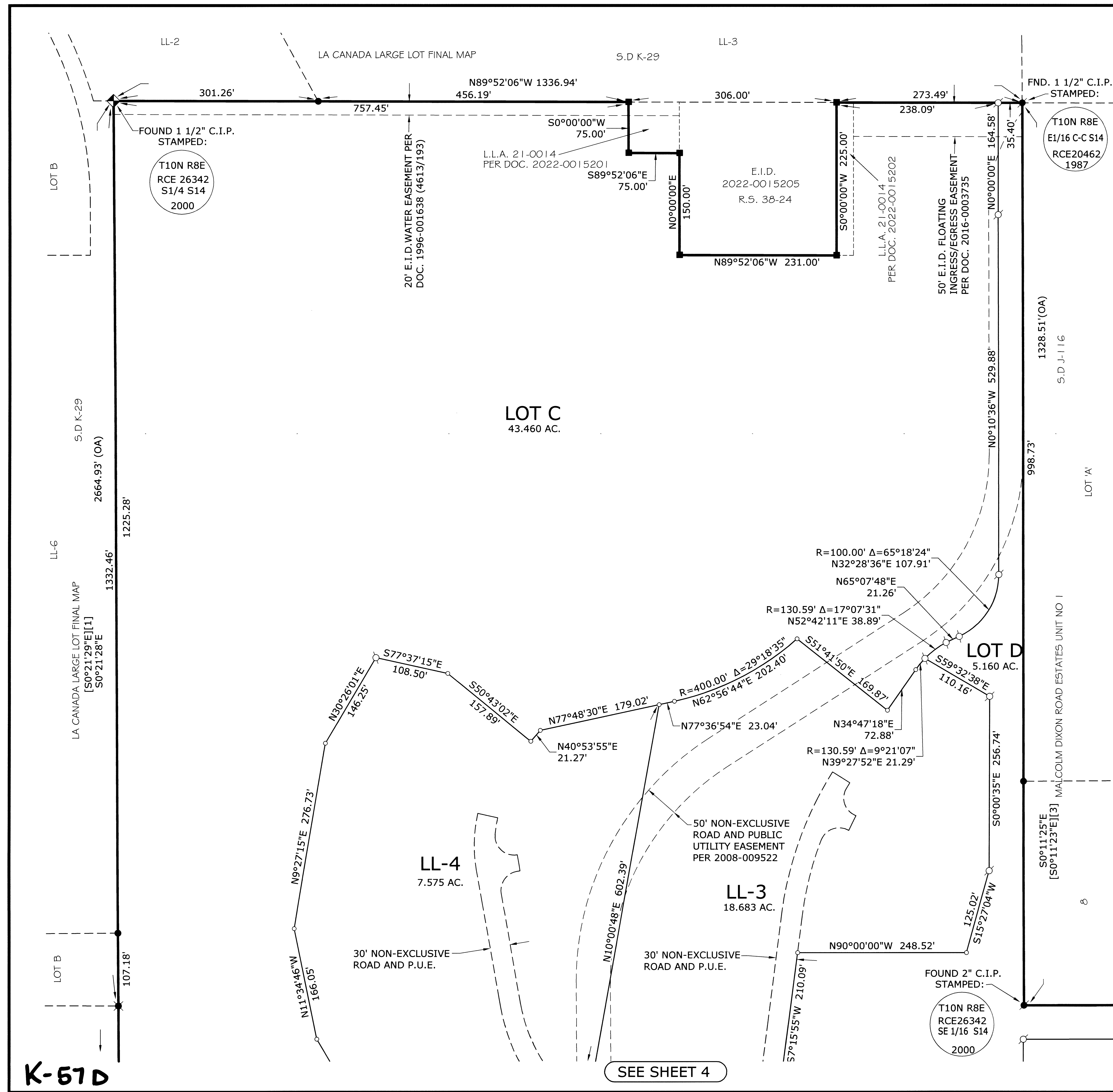
A PORTION OF THE SOUTHEAST ONE-QUARTER OF  
SEC. 14, TOWNSHIP 10 NORTH, RANGE 8 EAST, M.D.M.

COUNTY OF EL DORADO STATE OF CALIFORNIA  
SCALE: 1"= 100' AUGUST, 2022

cta Engineering & Surveying

SHEET 5 OF 5

SEE SHEET 2 OF 5 FOR NOTES, LEGEND AND BASIS OF BEARINGS



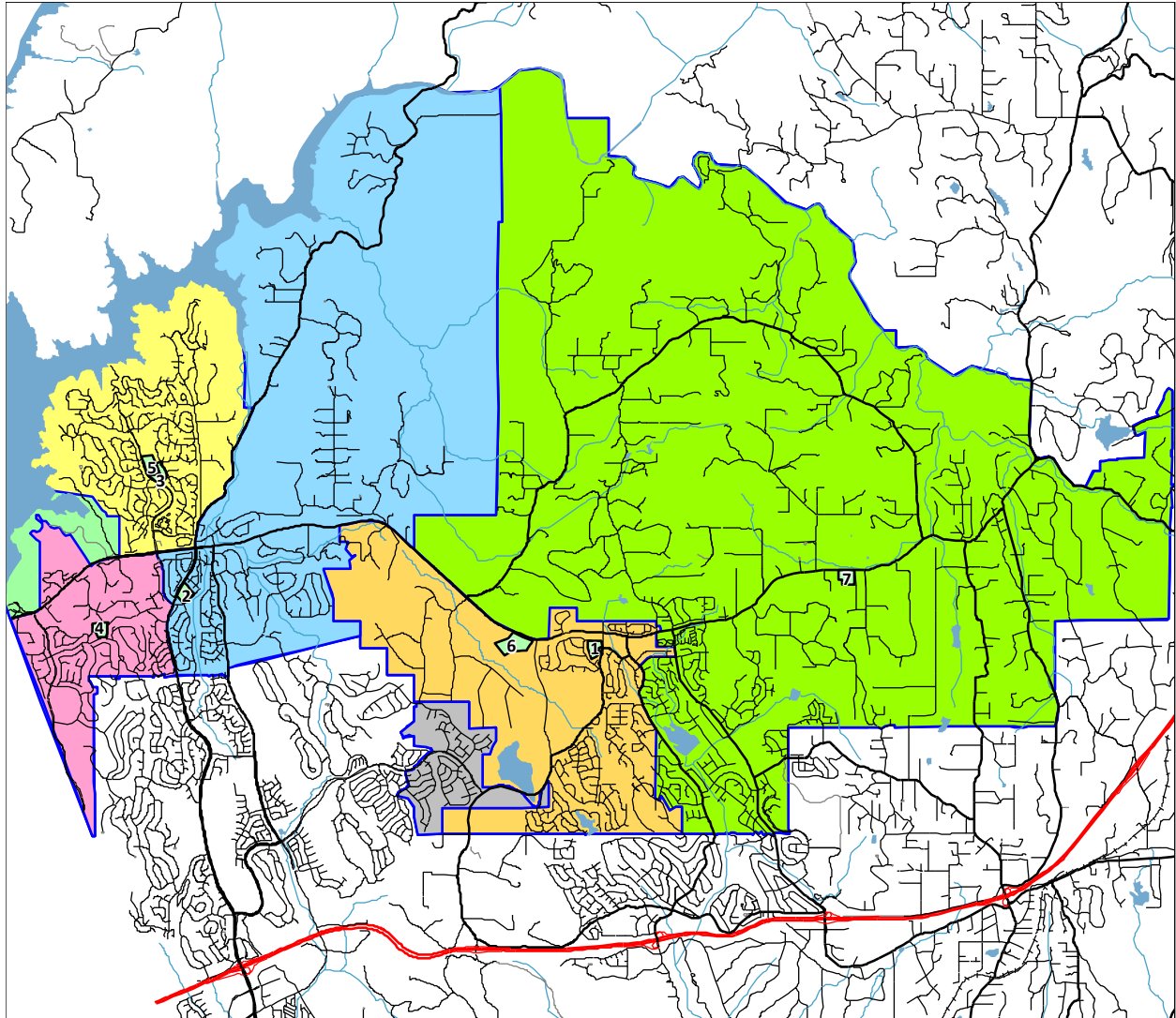
K-57D

K-57D

# Rescue Union School District

## 2022/23 Demographics and Enrollment Projections

### School Locations and Elementary Boundaries



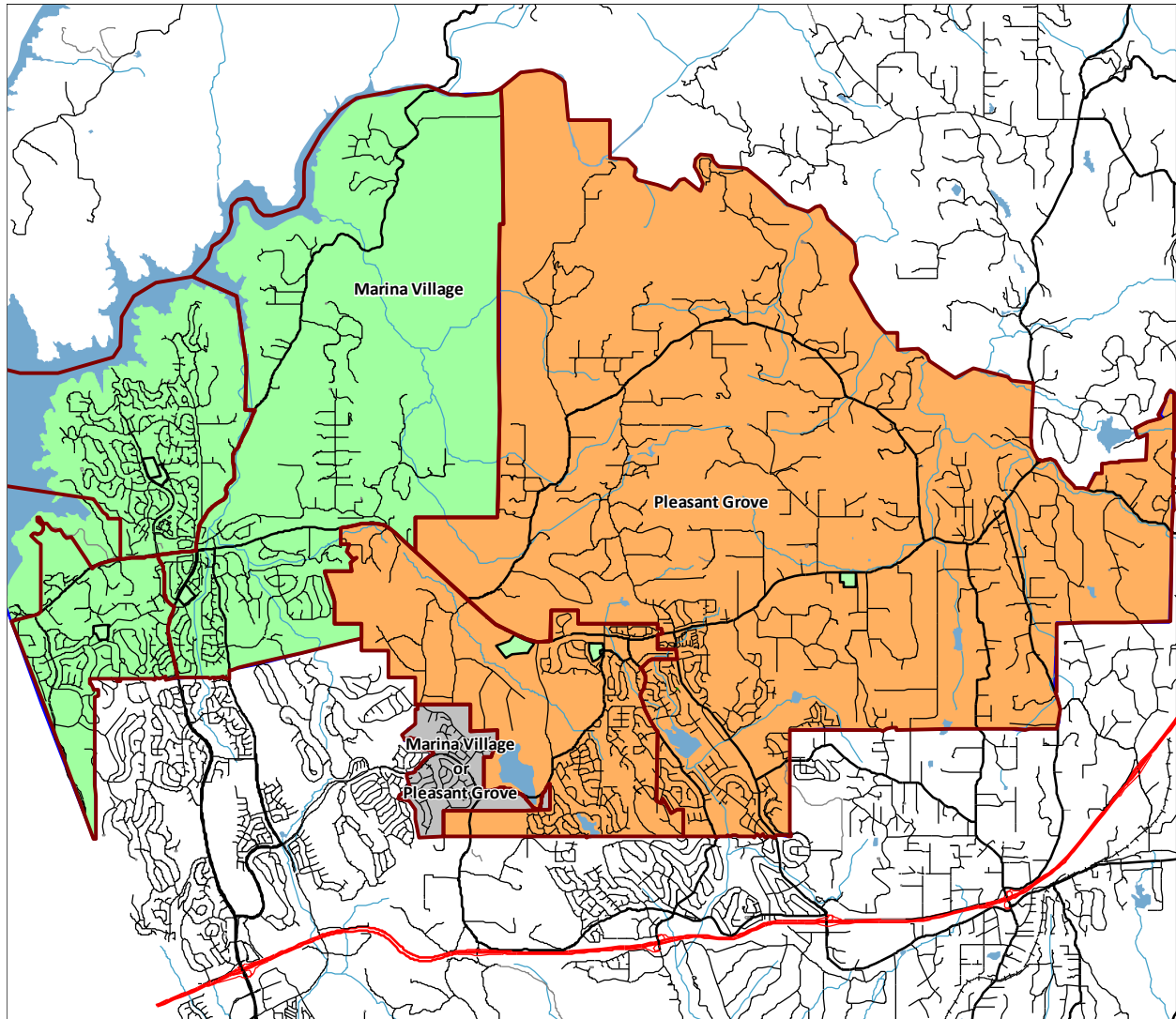
<u>Id</u>	<u>School</u>	<u>Grades</u>	<u>Id</u>	<u>School</u>	<u>Grades</u>
1	Green Valley Elementary	TK-5	5	Marina Village Middle	6-8
2	Jackson Elementary	TK-5	6	Pleasant Grove Middle	6-8
3	Lake Forest Elementary	TK-5	7	Rescue Elementary	TK-5
4	Lakeview Elementary	TK-5			

DRAFT

# Rescue Union School District

## 2022/23 Demographics and Enrollment Projections

### Middle School Boundaries and Elementary Feeders



#### Middle School

Marina Village

#### Elementary Feeders

Jackson  
Lake Forest  
Lakeview

#### Middle School

Pleasant Grove

#### Elementary Feeders

Green Valley  
Rescue

DRAFT

# Rescue Union School District

## 2022/23 Demographics and Enrollment Projections

### Enrollment Projection Summary by Grade

The chart below shows three years of historic enrollment, the current enrollment, and six years of projected enrollment by grade.

Rescue Union School District Enrollment Projection Summary by Grade										
Grade	Historic Enrollment			Current Enrollment	Projected Enrollment					
	<u>19/20</u>	<u>20/21</u>	<u>21/22</u>	<u>22/23</u>	<u>23/24</u>	<u>24/25</u>	<u>25/26</u>	<u>26/27</u>	<u>27/28</u>	<u>28/29</u>
TK	93	87	83	92	174	215	285	284	283	283
K	339	318	359	326	350	343	332	331	330	329
1	374	330	356	389	340	363	356	345	345	345
2	355	367	371	367	413	363	386	379	369	369
3	370	351	373	376	371	417	367	390	384	374
4	371	381	381	382	379	373	419	370	393	388
5	387	380	415	377	384	381	375	421	373	396
6	401	379	378	420	384	390	388	382	428	379
7	453	400	408	368	424	389	395	393	388	434
8	460	429	439	386	353	407	372	378	377	372
<b>Total TK-5</b>	<b>2,289</b>	<b>2,214</b>	<b>2,338</b>	<b>2,309</b>	<b>2,411</b>	<b>2,455</b>	<b>2,520</b>	<b>2,520</b>	<b>2,477</b>	<b>2,484</b>
<b>Total 6-8</b>	<b>1,314</b>	<b>1,208</b>	<b>1,225</b>	<b>1,174</b>	<b>1,161</b>	<b>1,186</b>	<b>1,155</b>	<b>1,153</b>	<b>1,193</b>	<b>1,185</b>
<b>District Totals</b>	<b>3,603</b>	<b>3,422</b>	<b>3,563</b>	<b>3,483</b>	<b>3,572</b>	<b>3,641</b>	<b>3,675</b>	<b>3,673</b>	<b>3,670</b>	<b>3,669</b>

### Enrollment Projection Summary by School

Rescue Union School District Enrollment Projection Summary by School							
School	Current Enrollment						
	<u>22/23</u>	<u>23/24</u>	<u>24/25</u>	<u>25/26</u>	<u>26/27</u>	<u>27/28</u>	<u>28/29</u>
Green Valley Elem	350	384	416	435	441	442	460
Jackson Elem	460	465	469	485	483	475	473
Lake Forest Elem	456	471	470	458	448	428	415
Lakeview Elem	543	561	567	576	574	572	577
Rescue Elem	502	530	533	566	574	560	559
<b>Elementary Totals</b>	<b>2,311</b>	<b>2,411</b>	<b>2,455</b>	<b>2,520</b>	<b>2,520</b>	<b>2,477</b>	<b>2,484</b>
Marina Village Middle	665	656	668	650	650	655	632
Pleasant Grove Middle	507	505	518	505	503	538	553
<b>Middle Totals</b>	<b>1,172</b>	<b>1,161</b>	<b>1,186</b>	<b>1,155</b>	<b>1,153</b>	<b>1,193</b>	<b>1,185</b>
<b>District Totals</b>	<b>3,483</b>	<b>3,572</b>	<b>3,641</b>	<b>3,675</b>	<b>3,673</b>	<b>3,670</b>	<b>3,669</b>
Annual Change		89	69	34	-2	-3	-1

DRAFT